



Western Michigan University
ScholarWorks at WMU

Legacy Scout Tickets from Pure Oil Company

8-20-2021

MGRRE_PureOilScoutTickets_Michigan Gas Storage Co aka Consumers Power Co _236_21035128180000

MGRRE

Western Michigan University

Follow this and additional works at: <https://scholarworks.wmich.edu/pure>



Part of the Geology Commons

WMU ScholarWorks Citation

MGRRE, "MGRRE_PureOilScoutTickets_Michigan Gas Storage Co aka Consumers Power Co _236_21035128180000" (2021). *Legacy Scout Tickets from Pure Oil Company*. 1571.
<https://scholarworks.wmich.edu/pure/1571>

This Document is brought to you for free and open access via ScholarWorks at WMU. It has been accepted for inclusion in Legacy Scout Tickets from Pure Oil Company by an authorized administrator of ScholarWorks at WMU. See the National Digital Catalogue - Science Base Catalogue for more collections submitted by MGRRE.



**MGRRE_PureOilScoutTickets_Michigan Gas Storage Co aka Consumers Power
Co _236_21035128180000**

API 21035128180000

Permit Number 12818

Lease Name Michigan Gas Storage Co aka Consumers Power Co

Well Number 236

County Clare

Township 20N

Range 06W

Section 32

2021 DEQ or Pure co_name Consumers Energy Company

Pure Number 686

Latitude 44.0828453

Longitude -85.0558387

T
P
A

THE PURE OIL COMPANY LOCATION REPORT

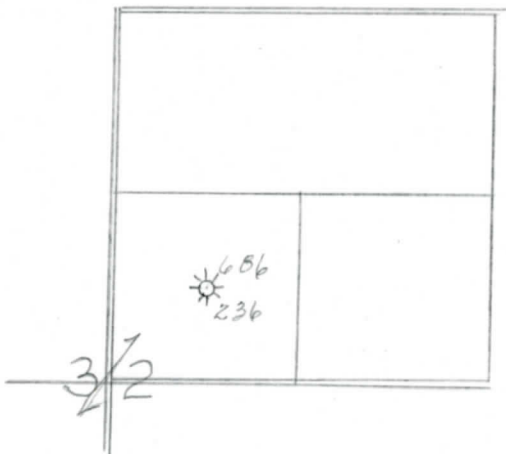
Date December 4, 1946 A.F.E. No. _____
 Division Mich. Producing District _____ Lease Consumers Power Co.
Consumers Power Company
 Acres _____ Lease No. _____ Elevation _____ Well No. 236 (Serial No. 686)
 Quadrangle C SW NE Sec. 32 Twp. 20 N Rge. 6 W YORK DIST. Twp. Winterfield
 Survey _____ County Clare State Michigan
 Operator Consumers Power Co. Map Winterfield Township, Clare County

Feet from North Line of Lease	
_____	" " East " " "
<u>660</u>	<u>660</u> " " South " " "
<u>660</u>	" " West " " "
Feet from North Line of Section	
_____	" " East " " "
<u>660</u>	<u>660</u> " " South " " <u>1/4</u>
<u>660</u>	" " West " " "

LEGEND

- Location
- ☀ Gas Well
- Oil Well
- ☀ Gas - Distillate Well
- ∅ or ○ Dry Hole
- Dry Showing Oil
- ☀ Dry Showing Gas
- ⊗ Abandoned Location
- ☀ or ☀ Abandoned Gas Well
- or ● Abandoned Oil Well
- or ○ Input Well

Low



Scale _____

Remarks: _____

Submitted by CB Civil Engineer Approved by _____ Division Manager
 Approved by _____ Vice-President - General Manager