



Western Michigan University
ScholarWorks at WMU

Legacy Scout Tickets from Pure Oil Company

8-20-2021

MGRRE_PureOilScoutTickets_Michigan Gas Storage Co aka Consumers Power Co _241_21035128230000

MGRRE

Western Michigan University

Follow this and additional works at: <https://scholarworks.wmich.edu/pure>



Part of the Geology Commons

WMU ScholarWorks Citation

MGRRE, "MGRRE_PureOilScoutTickets_Michigan Gas Storage Co aka Consumers Power Co _241_21035128230000" (2021). *Legacy Scout Tickets from Pure Oil Company*. 1576.
<https://scholarworks.wmich.edu/pure/1576>

This Document is brought to you for free and open access via ScholarWorks at WMU. It has been accepted for inclusion in Legacy Scout Tickets from Pure Oil Company by an authorized administrator of ScholarWorks at WMU. See the National Digital Catalogue - Science Base Catalogue for more collections submitted by MGRRE.



**MGRRE_PureOilScoutTickets_Michigan Gas Storage Co aka Consumers Power
Co _241_21035128230000**

API 21035128230000

Permit Number 12823

Lease Name Michigan Gas Storage Co aka Consumers Power Co

Well Number 241

County Clare

Township 20N

Range 06W

Section 20

2021 DEQ or Pure co_name Consumers Energy Company

Pure Number 691

Latitude 44.1118152

Longitude -85.0555863

THE PURE OIL COMPANY

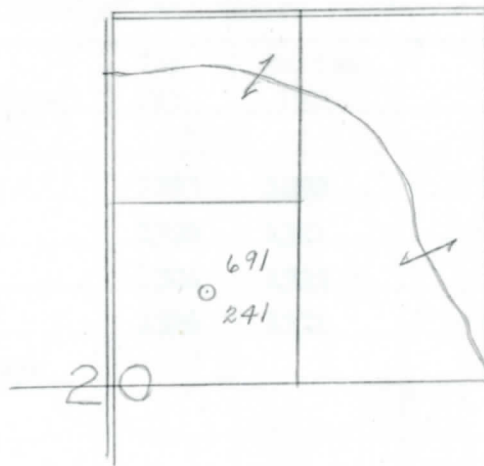
LOCATION REPORT

Date December 4, 1946 A.F.E. No. _____
 Division Mich. Producing District _____ Lease Consumers Power Co.
Consumers Power Company
 Acres _____ Lease No. _____ Elevation _____ Well No. 241 (Serial No. 691)
 Quadrangle C SW NE Sec. 20 Twp. 20 N Rge. 6 W Twp. Winterfield
 Survey _____ County Clare State Michigan
 Operator Consumers Power Co. Map Winterfield Township, Clare County

Feet from North Line of Lease	
660	660
660	660
Feet from North Line of Section	
660	660
660	660

LEGEND

- Location
- ☀ Gas Well
- Oil Well
- ☀ Gas - Distillate Well
- ⊘ or ○ Dry Hole
- or ○ Dry Showing Oil
- ☀ Dry Showing Gas
- ⊘ Abandoned Location
- ☀ or ☀ Abandoned Gas Well
- or ● Abandoned Oil Well
- or ○ Input Well



Remarks: _____

Scale _____

Submitted by CB Civil Engineer Approved by _____ Division Manager
 Approved by _____ Vice-President - General Manager

COMPLETION RECORD OF WELLS DRILLED BY OTHER OPERATORS

Michigan Producing DIVISION

Date December 31, 1946 No. 691
 State Mich. Co. Clare ~~Block~~ Twp. Winterfield Sec. 20 Twp. 20 N Rge. 6 W
 Well No. 241 Serial No. 691 Farm Fee Acres _____
 Operator Consumers Power Company
 Date started 12-5-46 Date completed 12-27-46 Elevation 1074.4

PRODUCTION RECORD

1st 24 hours natural 15,500,000 Cu. Ft.
 Date of shot _____ No. of quarts _____ From _____ To _____ From _____ To _____
 Date of acid _____ No. of gallons shot _____
 1st 24 hours after acid _____
 Completed as: Oil Well _____ Gas Well X Dry Hole _____

FORMATION AND CASING RECORD

Formation	Top	Bottom	Top Pay	Bottom Pay	Remarks	Casing	
						Size	Set at
Brown Dolomite	1145	(-71)				13-3/8"	215
Mich. Stray	1281	(-207)	1293	1298	(-219)	8-5/8"	1278
			1320	1321	(-246)		
			1324	1325	(-250)		
			1326	1331	(-252)		
Total Depth		1331	(-257)				

Remarks _____

Signed Harry J. Gaspeny