



Western Michigan University  
ScholarWorks at WMU

---

Legacy Scout Tickets from Pure Oil Company

---

8-20-2021

**MGRRE\_PureOilScoutTickets\_Douglass &  
Hilliard\_1\_21035128590000**

MGRRE  
*Western Michigan University*

Follow this and additional works at: <https://scholarworks.wmich.edu/pure>



Part of the Geology Commons

---

#### WMU ScholarWorks Citation

MGRRE, "MGRRE\_PureOilScoutTickets\_Douglass & Hilliard\_1\_21035128590000" (2021). *Legacy Scout Tickets from Pure Oil Company*. 1578.  
<https://scholarworks.wmich.edu/pure/1578>

This Document is brought to you for free and open access via ScholarWorks at WMU. It has been accepted for inclusion in Legacy Scout Tickets from Pure Oil Company by an authorized administrator of ScholarWorks at WMU. See the National Digital Catalogue - Science Base Catalogue for more collections submitted by MGRRE.



---

**MGRRE\_PureOilScoutTickets\_Douglass & Hilliard\_1\_21035128590000**

API 21035128590000

Permit Number 12859

Lease Name Douglass & Hilliard

Well Number 1

County Clare

Township 20N

Range 03W

Section 24

2021 DEQ or Pure co\_name Hilliard, E. V. Estate

Pure Number 693

Latitude 44.10803

Longitude -84.61315

# THE PURE OIL COMPANY

## LOCATION REPORT

Date Dec. 18, 1946 A.F.E. No. \_\_\_\_\_  
 Division Mich. Producing District \_\_\_\_\_ Lease Douglass-Hilliard  
 Acres \_\_\_\_\_ Lease No. \_\_\_\_\_ Elevation \_\_\_\_\_ Well No. 1 (Serial No. 693\*)  
 Quadrangle C NE SW SE Sec. 24 Twp. 20 N Rge. 3 W Bk. 3 Twp. Franklin  
 Survey \_\_\_\_\_ County Clare State Michigan  
 Operator E. V. Hilliard Map Franklin Township, Clare County

<u>330</u>	<u>330</u>	Feet from North Line of Lease
<u>330</u>	<u>330</u>	" " East " " "
		" " South " " "
		" " West " " "
		Feet from North Line of Section
<u>990</u>	<u>990</u>	" " East " " "
<u>990</u>	<u>990</u>	" " South " " <u>1/4</u>
		" " West " " "

### LEGEND

○ Location

☼ Gas Well

● Oil Well

☼ Gas - Distillate Well

○ or ○ Dry Hole

● Dry Showing Oil

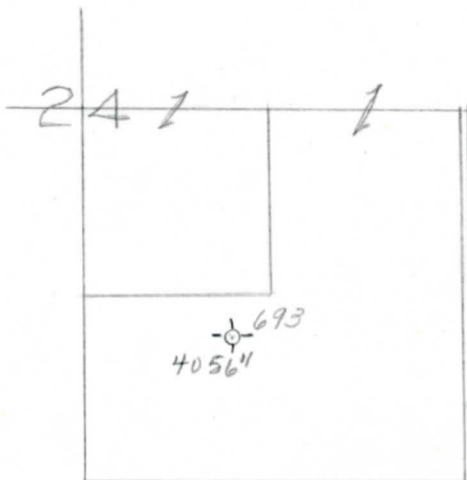
☼ Dry Showing Gas

○ Abandoned Location

☼ or ☼ Abandoned Gas Well

● or ● Abandoned Oil Well

● or ○ Input Well



N

Scale \_\_\_\_\_

Remarks: \_\_\_\_\_

Submitted by CB Civil Engineer

Approved by \_\_\_\_\_ Division Manager

Approved by \_\_\_\_\_ Vice-President - General Manager