



Western Michigan University  
ScholarWorks at WMU

---

Legacy Scout Tickets from Pure Oil Company

---

8-20-2021

## MGRRE\_PureOilScoutTickets\_Merle Nelis \_1\_unk

MGRRE

*Western Michigan University*

Follow this and additional works at: <https://scholarworks.wmich.edu/pure>



Part of the Geology Commons

---

### WMU ScholarWorks Citation

MGRRE, "MGRRE\_PureOilScoutTickets\_Merle Nelis \_1\_unk" (2021). *Legacy Scout Tickets from Pure Oil Company*. 1589.

<https://scholarworks.wmich.edu/pure/1589>

This Document is brought to you for free and open access via ScholarWorks at WMU. It has been accepted for inclusion in Legacy Scout Tickets from Pure Oil Company by an authorized administrator of ScholarWorks at WMU. See the National Digital Catalogue - Science Base Catalogue for more collections submitted by MGRRE.



---

**MGRRE\_PureOilScoutTickets\_Merle Nelis \_1\_unk**

API unk

Permit Number unk

Lease Name Merle Nelis

Well Number 1

County Crawford

Township 25N

Range 2W

Section 31

2021 DEQ or Pure co\_name Walker Bell Company ???

Pure Number 5

Latitude 44.5185348

Longitude -84.6006636

THE PURE OIL COMPANY

# LOCATION REPORT

DATE July - 24, 1925 7/24/35 No. 5  
 STATE Mich COUNTY Crawford DIST. South Branch SEC. 31 TOWN 25<sup>N</sup> RANGE 2<sup>W</sup>  
 STATE Michigan COUNTY Crawford DIST. South Branch SEC. 31 TOWN 25<sup>N</sup> RANGE 2<sup>W</sup>  
 WELL No. 1 (SERIAL No. 5) FARM Merle Nelis ACRES \_\_\_\_\_

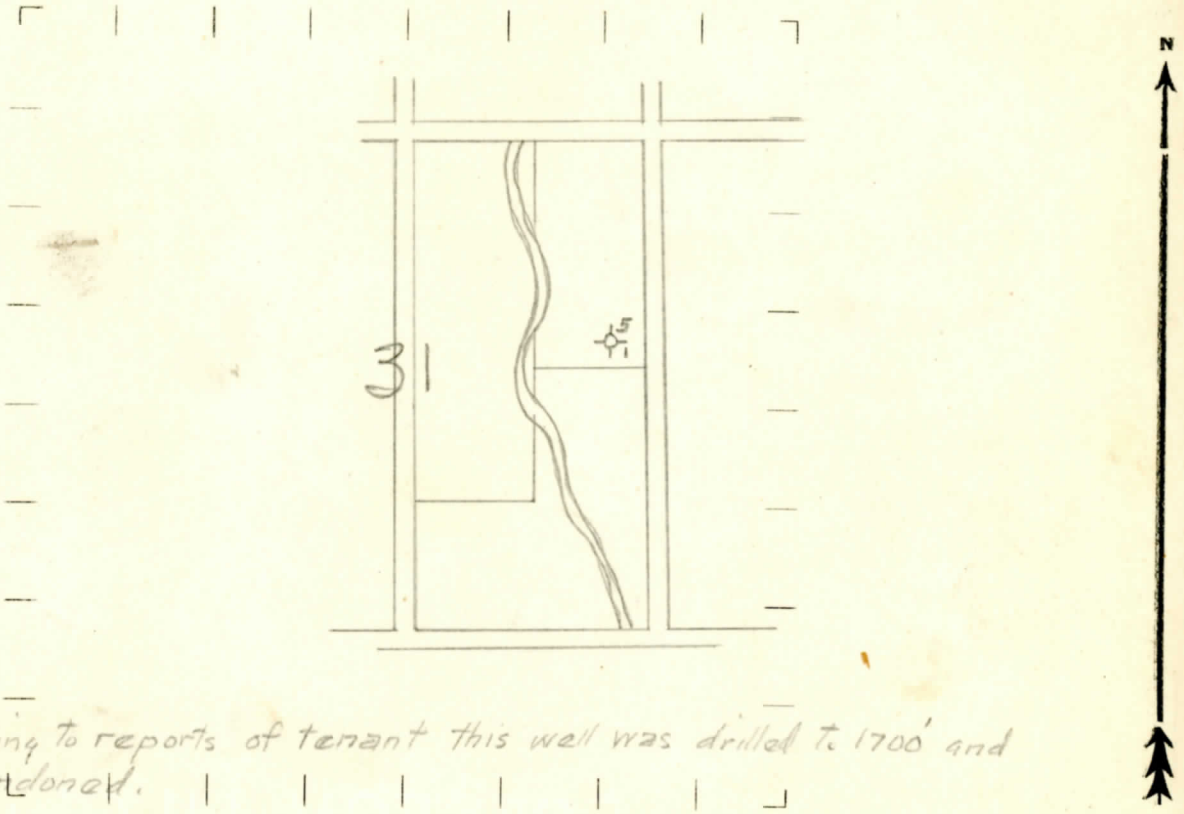
NAME OF STREAM OR WATERS \_\_\_\_\_ QUADRANGLE SE-SE-NE  
 OPERATOR Walker Bell Company MAP South Branch Twp - Crawford Co.  
South Branch Township, Crawford Co.

\_\_\_\_\_ Feet from North Line of Farm  
 \_\_\_\_\_ " " East " " "  
 \_\_\_\_\_ " " South " " "  
 \_\_\_\_\_ " " West " " "  
 \_\_\_\_\_ Feet from North Line of Section  
420 420 " " East " " "  
400 400 " " South " " "  
 \_\_\_\_\_ " " West " " "

### LEGEND

- LOCATION
- ⊕ RIG
- ⊕ DRILLING
- ☀ GAS WELL
- OIL WELL
- ⬮ SMALL OIL WELL
- ⊕ DRY HOLE
- ⊕ DRY SHOWING OIL
- ⊕ DRY SHOWING GAS
- ⊕ ABANDONED LOCATION
- ☀ ABANDONED GAS WELL
- ABANDONED OIL WELL

NOTE: Below make tracing from map, (when no map is obtainable make sketch) showing farm, center of section, this location with measurements and also wells, dry holes, or other locations in the vicinity of this location. Make copy to keep for reference and send original to the Columbus office.



According to reports of tenant this well was drilled to 1700' and abandoned.

REMARKS: According to reports of tenant, this well was drilled to 1700' and abandoned!

SIGNED R.L. Yeager  
 Sup't or Foreman.