



Western Michigan University  
ScholarWorks at WMU

---

Legacy Scout Tickets from Pure Oil Company

---

8-20-2021

**MGRRE\_PureOilScoutTickets\_WOODWORTH\_1\_21045018060000**

MGRRE

*Western Michigan University*

Follow this and additional works at: <https://scholarworks.wmich.edu/pure>



Part of the Geology Commons

---

#### **WMU ScholarWorks Citation**

MGRRE, "MGRRE\_PureOilScoutTickets\_WOODWORTH\_1\_21045018060000" (2021). *Legacy Scout Tickets from Pure Oil Company*. 1614.

<https://scholarworks.wmich.edu/pure/1614>

This Document is brought to you for free and open access via ScholarWorks at WMU. It has been accepted for inclusion in Legacy Scout Tickets from Pure Oil Company by an authorized administrator of ScholarWorks at WMU. See the National Digital Catalogue - Science Base Catalogue for more collections submitted by MGRRE.



---

**MGRRE\_PureOilScoutTickets\_WOODWORTH\_1\_21045018060000**

API 21045018060000

Permit Number 1806

Lease Name WOODWORTH

Well Number 1

County Eaton

Township 3N

Range 4W

Section 5

2021 DEQ or Pure co\_name BERNIER W J

Pure Number 17

Latitude 42.67213

Longitude -84.79913

DATE November 17, 1933 LOCATION REPORT No. 17

STATE Michigan COUNTY Eaton DIST. Benton SEC. 5 TOWN 3 N RANGE 4 W

WELL No. 1 (SERIAL No. 17) FARM H. A. & H. D. Woodworth ACRES \_\_\_\_\_

NAME OF STREAM OR WATERS \_\_\_\_\_ QUADRANGLE NE-SE-SE

OPERATOR W. J. Bernier MAP Benton Township, Eaton County

Feet from North Line of Farm

330 " " East " " "

990 " " South " " "

" " West " " "

Feet from North Line of Section

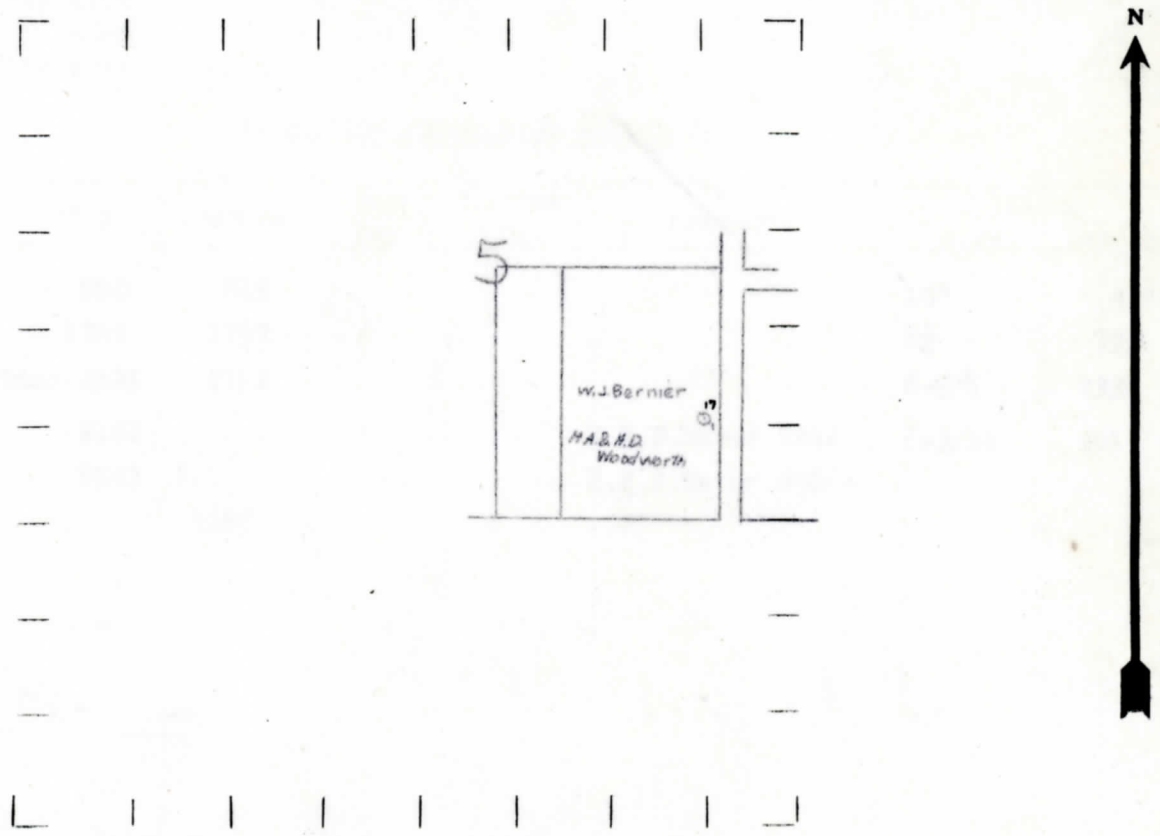
330 " " East " " "

990 " " South " " "

" " West " " "

- LEGEND**
- LOCATION
  - ① RIG
  - ⊕ DRILLING
  - ⊛ GAS WELL
  - OIL WELL
  - ⬮ SMALL OIL WELL
  - ⊛ DRY HOLE
  - ⊛ DRY SHOWING OIL
  - ⊛ DRY SHOWING GAS
  - ⊛ ABANDONED LOCATION
  - ⊛ ABANDONED GAS WELL
  - ⊛ ABANDONED OIL WELL

NOTE: Below make tracing from map, (when no map is obtainable make sketch) showing farm, center of section, this location with measurements and also wells, dry holes, or other locations in the vicinity of this location. Make copy to keep for reference and send original to Columbus office.



REMARKS: \_\_\_\_\_

\_\_\_\_\_

\_\_\_\_\_

SIGNED R. A. Yeager  
Superintendent or Foreman.

Michigan Producing Division

Date April 25, 1935 No. 17  
 State Michigan County Eaton Dist. \_\_\_\_\_  
 (Serial No.) \_\_\_\_\_ Twp. Benton Sec. 5 Twp. 2N Rge. 4W  
 Well No. 1 (County No.) 17 Farm H.A. & H.D. Woodworth Acres \_\_\_\_\_  
 Operator W. J. Bernier Information secured ~~from~~ Scouting Dept.  
 Date well started 12/6/33 Date well completed 4/20/35 Elevation 859.1'

PRODUCTION RECORD

1st 24 hours natural Dry Hole  
 2nd 24 hours natural \_\_\_\_\_  
 Date of shot \_\_\_\_\_ No. of quarts \_\_\_\_\_ From \_\_\_\_\_ to \_\_\_\_\_ From \_\_\_\_\_ to \_\_\_\_\_  
 Date of acid \_\_\_\_\_ No. of gallons \_\_\_\_\_  
 1st 24 hours after acid shot \_\_\_\_\_  
 2nd 24 hours after acid shot \_\_\_\_\_

FORMATION AND CASING RECORD

Formation	Top	Bottom	Top Pay	Bottom Pay	Remarks	Casing	
						Size	Set at
Marshall	502	815				10"	45'
Red Rock	1784	1792				8 1/4"	793
Traverse Formation	2125	2152				6-5/8"	2338
" Lime	2152				H.F.S. Water 2262'	5-3/16"	2615
Dundee	2503	?			H.F.S. Water 2566'		
Total Depth		3085					

Remarks Show Oil 2822-2832'  
" " 2875-2880'

Signed W.H. Bell