



Western Michigan University
ScholarWorks at WMU

Legacy Scout Tickets from Pure Oil Company

8-20-2021

MGRRE_PureOilScoutTickets_Freiheit, Fred_1_None

MGRRE

Western Michigan University

Follow this and additional works at: <https://scholarworks.wmich.edu/pure>



Part of the Geology Commons

WMU ScholarWorks Citation

MGRRE, "MGRRE_PureOilScoutTickets_Freiheit, Fred_1_None" (2021). *Legacy Scout Tickets from Pure Oil Company*. 1615.

<https://scholarworks.wmich.edu/pure/1615>

This Document is brought to you for free and open access via ScholarWorks at WMU. It has been accepted for inclusion in Legacy Scout Tickets from Pure Oil Company by an authorized administrator of ScholarWorks at WMU. See the National Digital Catalogue - Science Base Catalogue for more collections submitted by MGRRE.



MGRRE_PureOilScoutTickets_Freiheit, Fred_1_None

API None

Permit Number None

Lease Name Freiheit, Fred

Well Number 1

County Eaton

Township 03N

Range 04W

Section 26

2021 DEQ or Pure co_name Mr. Melhorn

Pure Number 18

Latitude 42.6183978

Longitude -84.7486746

THE PURE OIL COMPANY

DATE December 10, 1935

Completion
COMPLETION
Eaton

LOCATION REPORT

COMPLETION

No. 18

STATE Michigan COUNTY Eaton

DIST. Benton
TWP. Benton

SEC. 26 TOWN 3N RANGE 4W

WELL No. 1 (SERIAL No. 18) FARM

PREC. Fred Friechie (CORE TEST) Test. ACRES

NAME OF STREAM OR WATERS

QUADRANGLE SW-SW-SE

OPERATOR Melhorn

Map Benton Township, Eaton County
Benton Twp. - Eaton Co.

Feet from North Line of Farm

" " East " " "

" " South " " "

" " West " " "

Feet from North Line of Section

" " East " " "

" " South " " "

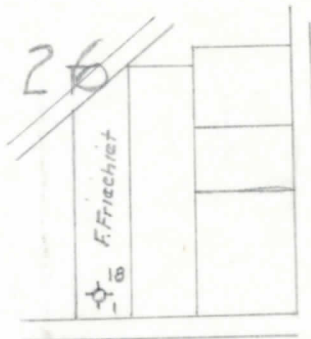
" " West " " "

LEGEND

- LOCATION
- ⊙ RIG
- ⊕ DRILLING
- ☼ GAS WELL
- OIL WELL
- ⬮ SMALL OIL WELL
- ⊖ DRY HOLE
- ⬮ DRY SHOWING OIL
- ⊖ DRY SHOWING GAS
- ⊖ ABANDONED LOCATION
- ☼ ABANDONED GAS WELL
- ⬮ ABANDONED OIL WELL

NOTE: Below make tracing from map, (when no map is obtainable make sketch) showing farm, center of section, this location with measurements and also wells, dry holes, or other locations in the vicinity of this location.

Top Parma 275'
" Marshall 425'
T.D. 460' Marshall
Total Depth 460' (Marshall)



REMARKS:

SIGNED

R. L. Yeager

Superintendent or Foreman.