



Western Michigan University
ScholarWorks at WMU

Legacy Scout Tickets from Pure Oil Company

8-20-2021

**MGRRE_PureOilScoutTickets_ZUBER,
MARTIN_1_21045126040000**

MGRRE
Western Michigan University

Follow this and additional works at: <https://scholarworks.wmich.edu/pure>



Part of the Geology Commons

WMU ScholarWorks Citation

MGRRE, "MGRRE_PureOilScoutTickets_ZUBER, MARTIN_1_21045126040000" (2021). *Legacy Scout Tickets from Pure Oil Company*. 1620.
<https://scholarworks.wmich.edu/pure/1620>

This Document is brought to you for free and open access via ScholarWorks at WMU. It has been accepted for inclusion in Legacy Scout Tickets from Pure Oil Company by an authorized administrator of ScholarWorks at WMU. See the National Digital Catalogue - Science Base Catalogue for more collections submitted by MGRRE.



MGRRE_PureOilScoutTickets_ZUBER, MARTIN_1_21045126040000

API 21045126040000

Permit Number 12604

Lease Name ZUBER, MARTIN

Well Number 1

County Eaton

Township 2N

Range 3W

Section 8

2021 DEQ or Pure co_name FISHER MCCALL OIL AND GAS INC

Pure Number 27

Latitude 42.57913

Longitude -84.69667

THE PURE OIL COMPANY
COMPLETION RECORD OF WELLS DRILLED BY OTHER OPERATORS
THE PURE OIL COMPANY

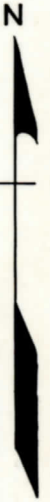
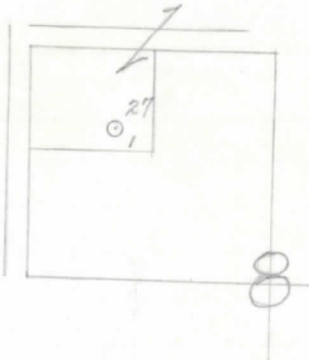
Date September 18, 1946 LOCATION REPORT A.F.E. No. Martin Zuber
 Division Mich. Producing District _____ Lease Martin Zuber
 Acres _____ Lease No. _____ Elevation _____ Well No. 1 (Serial No. 27)
 Quadrangle SE-NW-NW Sec. 8 Twp. 2 N Rge. 3 W ~~XBRG~~ ~~XBRG~~ Eaton Rapids
 Survey _____ County Eaton State Michigan
 Operator Fisher-McCall Oil & Gas, Inc. Map Eaton Rapids Township, Eaton County

		Feet from North Line of Lease
<u>330</u>	<u>330</u>	" " East " " "
<u>330</u>	<u>330</u>	" " South " " "
		" " West " " "
<u>990</u>	<u>990</u>	Feet from North Line of Section
		" " East " " "
		" " South " " "
<u>990</u>	<u>990</u>	" " West " " "

LEGEND

- Location
- ☀ Gas Well
- Oil Well
- ☀ Gas - Distillate Well
- or ○ Dry Hole
- Dry Showing Oil
- ☀ Dry Showing Gas
- ⊗ Abandoned Location
- ☀ or ☀ Abandoned Gas Well
- or ● Abandoned Oil Well
- or ○ Input Well

Handwritten notes:
 64
 9-12-46
 10-28-64



Scale _____

Remarks: _____

Submitted by CB Civil Engineer Approved by _____ Division Manager
 Approved by _____ Vice-President - General Manager

DIVISION

Michigan Producing

Date November 13, 1946 No. 27
 State Mich. Co. Eaton Dist. Eaton Rapids Sec. 8 Twp. 2 N Rge. 3 W
 Well No. 1 Serial No. 27 Farm Martin Zuber Acres _____
 Operator Fisher-McCall Oil & Gas Co., Inc.
 Date started 9-12-46 Date completed 10-31-46 Elevation 877.4

PRODUCTION RECORD

1st 24 hours natural
 Date of shot _____ No. of quarts _____ From _____ To _____
 Date of acid _____ No. of gallons shot _____
 1st 24 hours after acid _____
 Completed as: Oil Well _____ Gas Well _____ Dry Hole X

FORMATION AND CASING RECORD

Formation	Top	Bottom	Top Pay	Bottom Pay	Remarks	Casing	
						Size	Set at
Brown Dolomite	430	(+447)				10"	69
Marshall	445	749	(+432)			8-1/4"	854
Coldw. Red Rock	1770	1784	(-893)			5-3/16"	2375
Sunbury	1803	1825	(-926)				
Berea	1825	(-948)					
Antrim	1854	(-977)					
Traverse Form. Chert	2183	(-1306)					
Traverse Lime	2202	(-1325)					
Detroit River	2220	(-1343)			Salt wtr. 2208.	(-1331)	
	2486	(-1609)			Water (400 ft. in 2 hrs.) 2495-2499.	(-1618)	
Total Depth		2507	(-1630)				

Remarks Flowing fresh water 64 to 74 - top Michigan Series 350. 2195' CTM equals 2193' SLM. (+813) (+527)

Signed Harry J. Gaspeny