



Legacy Scout Tickets from Pure Oil Company

8-20-2021

**MGRRE_PureOilScoutTickets_BARNEY, FRED
L._1_21047041280000**

MGRRE
Western Michigan University

Follow this and additional works at: <https://scholarworks.wmich.edu/pure>



Part of the Geology Commons

WMU ScholarWorks Citation

MGRRE, "MGRRE_PureOilScoutTickets_BARNEY, FRED L._1_21047041280000" (2021). *Legacy Scout Tickets from Pure Oil Company*. 1623.
<https://scholarworks.wmich.edu/pure/1623>

This Document is brought to you for free and open access via ScholarWorks at WMU. It has been accepted for inclusion in Legacy Scout Tickets from Pure Oil Company by an authorized administrator of ScholarWorks at WMU. See the National Digital Catalogue - Science Base Catalogue for more collections submitted by MGRRE.



MGRRE_PureOilScoutTickets_BARNEY, FRED L._1_21047041280000

API 21047041280000

Permit Number 4128

Lease Name BARNEY, FRED L.

Well Number 1

County Emmet

Township 35N

Range 4W

Section 12

2021 DEQ or Pure co_name EMMET Cheboygan OIL AND GAS CO

Pure Number 6

Latitude 45.44096

Longitude -84.73898

The Pure Oil Company
THE PURE OIL COMPANY

CONFIRMATION RECORD OTHER OPERATORS

DATE May 13, 1937

LOCATION REPORT

No. 6

STATE Michigan COUNTY Emmet

DIST. Littlefield TWP. Littlefield SEC. 12

TOWN 35 N RANGE 4 W ACRES

WELL No. 1 (SERIAL No. 66) FARM

PREC. Fred L. Barney

NAME OF STREAM OR WATERS _____ QUADRANGLE NW-NW-SE
NW NW SE

OPERATOR Emmet - Cheboygan Oil & Gas Company
Emmet Cheboygan Oil & Gas Co.

Map Littlefield Township, Emmet County
Littlefield - Emmet

330 330 Feet from North Line of Farm

" " East " " "

" " South " " "

330 330 " " West " " "

330 330 Feet from North Line of Section

" " East " " "

" " South " " "

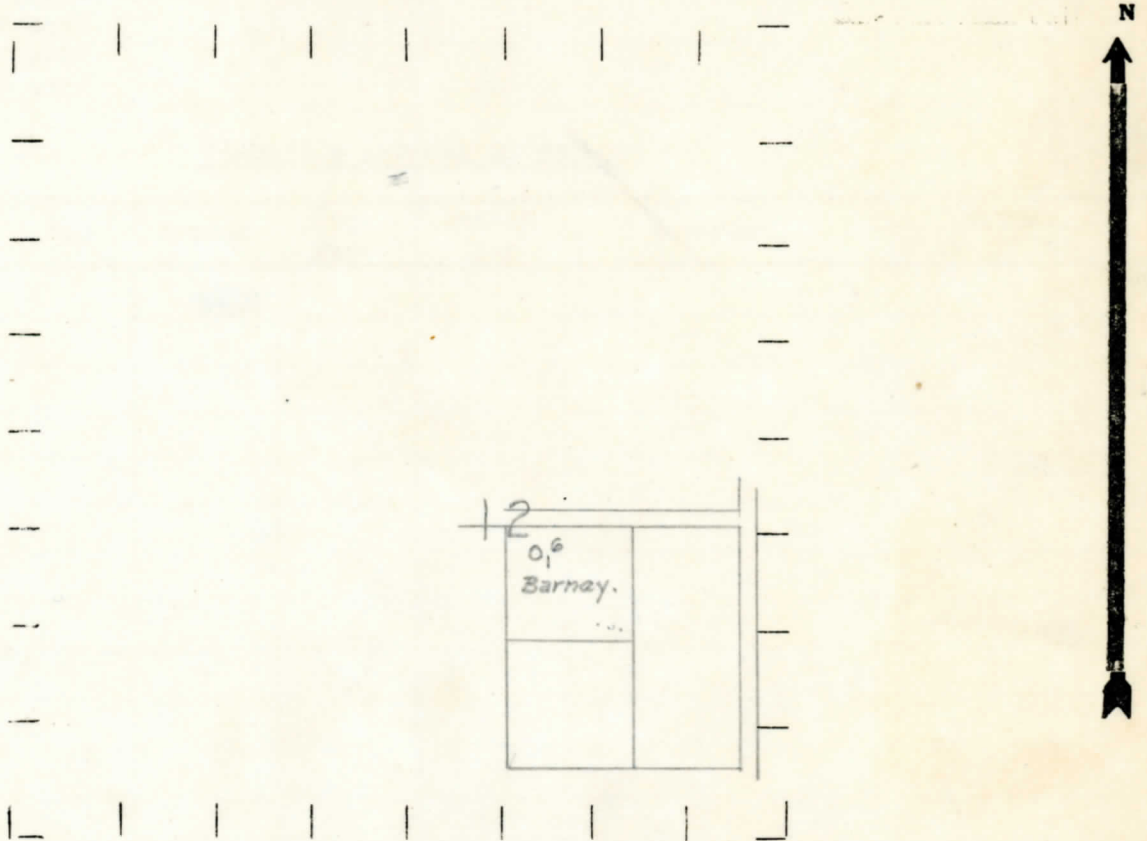
330 330 " " West 1/4 "

LEGEND

- LOCATION
- ⊙ RIG
- ⊕ DRILLING
- ☀ GAS WELL
- OIL WELL
- SMALL OIL WELL

- ⊙ DRY HOLE
- ⊙ DRY SHOWING OIL
- ⊙ DRY SHOWING GAS
- ⊙ ABANDONED LOCATION
- ☀ ABANDONED GAS WELL
- ABANDONED OIL WELL

NOTE: Below make tracing from map, (when no map is obtainable make sketch) showing farm, center of section, this location with measurements and also wells, dry holes, or other locations in the vicinity of this location.



REMARKS:

SIGNED

R. L. Yenga
Superintendent or Foreman.

