



Western Michigan University
ScholarWorks at WMU

Legacy Scout Tickets from Pure Oil Company

8-20-2021

**MGRRE_PureOilScoutTickets_MCPHEE,
JOHN_1_21047043760000**

MGRRE
Western Michigan University

Follow this and additional works at: <https://scholarworks.wmich.edu/pure>



Part of the Geology Commons

WMU ScholarWorks Citation

MGRRE, "MGRRE_PureOilScoutTickets_MCPHEE, JOHN_1_21047043760000" (2021). *Legacy Scout Tickets from Pure Oil Company*. 1624.
<https://scholarworks.wmich.edu/pure/1624>

This Document is brought to you for free and open access via ScholarWorks at WMU. It has been accepted for inclusion in Legacy Scout Tickets from Pure Oil Company by an authorized administrator of ScholarWorks at WMU. See the National Digital Catalogue - Science Base Catalogue for more collections submitted by MGRRE.



MGRRE_PureOilScoutTickets_MCPHEE, JOHN_1_21047043760000

API 21047043760000

Permit Number 4376

Lease Name MCPHEE, JOHN

Well Number 1

County Emmet

Township 35N

Range 4W

Section 15

2021 DEQ or Pure co_name EMMET Cheboygan OIL AND GAS CO

Pure Number 7

Latitude 45.42079

Longitude -84.77261

THE PURE OIL COMPANY

COMPLETION RECORD OF WELLS DRILLED BY OTHER OPERATORS

DATE August 5, 1937

LOCATION REPORT

No. 7

STATE Michigan COUNTY Emmet DIST. Littlefield TWP. Littlefield SEC. 15 TOWN 35 N RANGE 4 W

WELL No. 1 (SERIAL No. 7) FARM John McPhee ACRES

NAME OF STREAM OR WATERS QUADRANGLE SE SE SE

OPERATOR Emmet-Cheboygan Oil & Gas Company Map Littlefield Township, Emmet County

Feet from North Line of Farm

330 330 " " East " " "

330 330 " " South " " "

" " West " " "

Feet from North Line of Section

330 330 " " East " " "

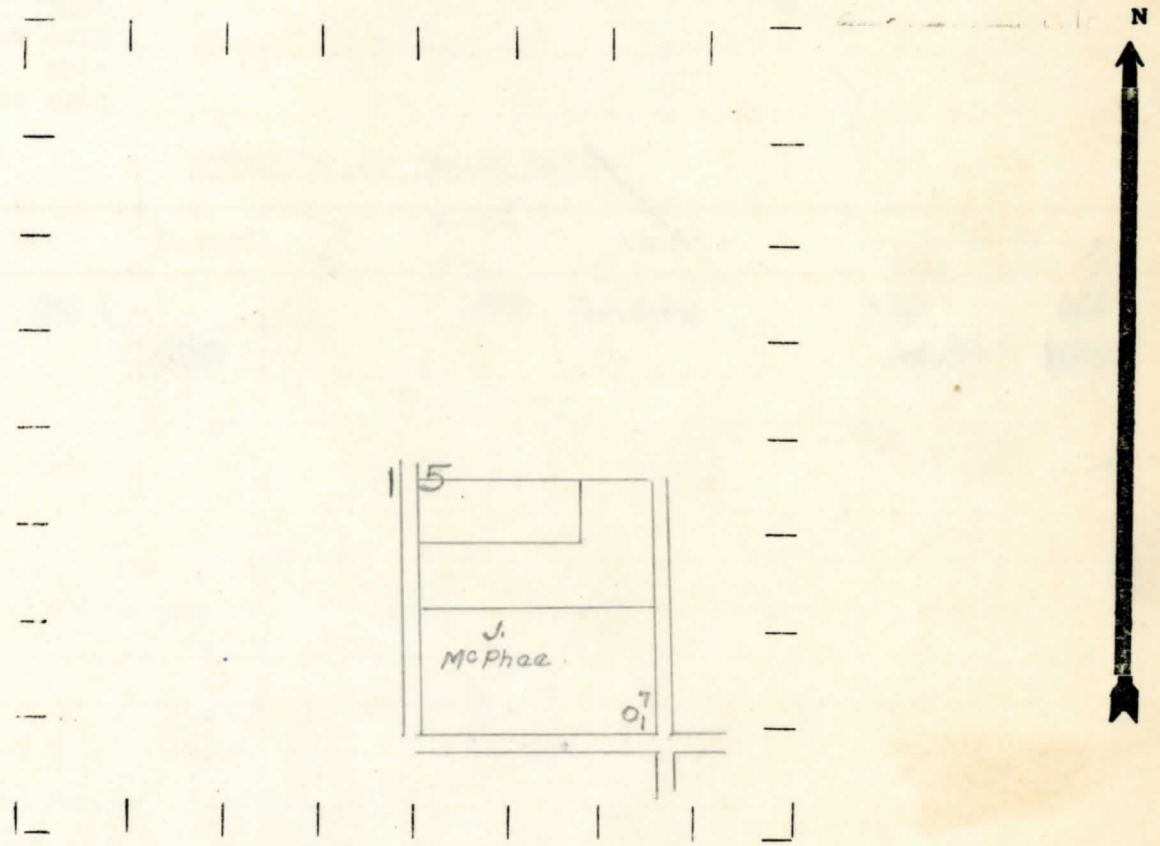
330 330 " " South " " "

" " West " " "

LEGEND

- LOCATION
- ⊙ RIG
- ⊕ DRILLING
- ☀ GAS WELL
- OIL WELL
- ⦿ SMALL OIL WELL
- ⊗ DRY HOLE
- ◆ DRY SHOWING OIL
- ⊗ DRY SHOWING GAS
- ⊗ ABANDONED LOCATION
- ☀ ABANDONED GAS WELL
- ⦿ ABANDONED OIL WELL

NOTE: Below make tracing from map, (when no map is obtainable make sketch) showing farm, center of section, this location with measurements and also wells, dry holes, or other locations in the vicinity of this location.



REMARKS:

SIGNED

Superintendent or Foreman.

Michigan Producing Division

Date **July 7, 1938** No. **7**
 State **Mich.** County **Emet** ~~XXXXX~~ Twp. **Littlefield** Sec. **15** Twp. **35 N** Rge. **4 W**
 (Serial No.)
 Well No. **1** (~~XXXXXX~~) **7** Farm **John McPhee** Acres
 Operator **Emet-Cheboygan Oil & Gas Co.** Information secured ~~XXXXX~~ By **Scouting Department**
 Date well started **8-5-37** Date well completed **10-13-37** Elevation **645.7**

PRODUCTION RECORD

1st 24 hours natural **Dry Hole - temporarily abandoned.**
 2nd 24 hours natural
 Date of shot No. of quarts From to From to
 Date of acid No. of gallons shot
 1st 24 hours after acid shot
 2nd 24 hours after acid shot

FORMATION AND CASING RECORD

Formation	Top	Bottom	Top Pay	Bottom Pay	Remarks	Casing	
						Size	Set at
Dundee	512 ?			524	H.F.S.W.	10"	449
Total Depth		1160				6-5/8"	1050

Remarks

Signed **D. C. Shackelford**