



Western Michigan University
ScholarWorks at WMU

Legacy Scout Tickets from Pure Oil Company

8-20-2021

MGRRE_PureOilScoutTickets_BEGOLE_1_21049019430000

MGRRE

Western Michigan University

Follow this and additional works at: <https://scholarworks.wmich.edu/pure>



Part of the Geology Commons

WMU ScholarWorks Citation

MGRRE, "MGRRE_PureOilScoutTickets_BEGOLE_1_21049019430000" (2021). *Legacy Scout Tickets from Pure Oil Company*. 1632.

<https://scholarworks.wmich.edu/pure/1632>

This Document is brought to you for free and open access via ScholarWorks at WMU. It has been accepted for inclusion in Legacy Scout Tickets from Pure Oil Company by an authorized administrator of ScholarWorks at WMU. See the National Digital Catalogue - Science Base Catalogue for more collections submitted by MGRRE.



MGRRE_PureOilScoutTickets_BEGOLE_1_21049019430000

API 21049019430000

Permit Number 1943

Lease Name BEGOLE

Well Number 1

County Genesee

Township 7N

Range 6E

Section 31

2021 DEQ or Pure co_name POWER OIL CO

Pure Number 9

Latitude 42.97118

Longitude -83.80767

THE PURE OIL COMPANY

LOCATION REPORT

No. 9

DATE 3/23/34

STATE Michigan COUNTY Genesee DIST. Flint TWP. Flint SEC. 31 TOWN 7 N RANGE 6 E

WELL No. 1 (SERIAL No. 9) FARM Floyd H. Begole ACRES

NAME OF STREAM OR WATERS QUADRANGLE NE-NW-NW

OPERATOR Power Oil Company MAP Flint Township, Genesee County

400 Feet from North Line of Farm

330 " " East " " "

" " South " " "

" " West " " "

400 Feet from North Line of Section

" " East " " "

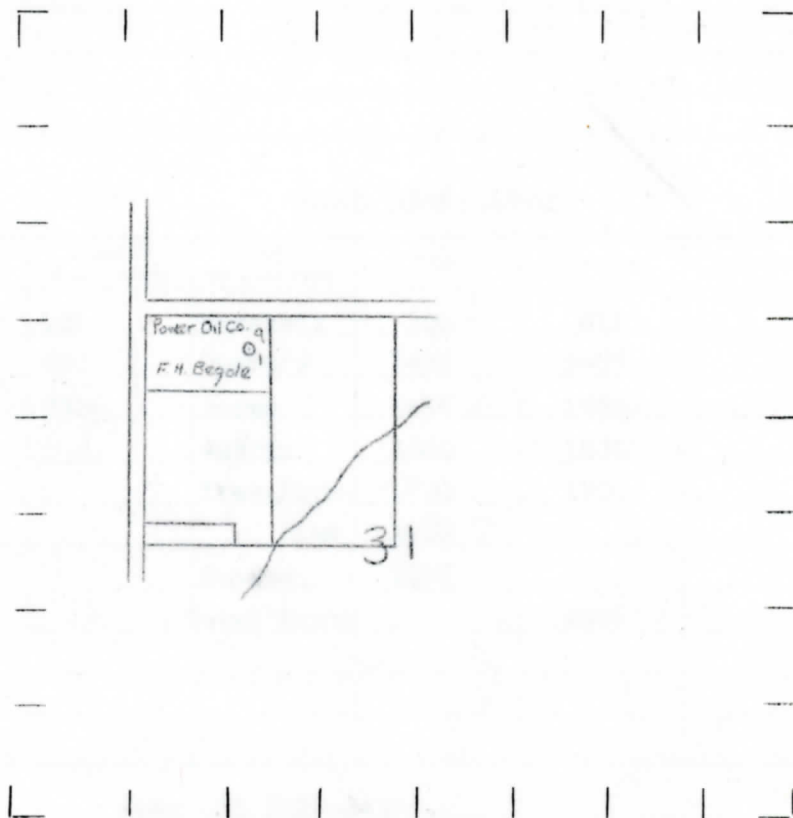
" " South " " "

990 " " West " " "

LEGEND

- LOCATION
- ① RIG
- ⊕ DRILLING
- ⊙ GAS WELL
- OIL WELL
- ⊕ SMALL OIL WELL
- ◇ DRY HOLE
- ◆ DRY SHOWING OIL
- ⊙ DRY SHOWING GAS
- ⊕ ABANDONED LOCATION
- ⊙ ABANDONED GAS WELL
- ⊕ ABANDONED OIL WELL

NOTE: Below make tracing from map, (when no map is obtainable make sketch) showing farm, center of section, this location with measurements and also wells, dry holes, or other locations in the vicinity of this location. Make copy to keep for reference and send original to Columbus office.



REMARKS:

SIGNED

R. D. Yeager
Superintendent or Foreman.

Per-1943

Michigan Producing DIVISION
COMPLETION RECORD

DATE 7-5-34 No. 9

STATE Michigan COUNTY Genesee DIST. TWP. Flint SEC. 31 TOWN 7N RANGE 6E
 PREC.

WELL No. 1 (SERIAL No. 9) FARM Floyd H. Begole ACRES _____

NAME OF STREAM OR WATERS _____ QUADRANGLE NE NW NW

OPERATOR Power Oil Company MAP Flint Township, Genesee County

LOCATION REPORT SENT IN (DATE) 3/23/34

WELL STARTED (DATE) 4/18/34 WELL COMPLETED (DATE) 6/27/34

WATER WELL
 IRREGULAR WELL
 DRY HOLE
 ABANDONED WELL

Elevation 791.5'

CROSS OUT THREE OF THE ABOVE
WELL RECORD

DATE OF SHOT _____ NUMBER OF QUARTS _____

1st 24 HOURS PRODUCTION	2nd "	3rd "	4th "	5th "	BARRELS OR FEET
<u>Dry Hole</u>					
"	"	"	"	"	" " "
"	"	"	"	"	" " "
"	"	"	"	"	" " "

SAND AND CASING

CASING SIZE	WEIGHT	CASING Feet Inches	SAND Name and Nature	TOP	BOTTOM	TOP PAY	BOTTOM PAY	SALT WATER
<u>10"</u>		<u>109</u>	<u>Marshall</u>	<u>300</u>	<u>412</u>			<u>660-675</u>
<u>8 1/4"</u>		<u>890</u>	<u>Sunbury</u>	<u>1435</u>	<u>1455</u>			<u>1460</u>
<u>5-3/16"</u>		<u>2324</u>	<u>Berea</u>	<u>1455</u>	<u>1530</u>			
			<u>Antrim</u>	<u>1660</u>	<u>1870</u>			
			<u>Trav. Form.</u>	<u>1870</u>	<u>1905</u>			<u>1985-1995</u>
			<u>" Lime</u>	<u>1905</u>				
			<u>Dundee</u>	<u>2298</u>				
			<u>Total Depth</u>		<u>2446</u>			<u>2440-2446'</u>

REMARKS Show Oil 2428-2432'.