



Western Michigan University  
ScholarWorks at WMU

---

Legacy Scout Tickets from Pure Oil Company

---

8-20-2021

**MGRRE\_PureOilScoutTickets\_TORREY ANNA\_1\_21049028290000**

MGRRE

*Western Michigan University*

Follow this and additional works at: <https://scholarworks.wmich.edu/pure>



Part of the Geology Commons

---

#### WMU ScholarWorks Citation

MGRRE, "MGRRE\_PureOilScoutTickets\_TORREY ANNA\_1\_21049028290000" (2021). *Legacy Scout Tickets from Pure Oil Company*. 1635.

<https://scholarworks.wmich.edu/pure/1635>

This Document is brought to you for free and open access via ScholarWorks at WMU. It has been accepted for inclusion in Legacy Scout Tickets from Pure Oil Company by an authorized administrator of ScholarWorks at WMU. See the National Digital Catalogue - Science Base Catalogue for more collections submitted by MGRRE.



---

**MGRRE\_PureOilScoutTickets\_TORREY ANNA\_1\_21049028290000**

API 21049028290000

Permit Number 2829

Lease Name TORREY ANNA

Well Number 1

County Genesee

Township 9N

Range 8E

Section 5

2021 DEQ or Pure co\_name SMITH PETROLEUM CO

Pure Number 12

Latitude 43.22057

Longitude -83.54365

DATE October 17, 1935

LOCATION REPORT

No. 12

STATE Michigan COUNTY Genesee DIST. Forest TWP. G Forest SEC. 5 TOWN 9N RANGE 8E

WELL No. 1 (SERIAL No. 12) FARM Anna Torrey ACRES

NAME OF STREAM OR WATERS QUADRANGLE SW-NE-NE

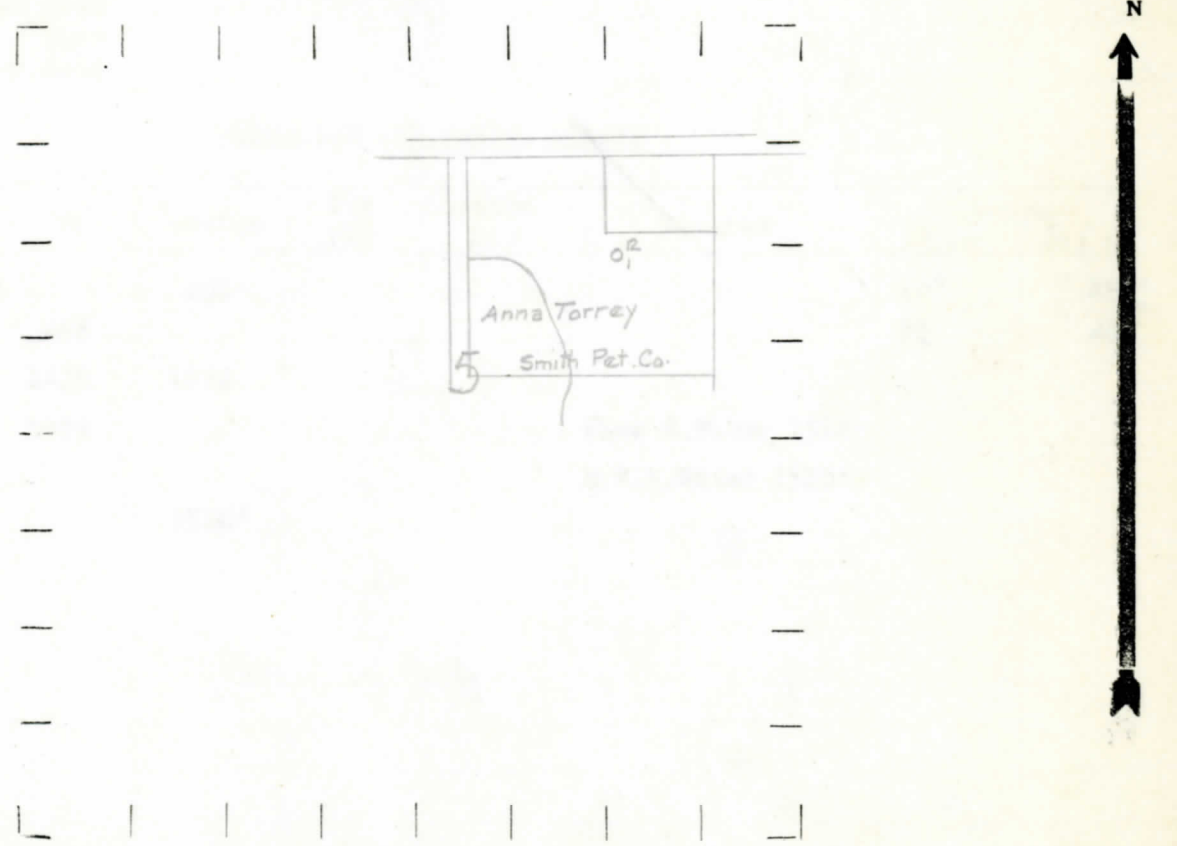
OPERATOR Smith Petroleum Company Map Forest Township, Genesee County

330 330 Feet from North Line of Farm  
990 990 " " East " " "  
" " South " " "  
" " West " " "  
990 990 Feet from North Line of Section  
990 990 " " East " " "  
" " South " " "  
" " West " " "

LEGEND

- LOCATION
- ⊕ RIG
- ⊕ DRILLING
- ☀ GAS WELL
- OIL WELL
- SMALL OIL WELL
- ⊕ DRY HOLE
- DRY SHOWING OIL
- ⊕ DRY SHOWING GAS
- ⊕ ABANDONED LOCATION
- ☀ ABANDONED GAS WELL
- ABANDONED OIL WELL

NOTE: Below make tracing from map, (when no map is obtainable make sketch) showing farm, center of section, this location with measurements and also wells, dry holes, or other locations in the vicinity of this location.



REMARKS:

SIGNED

*R. L. Yeager*

Superintendent or Foreman.

COMPLETION RECORD OF WELLS DRILLED BY OTHER OPERATORS

Michigan Producing Division

Date 11/7/35 No. 12  
 State Michigan County Genesee Dist. Forest  
 (Serial No.) Twp. Forest Sec. 5 Twp. 9N Rge. 8E  
 Well No. 1 (County No.) 12 Farm Anna Torrey Acres \_\_\_\_\_  
 Operator Smith Petroleum Company Information secured from Scouting Dept. by \_\_\_\_\_  
 Date well started 10/16/35 Date well completed 11/1/35 Elevation 799'

PRODUCTION RECORD

1st 24 hours natural Dry Hole  
 2nd 24 hours natural \_\_\_\_\_  
 Date of shot \_\_\_\_\_ No. of quarts \_\_\_\_\_ From \_\_\_\_\_ to \_\_\_\_\_ From \_\_\_\_\_ to \_\_\_\_\_  
 Date of acid \_\_\_\_\_ No. of gallons \_\_\_\_\_  
 shot \_\_\_\_\_  
 1st 24 hours after acid \_\_\_\_\_  
 shot \_\_\_\_\_  
 2nd 24 hours after acid \_\_\_\_\_

FORMATION AND CASING RECORD

Formation	Top	Bottom	Top Pay	Bottom Pay	Remarks	Casing	
						Size	Set at
Upper Marshall		458'				10"	150'
Lower "	458					8 1/4"	485'
Sunbury	1439	1479					
Berea	1479				Show S. Water 1504'		
					H.F.S. Water 1510'		
Total Depth		1510'					

Remarks \_\_\_\_\_  
 \_\_\_\_\_  
 \_\_\_\_\_  
 \_\_\_\_\_

Signed \_\_\_\_\_