



Western Michigan University  
ScholarWorks at WMU

---

Legacy Scout Tickets from Pure Oil Company

---

8-20-2021

**MGRRE\_PureOilScoutTickets\_OLDS, EDGAR B.  
EST.\_1\_21049031110000**

MGRRE  
*Western Michigan University*

Follow this and additional works at: <https://scholarworks.wmich.edu/pure>



Part of the Geology Commons

---

#### WMU ScholarWorks Citation

MGRRE, "MGRRE\_PureOilScoutTickets\_OLDS, EDGAR B. EST.\_1\_21049031110000" (2021). *Legacy Scout Tickets from Pure Oil Company*. 1637.  
<https://scholarworks.wmich.edu/pure/1637>

This Document is brought to you for free and open access via ScholarWorks at WMU. It has been accepted for inclusion in Legacy Scout Tickets from Pure Oil Company by an authorized administrator of ScholarWorks at WMU. See the National Digital Catalogue - Science Base Catalogue for more collections submitted by MGRRE.



---

**MGRRE\_PureOilScoutTickets\_OLDS, EDGAR B. EST.\_1\_21049031110000**

API 21049031110000

Permit Number 3111

Lease Name OLDS, EDGAR B. EST.

Well Number 1

County Genesee

Township 9N

Range 8E

Section 35

2021 DEQ or Pure co\_name NADELL JEROME

Pure Number 14

Latitude 43.1433

Longitude -83.4832

DATE March 12, 1936

LOCATION REPORT

No. 14

STATE Michigan

COUNTY Genesee

Genesee

TWP. Forest

SEC. 35

TOWN 9 N

RANGE 8 E

WELL No. 1 (SERIAL No. 14) FARM

PREC. Edgar B. Olds Est.

ACRES

NAME OF STREAM OR WATERS

QUADRANGLE NW-NE-SE

OPERATOR Jerome Nadell

Jerome Nadell

Map Forest Township, Genesee County

330 330 Feet from North Line of Farm

Location

" " East " " "

" " South " " "

330 330 " " West " " "

330 330 Feet from North Line of Section

990 990 " " East " " "

" " South " " "

" " West " " "

LEGEND

○ LOCATION

⊙ DRY HOLE

⊕ RIG

◆ DRY SHOWING OIL

⊕ DRILLING

⊙ DRY SHOWING GAS

☀ GAS WELL

⊙ ABANDONED LOCATION

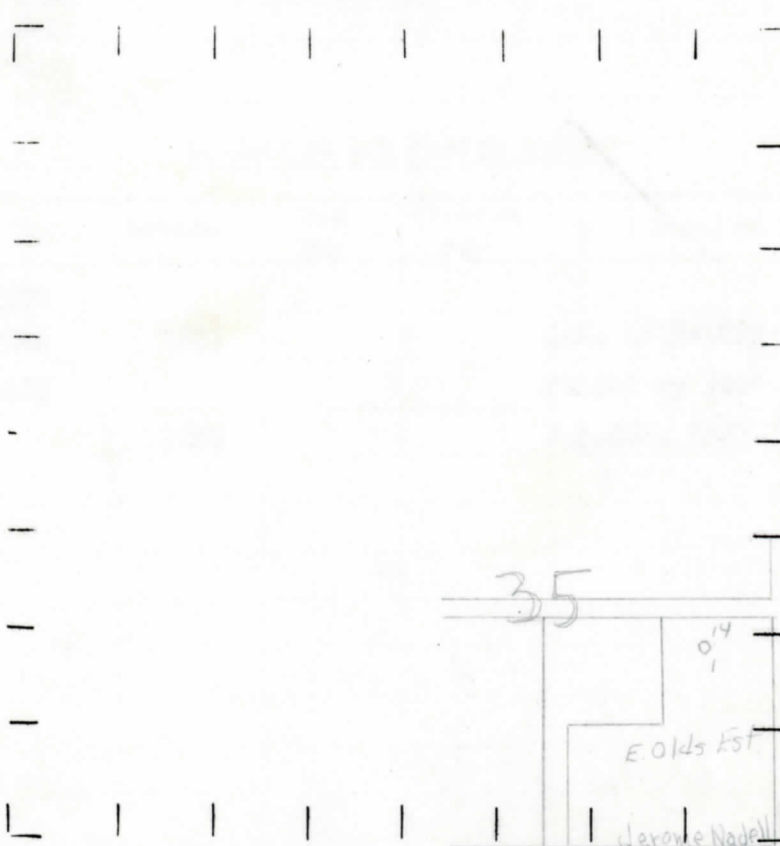
● OIL WELL

☀ ABANDONED GAS WELL

◆ SMALL OIL WELL

● ABANDONED OIL WELL

NOTE: Below make tracing from map, (when no map is obtainable make sketch) showing farm, center of section, this location with measurements and also wells, dry holes, or other locations in the vicinity of this location.



REMARKS:

SIGNED

R. L. Yeager

Superintendent or Foreman.

COMPLETION RECORD OF WELLS DRILLED BY OTHER OPERATORS

Michigan Producing Division

Date **July 16, 1936** No. **14**  
 State **Michigan** County **Genesee** Dist. **Forest**  
 Twp. **Forest** Sec. **35** Twp. **9 N** Rge. **8 E**  
 Well No. **1** (Serial No.) **14** Farm **E. B. Olds Estate** Acres \_\_\_\_\_  
 Operator **Jerome Nadell** Information secured ~~xxxx~~ by **Scouting Department**  
 Date well started **5-14-36** Date well completed **6-13-36** Elevation **859.3**

PRODUCTION RECORD

1st 24 hours natural **Dry Hole**  
 2nd 24 hours natural \_\_\_\_\_  
 Date of shot \_\_\_\_\_ No. of quarts \_\_\_\_\_ From \_\_\_\_\_ to \_\_\_\_\_ From \_\_\_\_\_ to \_\_\_\_\_  
 Date of acid \_\_\_\_\_ No. of gallons \_\_\_\_\_  
 1st 24 hours after acid shot \_\_\_\_\_  
 2nd 24 hours after acid shot \_\_\_\_\_

FORMATION AND CASING RECORD

Formation	Top	Bottom	Top Pay	Bottom Pay	Remarks	Casing	
						Size	Set At
<b>Marshall</b>	<b>330</b>					<b>10"</b>	<b>223</b>
<b>Sunbury</b>	<b>1562</b>	<b>1603</b>			<b>S.W. 1619-1623-</b>	<b>8 1/2"</b>	<b>530</b>
<b>Berea</b>	<b>1603</b>				<b>filled up 300'</b>		
<b>Total Depth</b>		<b>1627</b>			<b>H.F.S.W. 1627</b>		

Remarks \_\_\_\_\_

Signed **J.H. Bell**