



Western Michigan University
ScholarWorks at WMU

Legacy Scout Tickets from Pure Oil Company

8-20-2021

**MGRRE_PureOilScoutTickets_REED, HERBERT
S._1_21049055450000**

MGRRE
Western Michigan University

Follow this and additional works at: <https://scholarworks.wmich.edu/pure>



Part of the Geology Commons

WMU ScholarWorks Citation

MGRRE, "MGRRE_PureOilScoutTickets_REED, HERBERT S._1_21049055450000" (2021). *Legacy Scout Tickets from Pure Oil Company*. 1639.
<https://scholarworks.wmich.edu/pure/1639>

This Document is brought to you for free and open access via ScholarWorks at WMU. It has been accepted for inclusion in Legacy Scout Tickets from Pure Oil Company by an authorized administrator of ScholarWorks at WMU. See the National Digital Catalogue - Science Base Catalogue for more collections submitted by MGRRE.



MGRRE_PureOilScoutTickets_REED, HERBERT S._1_21049055450000

API 21049055450000

Permit Number 5545

Lease Name REED, HERBERT S.

Well Number 1

County Genesee

Township 9N

Range 5E

Section 29

2021 DEQ or Pure co_name REED CLAUDE M

Pure Number 16

Latitude 43.14755

Longitude -83.90645

The Pure Oil Company
COMPLETION RECORD OF WELLS DRILLED BY OTHER OPERATORS
THE PURE OIL COMPANY

DATE October 31, 1938

LOCATION REPORT

No. 16

STATE Michigan COUNTY Genesee DIST Montrose TWP Montrose SEC. 29 TOWN 9 N RANGE 5 E

WELL No. 1/ (SERIAL No. 16) FARM Herbert S. Reed ACRES

NAME OF STREAM OR WATERS QUADRANGLE SW-SE-SW

OPERATOR Claude M. Reed Map Montrose Township, Genesee County
Claude M. Reed Montrose-Genesee

Feet from North Line of Farm

32330 " " East " " "
32330 " " South " " "
32330 " " West " " "

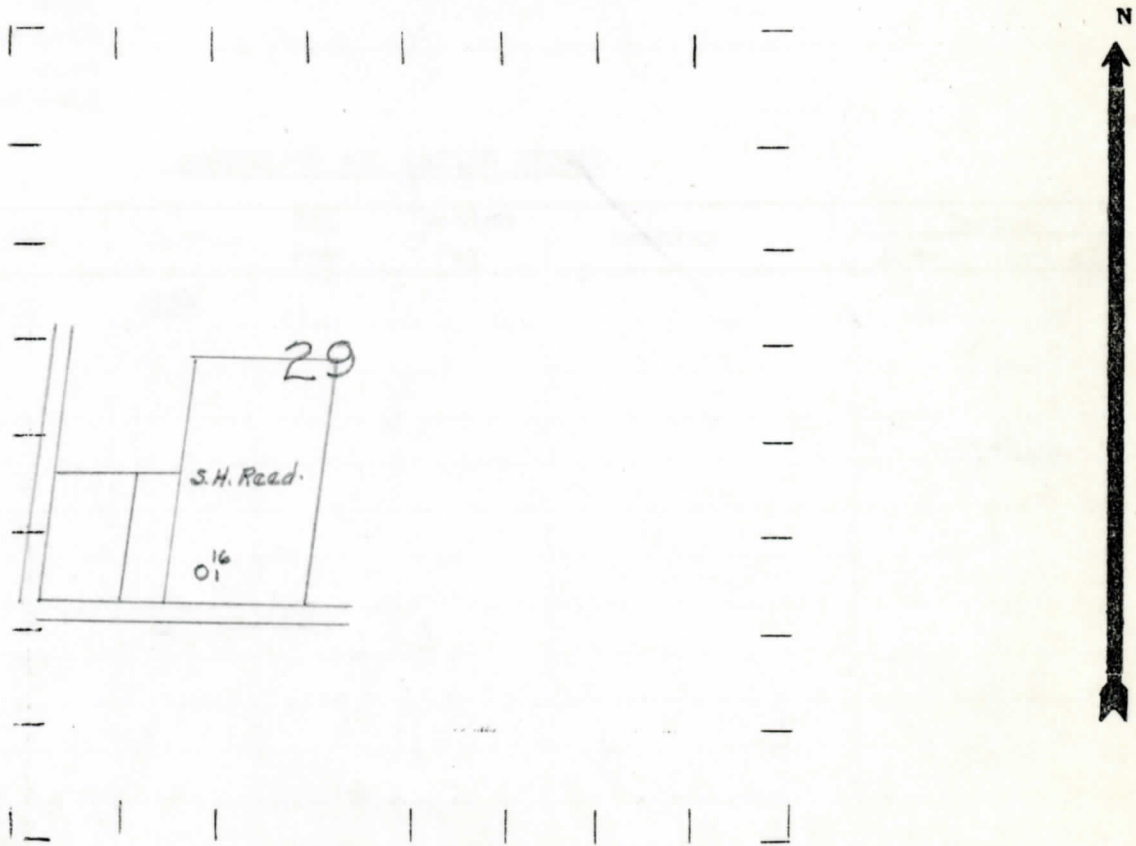
Feet from North Line of Section

990 " " East " 1/4 "
32330 " " South " " "
" " West " " "

LEGEND

- LOCATION
- ⊙ RIG
- ⊕ DRILLING
- ☀ GAS WELL
- OIL WELL
- ⬇ SMALL OIL WELL
- ⊖ DRY HOLE
- ⬆ DRY SHOWING OIL
- ⊖ DRY SHOWING GAS
- ⊖ ABANDONED LOCATION
- ☀ ABANDONED GAS WELL
- ⬆ ABANDONED OIL WELL

NOTE: Below make tracing from map, (when no map is obtainable make sketch) showing farm, center of section, this location with measurements and also wells, dry holes, or other locations in the vicinity of this location.



REMARKS:

SIGNED

R. J. J.

Superintendent or Foreman

Michigan Producing Division

Date January 19, 1939 No. 16
State Mich. County Genesee ~~Block.~~ Twp. Montrose Sec. 29 Twp. 9 N Rge. 5 E
Well No. 1 (~~Serial No.~~) 16 Farm Herbert S. Reed Acres _____
Operator Claude M. Reed Information secured ~~from~~ By Scouting Department
Date well started 10-28-38 Date well completed Not completed Elevation 679.6

PRODUCTION RECORD

1st 24 hours natural Abandoned 1-17-39
2nd 24 hours natural _____
Date of shot _____ No. of quarts _____ From _____ to _____ From _____ to _____
Date of acid _____ No. of gallons _____
1st 24 hours after acid shot
2nd 24 hours after acid shot

FORMATION AND CASING RECORD

Formation	Top	Bottom	Top Pay	Bottom Pay	Remarks	Casing	
						Size	Set at
<u>Total Depth</u>		<u>150</u>					

Remarks _____

Signed D. C. Shackelford