



Legacy Scout Tickets from Pure Oil Company

---

8-20-2021

**MGRRE\_PureOilScoutTickets\_BURLSON,  
ROY\_1\_21049084960000**

MGRRE

*Western Michigan University*

Follow this and additional works at: <https://scholarworks.wmich.edu/pure>



Part of the Geology Commons

---

#### **WMU ScholarWorks Citation**

MGRRE, "MGRRE\_PureOilScoutTickets\_BURLSON, ROY\_1\_21049084960000" (2021). *Legacy Scout Tickets from Pure Oil Company*. 1644.

<https://scholarworks.wmich.edu/pure/1644>

This Document is brought to you for free and open access via ScholarWorks at WMU. It has been accepted for inclusion in Legacy Scout Tickets from Pure Oil Company by an authorized administrator of ScholarWorks at WMU. See the National Digital Catalogue - Science Base Catalogue for more collections submitted by MGRRE.



---

**MGRRE\_PureOilScoutTickets\_BURLSON, ROY\_1\_21049084960000**

API 21049084960000

Permit Number 8496

Lease Name BURLSON, ROY

Well Number 1

County Genesee

Township 7N

Range 5E

Section 27

2021 DEQ or Pure co\_name BURR LEWIS

Pure Number 21

Latitude 42.9815

Longitude -83.85404

THE PURE OIL COMPANY

DATE March 26, 1941

The LOCATION REPORT

No. 21

COMPLETION RECORD OF WELLS DRILLED BY OTHER OPERATORS

STATE Michigan COUNTY Genesee ~~RISK~~ TWP. Clayton SEC. 27 TOWN 7 N RANGE 5 E

WELL No. 1 (SERIAL No. 21) FARM Roy Burlson ~~RISK~~ Roy Burlson ACRES

NAME OF STREAM OR WATERS \_\_\_\_\_ QUADRANGLE NW SE NE SE NE

OPERATOR Lewis Burr Map Clayton Township, Genesee County

350 350 Lewis Burr Feet from North Line of Farm

" " East " " "

" " South " " "

450 450 " " West " " "

Feet from North Line of Section

870 870 " " East 1/4 "

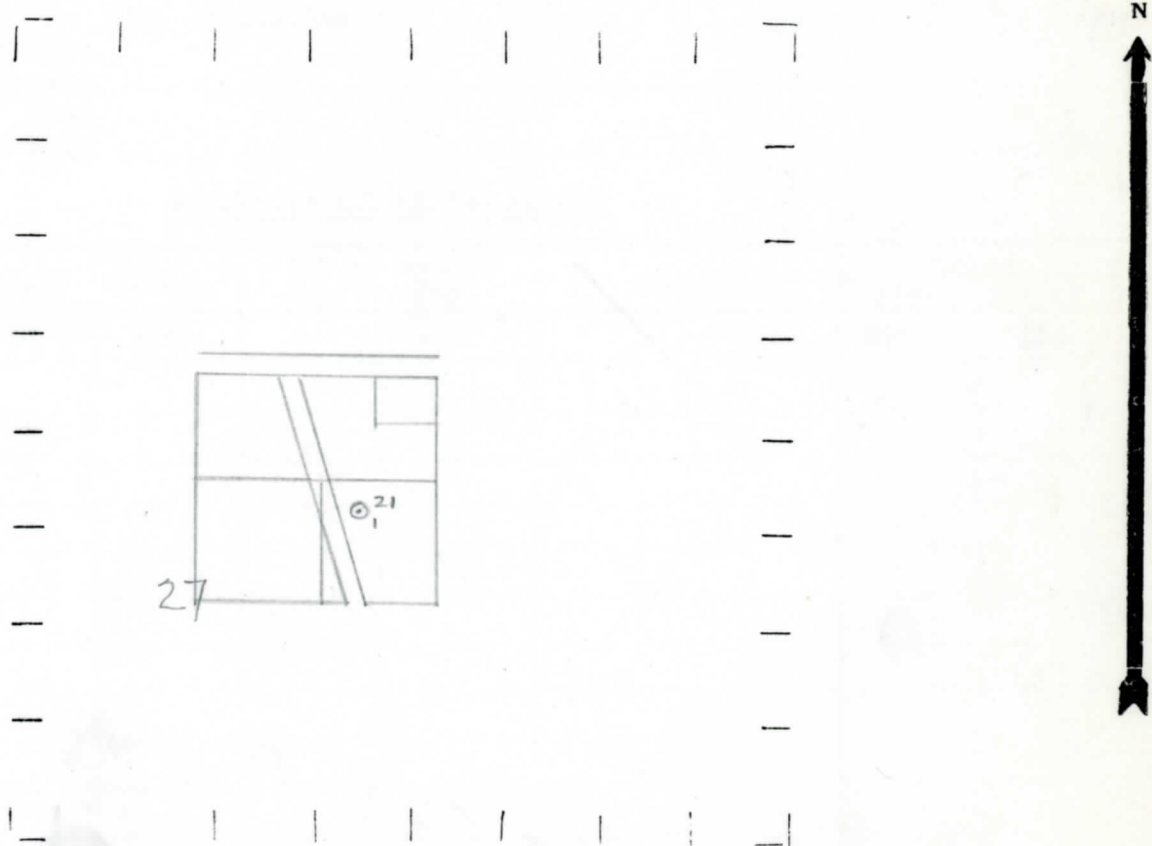
970 970 " " South " " "

" " West " " "

LEGEND

- LOCATION
- ⊙ RIG
- ⊕ DRILLING
- ☼ GAS WELL
- OIL WELL
- ⬮ SMALL OIL WELL
- ⊖ DRY HOLE
- ⬮ DRY SHOWING OIL
- ⊖ DRY SHOWING GAS
- ⊖ ABANDONED LOCATION
- ☼ ABANDONED GAS WELL
- ⬮ ABANDONED OIL WELL

NOTE: Below make tracing from map. (when no map is obtainable make sketch) showing farm, center of section, this location with measurements and also wells, dry holes, or other locations in the vicinity of this location.



REMARKS:

\_\_\_\_\_  
\_\_\_\_\_  
\_\_\_\_\_

SIGNED

W  
Superintendent or Foreman.

