



Western Michigan University  
ScholarWorks at WMU

---

Legacy Scout Tickets from Pure Oil Company

---

8-20-2021

**MGRRE\_PureOilScoutTickets\_DAVIDSON,  
JEANETTE\_1\_21049089920000**

MGRRE  
*Western Michigan University*

Follow this and additional works at: <https://scholarworks.wmich.edu/pure>



Part of the Geology Commons

---

#### **WMU ScholarWorks Citation**

MGRRE, "MGRRE\_PureOilScoutTickets\_DAVIDSON, JEANETTE\_1\_21049089920000" (2021). *Legacy Scout Tickets from Pure Oil Company*. 1645.

<https://scholarworks.wmich.edu/pure/1645>

This Document is brought to you for free and open access via ScholarWorks at WMU. It has been accepted for inclusion in Legacy Scout Tickets from Pure Oil Company by an authorized administrator of ScholarWorks at WMU. See the National Digital Catalogue - Science Base Catalogue for more collections submitted by MGRRE.



---

**MGRRE\_PureOilScoutTickets\_DAVIDSON, JEANETTE\_1\_21049089920000**

API 21049089920000

Permit Number 8992

Lease Name DAVIDSON, JEANETTE

Well Number 1

County Genesee

Township 9N

Range 8E

Section 8

2021 DEQ or Pure co\_name HEINIG HUGH H

Pure Number 22

Latitude 43.20835

Longitude -83.55917

DATE September 24, 1941

LOCATION REPORT

No. 22

STATE Michigan

COUNTY Genesee

DIST. Forest

TWP. Forest

SEC. 8

TOWN 9 N

RANGE 8 E

WELL No. 1

(SERIAL No. 22)

FARM

Jeanette Davidson

ACRES

NAME OF STREAM OR WATERS

QUADRANGLE

NW NW NW NW NW

OPERATOR Hugh H. Heinig

Map

Forest Township, Genesee County

330 330 Feet from North Line of Farm

" " East " " "

" " South " " "

250 250 " " West " " "

330 330 Feet from North Line of Section 1/4 1/4

" " East " " "

" " South " " "

250 250 " " West " " "

*Lod*

*Forest - Genesee*

LEGEND

○ LOCATION

⊕ RIG

⊕ DRILLING

☀ GAS WELL

● OIL WELL

● SMALL OIL WELL

⊙ DRY HOLE

● DRY SHOWING OIL

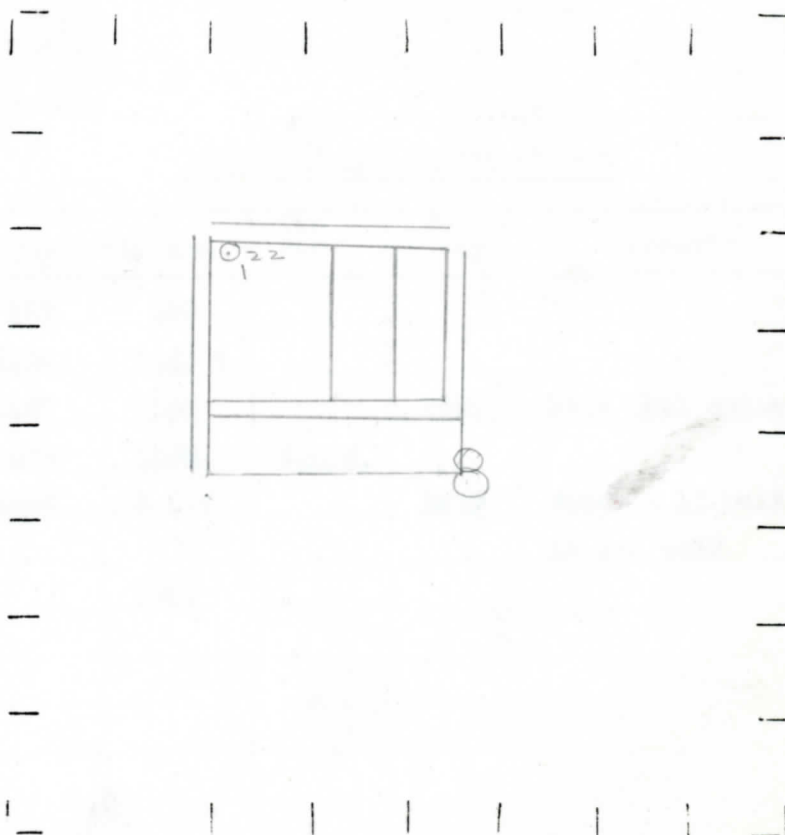
⊙ DRY SHOWING GAS

⊙ ABANDONED LOCATION

☀ ABANDONED GAS WELL

● ABANDONED OIL WELL

NOTE: Below make tracing from map, (when no map is obtainable make sketch) showing farm, center of section, this location with measurements and also wells, dry holes, or other locations in the vicinity of this location.



N



REMARKS:

SIGNED

Subintendent or Foreman.

*J*

330  
 OBSERVATOR Hugh H. Heinig  
 NAME OF SURVEYOR OR MALETS  
 THE PURE OIL COMPANY  
 LOCATION REPORT  
 No. 101547 Genesee County  
 SEC. 8 TWP. 9 N RGE. 8 E

Date February 4, 1942 No. 22  
 State Mich. County Genesee District Forest Twp. 9 N Sec. 8 Rge. 8 E  
 Well No. 1 (Serial No.) 22 Farm Jeanette Davidson Acres  
 Operator Hugh H. Heinig Information secured Scouting Department  
 Date well started 10-1-41 Date well completed 12-8-41 Elevation 782.6

PRODUCTION RECORD

1st 24 hours natural Dry Hole  
 2nd 24 hours natural  
 Date of shot No. of quarts From to From to  
 Date of acid No. of gallons  
 1st 24 hours after acid shot  
 2nd 24 hours after acid shot

FORMATION AND CASING RECORD

Formation	Top	Bottom	Top Pay	Bottom Pay	Remarks	Casing	
						Size	Set at
Marshall	127	400				10"	127
Sunbury	1424	1467 ?				8-1/4"	476
Berea	1467	1565		1567	Hole full water.	6-5/8"	1600
Antrim	1685	1868	S.L.M.				
Traverse Lime	1868	S.L.M.		1869	Water - 15 bailers in one week.		
Total Depth		1927					

Remarks 1874' CTM equals 1871' S.L.M.

Signed D. C. Shackelford