



Legacy Scout Tickets from Pure Oil Company

8-20-2021

**MGRRE_PureOilScoutTickets_SMITH, CHARLES
E._1_21049090900000**

MGRRE
Western Michigan University

Follow this and additional works at: <https://scholarworks.wmich.edu/pure>



Part of the Geology Commons

WMU ScholarWorks Citation

MGRRE, "MGRRE_PureOilScoutTickets_SMITH, CHARLES E._1_21049090900000" (2021). *Legacy Scout Tickets from Pure Oil Company*. 1646.
<https://scholarworks.wmich.edu/pure/1646>

This Document is brought to you for free and open access via ScholarWorks at WMU. It has been accepted for inclusion in Legacy Scout Tickets from Pure Oil Company by an authorized administrator of ScholarWorks at WMU. See the National Digital Catalogue - Science Base Catalogue for more collections submitted by MGRRE.



MGRRE_PureOilScoutTickets_SMITH, CHARLES E._1_21049090900000

API 21049090900000

Permit Number 9090

Lease Name SMITH, CHARLES E.

Well Number 1

County Genesee

Township 9N

Range 8E

Section 5

2021 DEQ or Pure co_name GLAVIN J C

Pure Number 23

Latitude 43.21195

Longitude -83.5514

DATE October 22, 1941

LOCATION REPORT

No.

STATE Michigan

COUNTY Genesee

Genesee

DIST.

TWP. Forest

SEC. 5

TOWN 9N

RANGE 8E

WELL No. 1

(SERIAL No. 23)

FARM

PREC. Charles E. Smith

ACRES

NAME OF STREAM OR WATERS

QUADRANGLE

NE SE SW

OPERATOR

J. C. Glavin

Map

Forest Township, Genesee County

Forest - Genesee

330 330 Feet from North Line of Farm

330 330 " " East " " "

" " South " " "

" " West " " "

Feet from North Line of Section

330 330 " " East " 1/4

990 990 " " South " " "

" " West " " "

LEGEND

○ LOCATION

⊙ RIG

⊕ DRILLING

☼ GAS WELL

● OIL WELL

◆ SMALL OIL WELL

⊙ DRY HOLE

◆ DRY SHOWING OIL

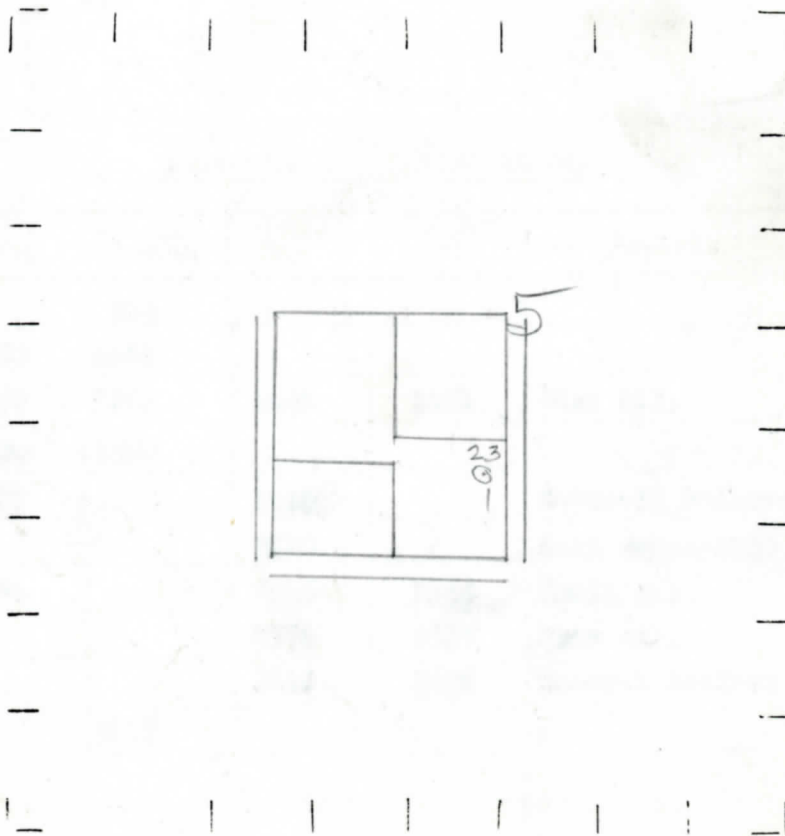
☼ DRY SHOWING GAS

⊙ ABANDONED LOCATION

☼ ABANDONED GAS WELL

◆ ABANDONED OIL WELL

NOTE: Below make tracing from map, (when no map is obtainable make sketch) showing farm, center of section, this location with measurements and also wells, dry holes, or other locations in the vicinity of this location.



REMARKS:

SIGNED

W

Superintendent or Foreman.

J

Form 21 - OIL - 1-23-40 - P.O. - Form
 DATE October 22, 1941
 STATE Mich. COUNTY Genesee DIST. TWP. Forest SEC. 5 TOWN SN RANGE 8E
 WELL NO. 330 OPERATOR J. C. Glavin OBSERVER T. C. Shackelford
 THE PURE OIL COMPANY LOCATION REPORT
 DISTRICT OFFICE LOCATION
 LEGEND
 ACRES

State Mich. County Genesee Twp. Forest Sec. 5 Twp. 9 N Rge. 8 E
 Well No. 1 (Serial No. 330) Farm Charles E. Smith Acres _____
 Operator J. C. Glavin Information secured from Scouting Department
 Date well started 10-23-41 Date well completed 3-16-42 Elevation 804.4

PRODUCTION RECORD

1st 24 hours natural Dry Hole
 2nd 24 hours natural _____
 Date of shot _____ No. of quarts _____ From _____ to _____ From _____ to _____
 Date of acid _____ No. of gallons _____
 1st 24 hours after acid shot _____
 2nd 24 hours after acid shot _____

FORMATION AND CASING RECORD

Formation	Top	Bottom	Top Pay	Bottom Pay	Remarks	Casing	
						Size	Set at
<u>Marshall</u>		<u>505</u>				<u>10"</u>	<u>198</u>
<u>Sunbury</u>	<u>1425</u>	<u>1460</u>				<u>8-1/4"</u>	<u>521</u>
<u>Berea</u>	<u>1460</u>	<u>1560</u>	<u>1460</u>	<u>1471</u>	<u>Show oil.</u>	<u>6-5/8"</u>	<u>1620</u>
<u>Antrim</u>	<u>1690</u>	<u>1900</u>				<u>5-3/16"</u>	<u>2384</u>
<u>Traverse Lime</u>	<u>1900</u>		<u>1900</u>		<u>Water-3 1/2 bailers per hour.</u>		
			<u>2010</u>		<u>Salt water-1000 ft.</u>		
<u>Dundee</u>	<u>2384</u>		<u>2545</u>	<u>2555</u>	<u>Smell gas.</u>		
			<u>2576</u>	<u>2585</u>	<u>Show oil.</u>		
			<u>2640</u>	<u>2698</u>	<u>Water-2 bailers per hour.</u>		
<u>Total Depth</u>		<u>3117</u>					

Remarks _____

Signed D. C. Shackelford