



Western Michigan University
ScholarWorks at WMU

Legacy Scout Tickets from Pure Oil Company

8-20-2021

MGRRE_PureOilScoutTickets_MULLIGAN_1_21049104820000

MGRRE

Western Michigan University

Follow this and additional works at: <https://scholarworks.wmich.edu/pure>



Part of the Geology Commons

WMU ScholarWorks Citation

MGRRE, "MGRRE_PureOilScoutTickets_MULLIGAN_1_21049104820000" (2021). *Legacy Scout Tickets from Pure Oil Company*. 1649.

<https://scholarworks.wmich.edu/pure/1649>

This Document is brought to you for free and open access via ScholarWorks at WMU. It has been accepted for inclusion in Legacy Scout Tickets from Pure Oil Company by an authorized administrator of ScholarWorks at WMU. See the National Digital Catalogue - Science Base Catalogue for more collections submitted by MGRRE.



MGRRE_PureOilScoutTickets_MULLIGAN_1_21049104820000

API 21049104820000

Permit Number 10482

Lease Name MULLIGAN

Well Number 1

County Genesee

Township 9N

Range 8E

Section 25

2021 DEQ or Pure co_name BURTON JOHN F

Pure Number 26

Latitude 43.15783

Longitude -83.47607

THE PURE OIL COMPANY
 LOCATION REPORT

COMPLETION RECORD OF WELLS DRILLED BY OTHER OPERATORS

Date November 10, 1943 A.F.E. No. _____

Division Mich. Producing District _____ Lease Mulligan

Acres _____ Lease No. _____ Elevation _____ Well No. 1 (Serial No. 26)

Quadrangle NE-NW-SW Sec. 25 Twp. 9 N Rge. 8 E Twp. Forest

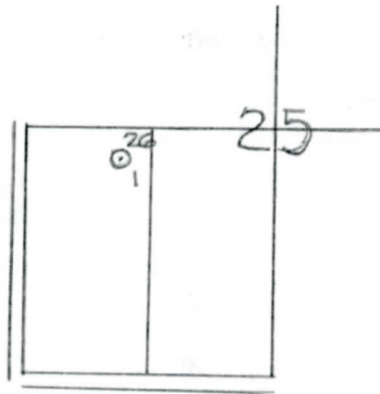
Survey _____ County Genesee State Michigan

Operator John F. Burton Map Forest Twp. Genesee Co.

<u>330</u>	<u>330</u>	Feet from North Line of Lease
<u>330</u>	<u>330</u>	" " East " " "
		" " South " " "
		" " West " " "
<u>330</u>	<u>330</u>	Feet from North Line of Section <u>1/4</u>
		" " East " " "
		" " South " " "
<u>990</u>	<u>990</u>	" " West " " "

LEGEND

- Location
- ☀ Gas Well
- Oil Well
- ☀ Gas - Distillate Well
- or ○ Dry Hole
- Dry Showing Oil
- ☀ Dry Showing Gas
- ⊙ Abandoned Location
- ☀ or ☀ Abandoned Gas Well
- or ● Abandoned Oil Well
- or ○ Input Well



Remarks: _____

Scale _____

Submitted by RN Civil Engineer

Approved by _____ Division Manager

Approved by _____ Vice-President - General Manager

Michigan Producing Division

Date April 26, 1944 No. 26
 State Mich. County Genesee ~~11883~~ Twp. Forest Sec. 25 Twp. 9 N Rge. 8 E
 (Serial No.)
 Well No. 1 (~~11883~~) 26 Farm Mulligan Acres _____
 Operator John F. Burton Information secured ~~from~~ Scouting Department By _____
 Date well started 11-6-43 Date well completed 4-20-44 Elevation 850.5

PRODUCTION BOARD

1st 24 hours natural Dry Hole
 2nd 24 hours natural _____
 Date of shot _____ No. of quarts _____ From _____ to _____ From _____ to _____
 Date of acid _____ No. of gallons _____
 shot
 1st 24 hours after acid _____
 shot
 2nd 24 hours after acid _____

FORMATION AND CASING RECORD

Formation	Top	Bottom	Top Pay	Bottom Pay	Remarks	Casing	
						Size	Set at
Marshall	377					10"	205
Coldw. Red Rock	752	755				6-5/8"	605
Sunbury	1578						
Berea	1621				H.F.S.W. 1665.		
Total Depth		1665					

Remarks _____

Signed D. C. Shackelford