



Western Michigan University  
ScholarWorks at WMU

---

Legacy Scout Tickets from Pure Oil Company

---

8-20-2021

**MGRRE\_PureOilScoutTickets\_WOODROW,  
DEWEY\_1\_21049108510000**

MGRRE

*Western Michigan University*

Follow this and additional works at: <https://scholarworks.wmich.edu/pure>



Part of the Geology Commons

---

#### **WMU ScholarWorks Citation**

MGRRE, "MGRRE\_PureOilScoutTickets\_WOODROW, DEWEY\_1\_21049108510000" (2021). *Legacy Scout Tickets from Pure Oil Company*. 1651.

<https://scholarworks.wmich.edu/pure/1651>

This Document is brought to you for free and open access via ScholarWorks at WMU. It has been accepted for inclusion in Legacy Scout Tickets from Pure Oil Company by an authorized administrator of ScholarWorks at WMU. See the National Digital Catalogue - Science Base Catalogue for more collections submitted by MGRRE.



---

**MGRRE\_PureOilScoutTickets\_WOODROW, DEWEY\_1\_21049108510000**

API 21049108510000

Permit Number 10851

Lease Name WOODROW, DEWEY

Well Number 1

County Genesee

Township 9N

Range 8E

Section 12

2021 DEQ or Pure co\_name HEINIG HUGH H

Pure Number 28

Latitude 43.19779

Longitude -83.47903

THE PURE OIL COMPANY

LOCATION REPORT

Date June 15, 1944 A.F.E. No. \_\_\_\_\_

Division Mich. Producing District \_\_\_\_\_ Lease Dewey Woodrow

Acres \_\_\_\_\_ Lease No. \_\_\_\_\_ Elevation \_\_\_\_\_ Well No. 1 (Serial No. 28)

Quadrangle NW-SW-SW Sec. 12 Twp. 9 N Rge. 8 E ~~28~~ Forest

Survey \_\_\_\_\_ County Genesee State Michigan

Operator Hugh H. Heinig Map Forest Township, Genesee Co.

330 330 Feet from North Line of Lease

“ “ East “ “ “

“ “ South “ “ “

330 330 “ “ West “ “ “

Feet from North Line of Section

“ “ East “ “ “

990 990 “ “ South 1/4 “

330 330 “ “ West “ “ “

LEGEND

○ Location

☀ Gas Well

● Oil Well

☀ Gas - Distillate Well

○ or ○ Dry Hole

● Dry Showing Oil

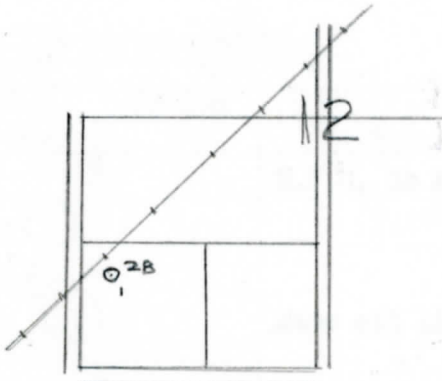
☀ Dry Showing Gas

⊗ Abandoned Location

☀ or ☀ Abandoned Gas Well

● or ● Abandoned Oil Well

⊗ or ⊗ Input Well



Scale \_\_\_\_\_

Remarks: \_\_\_\_\_  
\_\_\_\_\_  
\_\_\_\_\_

Submitted by PN Civil Engineer

Approved by \_\_\_\_\_ Division Manager

Approved by \_\_\_\_\_ Vice-President - General Manager

COMPLETION RECORD OF WELLS DRILLED BY OTHER OPERATORS

Michigan Producing Division

Date April 11, 1945 No. 28  
 State Mich. County Genesee Twp. Forest Sec. 12 Twp. 9 N Rge. 8 E  
 Well No. 1 (~~xxxxxxx~~) 28 Farm Dewey Woodrow Acres  
 Operator Hugh H. Heinig Information secured ~~xxxx~~ Scouting Department  
 Date well started 6-17-44 Date well completed 3-27-45 Elevation 860.6

PRODUCTION BOARD

1st 24 hours natural Dry Hole  
 2nd 24 hours natural  
 Date of shot No. of quarts From To From to  
 Date of acid No. of gallons  
 1st 24 hours after acid shot  
 2nd 24 hours after acid shot

FORMATION AND CASING RECORD

Formation	Top	Bottom	Top Pay	Bottom Pay	Remarks	Casing	
						Size	Set at
Marshall	225	(+636)			H.F.W. in Marshall.	10"	191
Coldw. Red Rock	704	718	(+157)		(+636)	8-1/4"	515
Sunbury	1446	SOM.	(-585)			6-5/8"	1484
Berea	1485	SLM	(-624)		Show oil 1485-1493.	5-3/16"	1650 Out
Antrim	1733	(-872)			(-624)	"	2165
Traverse Line	1939	(-1078)			Small show gas and 1100 ft. S.W. in 12 hrs. at 2011. (-1150)		
Dundee	2433	SLM.	(-1572)		Very small show oil 600 ft. Salt water	2550-2556. (-1689)	2665-2670. (-1804)
Total Depth		2674	(-1813)				

Remarks Shot Beria 8-17-44 with 40 qts. from 1485-1500 and recovered 200 ft. oil in hole-pumped 16 bbls. oil and 30 bbls. salt water per day after shot.

1495' eq. 1490' SOM; 1508' eq. 1505' SLM; 2420' eq. 2419' SLM.

Signed D. C. Shackelford