



Western Michigan University  
ScholarWorks at WMU

---

Legacy Scout Tickets from Pure Oil Company

---

8-20-2021

**MGRRE\_PureOilScoutTickets\_ALVORD, LEONARD HARRIS, HUGH  
COMM\_1\_21049110850000**

MGRRE

*Western Michigan University*

Follow this and additional works at: <https://scholarworks.wmich.edu/pure>



Part of the Geology Commons

---

#### WMU ScholarWorks Citation

MGRRE, "MGRRE\_PureOilScoutTickets\_ALVORD, LEONARD HARRIS, HUGH COMM\_1\_21049110850000" (2021). *Legacy Scout Tickets from Pure Oil Company*. 1654.

<https://scholarworks.wmich.edu/pure/1654>

This Document is brought to you for free and open access via ScholarWorks at WMU. It has been accepted for inclusion in Legacy Scout Tickets from Pure Oil Company by an authorized administrator of ScholarWorks at WMU. See the National Digital Catalogue - Science Base Catalogue for more collections submitted by MGRRE.



---

**MGRRE\_PureOilScoutTickets\_ALVORD, LEONARD HARRIS, HUGH  
COMM\_1\_21049110850000**

API 21049110850000

Permit Number 11085

Lease Name ALVORD, LEONARD HARRIS, HUGH COMM

Well Number 1

County Genesee

Township 9N

Range 8E

Section 6

2021 DEQ or Pure co\_name MAMMOTH PRODUCING CORP

Pure Number 31

Latitude 43.2173

Longitude -83.5695

# THE PURE OIL COMPANY

## LOCATION REPORT

Date September 27, 1944 A.F.E. No. \_\_\_\_\_ (Comm.)

Division Mich. Producing District \_\_\_\_\_ Lease Leonard Alvord & Hugh Harris Comm.

Acres \_\_\_\_\_ Lease No. \_\_\_\_\_ Elevation \_\_\_\_\_ Well No. 1 (Serial No. 31)

Quadrangle SW-SW-NE Sec. 6 Twp. 9N Rge. 8E Twp. Forest

Survey \_\_\_\_\_ County Genesee State Michigan

Operator Mammoth Prod. Corp. Map Forest twp. Genesee Co.

Feet from North Line of Lease

		“	“	East	“	“	“
<u>330</u>	<u>330</u>	“	“	South	“	“	“
<u>330</u>	<u>330</u>	“	“	West	“	“	“

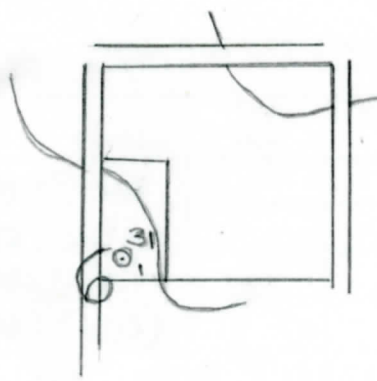
Feet from North Line of Section

		“	“	East	“	“	“
<u>330</u>	<u>330</u>	“	“	South	<u>1/4</u>	“	“
<u>330</u>	<u>330</u>	“	“	West	“	“	“

### LEGEND

- ☀ Gas Well
- Oil Well
- ☀ Gas - Distillate Well
- ∅ or ○ Dry Hole
- Dry Showing Oil
- Location
- ☀ Dry Showing Gas
- ∅ Abandoned Location
- ☀ or ☀ Abandoned Gas Well
- or ● Abandoned Oil Well
- or ○ Input Well

*map*



Scale \_\_\_\_\_

Remarks: \_\_\_\_\_

Submitted by RW \_\_\_\_\_  
Civil Engineer

Approved by \_\_\_\_\_  
Division Manager

Approved by \_\_\_\_\_  
Vice-President - General Manager

COMPLETION RECORD OF WELLS DRILLED BY OTHER OPERATORS

Michigan Producing Division

Date **November 8, 1944** No. **31**  
 State **Mich.** County **Genesee** ~~State~~ Twp. **Forest** Sec. **6** Twp. **9 N** Rge. **8 E**  
 Well No. **1** (Serial No.) ~~31~~ Farm **Alvord & Harris Comm.** Acres  
 Operator **Mammoth Producing Corp.** Information secured by ~~Scout~~ **Scouting Department**  
 Date well started **10-8-44** Date well completed **11-2-44** Elevation **775.6**

PRODUCTION BOARD

1st 24 hours natural **Dry Hole**  
 2nd 24 hours natural  
 Date of shot No. of quarts From To From to  
 Date of acid No. of gallons  
 1st 24 hours after acid shot  
 2nd 24 hours after acid shot

FORMATION AND CASING RECORD

Formation	Top	Bottom	Top Pay	Bottom Pay	Remarks	Casing	
						Size	Set at
Marshall	229	440				10"	175
Berea	1450	(-673)			700 ft. S.W. 1495.	8-1/4"	576
Antrim	1665	(-898)			(-718)	6-5/8"	1628
Traverse Lime	1890	(-1113)			Smell gas and 2 ba. S.W. per hr. 1960-65.	5-3/16"	2475
Dundee	2385	(-1408)			Water 2595. (-1818)		
Total Depth		2600		(-1823)			

Remarks

Signed **D. C. Shackelford**