



Western Michigan University
ScholarWorks at WMU

Legacy Scout Tickets from Pure Oil Company

8-20-2021

MGRRE_PureOilScoutTickets_WINT, ARLIE_1_21049122870000

MGRRE

Western Michigan University

Follow this and additional works at: <https://scholarworks.wmich.edu/pure>



Part of the Geology Commons

WMU ScholarWorks Citation

MGRRE, "MGRRE_PureOilScoutTickets_WINT, ARLIE_1_21049122870000" (2021). *Legacy Scout Tickets from Pure Oil Company*. 1658.

<https://scholarworks.wmich.edu/pure/1658>

This Document is brought to you for free and open access via ScholarWorks at WMU. It has been accepted for inclusion in Legacy Scout Tickets from Pure Oil Company by an authorized administrator of ScholarWorks at WMU. See the National Digital Catalogue - Science Base Catalogue for more collections submitted by MGRRE.



MGRRE_PureOilScoutTickets_WINT, ARLIE_1_21049122870000

API 21049122870000

Permit Number 12287

Lease Name WINT, ARLIE

Well Number 1

County Genesee

Township 9N

Range 8E

Section 12

2021 DEQ or Pure co_name MIDSTATE EMPLOYMENT SERVICES LLC

Pure Number 35

Latitude 43.1959077

Longitude -83.4691462

THE PURE OIL COMPANY

LOCATION REPORT

Date May 8, 1946

A.F.E. No. _____

Division Mich. Producing District _____

Lease Archie Wint
Archie Wint

Acres _____ Lease No. _____

Elevation _____ Well No. 1 (Serial No. 35)

Quadrangle SW-SW-SE Sec. 12

Twp. 9 N Rge. 8 E ~~SW~~ ~~SE~~ Forest

Survey _____ County Genesee State Michigan

Operator Hugh H. Heinig Map Forest Township, Genesee County

Feet from North Line of Lease

_____	_____	East	_____
<u>330</u>	<u>330</u>	South	_____
<u>330</u>	<u>330</u>	West	_____

Feet from North Line of Section

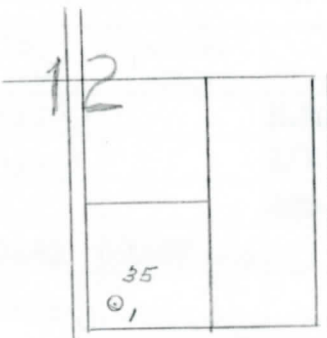
_____	_____	East	_____
<u>330</u>	<u>330</u>	South	<u>1/4</u>
<u>330</u>	<u>330</u>	West	_____

LEGEND

○ Location

- ☀ Gas Well
- Oil Well
- ☀ Gas - Distillate Well
- ⊙ or ○ Dry Hole
- Dry Showing Oil
- ☀ Dry Showing Gas
- ⊙ Abandoned Location
- ☀ or ☀ Abandoned Gas Well
- or ● Abandoned Oil Well
- or ○ Input Well

Handwritten initials



Scale _____

Remarks: _____

Submitted by CB Civil Engineer

Approved by _____ Division Manager

Approved by _____ Vice-President - General Manager

July 8 1946

LOCATION BEBOBI

A'E'E' NO'

COMPLETION RECORD OF WELLS DRILLED BY OTHER OPERATORS

Michigan Producing Division

Date July 17, 1946 No. 35
State Mich. Co. Genesee Twp. Forest Sec. 12 Twp. 9 N Rge. 8 E
Well No. 1 Serial No. 35 Farm Arlie Wint Acres
Operator Hugh H. Heinig
Date started 5-14-46 Date completed 6-12-46 Elevation 853.9

PRODUCTION RECORD

1st 24 hours natural Filled up 100 ft.
Date of shot 6-14-46 No. of quarts 40 From ? To 1493 From To
Date of acid No. of gallons
1st 24 hours after shot ~~XXXX~~ Pumped 10 Bbls.
Completed as: Oil Well X Gas Well Dry Hole

FORMATION AND CASING RECORD

Table with 7 columns: Formation, Top, Bottom, Top Pay, Bottom Pay, Remarks, Casing (Size, Set at). Rows include Marshall, Sunbury, Berea, and Total Depth.

Remarks 4 1/2 bailers salt water per day in Coldwater.
1474' equals 1470' S.L.M.

Signed D. C. Shackelford