



Western Michigan University  
ScholarWorks at WMU

---

Legacy Scout Tickets from Pure Oil Company

---

8-20-2021

**MGRRE\_PureOilScoutTickets\_REEVES, A W\_1\_21049125760000**

MGRRE

*Western Michigan University*

Follow this and additional works at: <https://scholarworks.wmich.edu/pure>



Part of the Geology Commons

---

#### **WMU ScholarWorks Citation**

MGRRE, "MGRRE\_PureOilScoutTickets\_REEVES, A W\_1\_21049125760000" (2021). *Legacy Scout Tickets from Pure Oil Company*. 1661.

<https://scholarworks.wmich.edu/pure/1661>

This Document is brought to you for free and open access via ScholarWorks at WMU. It has been accepted for inclusion in Legacy Scout Tickets from Pure Oil Company by an authorized administrator of ScholarWorks at WMU. See the National Digital Catalogue - Science Base Catalogue for more collections submitted by MGRRE.



---

**MGRRE\_PureOilScoutTickets\_REEVES, A W\_1\_21049125760000**

API 21049125760000

Permit Number 12576

Lease Name REEVES, A W

Well Number 1

County Genesee

Township 9N

Range 8E

Section 12

2021 DEQ or Pure co\_name MIDSTATE EMPLOYMENT SERVICES LLC

Pure Number 38

Latitude 43.2031851

Longitude -83.4792033

THE PURE OIL COMPANY

LOCATION REPORT

Date September 5, 1946 A.F.E. No. \_\_\_\_\_

Division Mich. Producing District \_\_\_\_\_ Lease A. W. Reeves

Acres \_\_\_\_\_ Lease No. \_\_\_\_\_ Elevation \_\_\_\_\_ Well No. 1 (Serial No. 38)

Quadrangle SW-SW-NW Sec. 12 Twp. 9 N Rge. 8 E Twp. Forest

Survey \_\_\_\_\_ County Genesee State Michigan

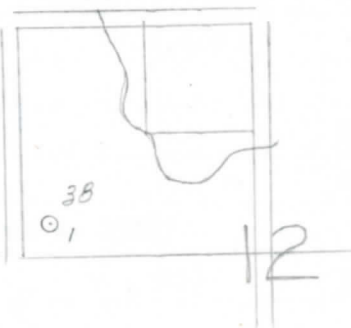
Operator E. Edwin Brehm Map Forest Township, Genesee County

Feet from North Line of Lease			
_____	_____	East	_____
<u>330</u>	<u>330</u>	South	_____
<u>330</u>	<u>330</u>	West	_____
Feet from North Line of Section			
_____	_____	East	_____
<u>330</u>	<u>330</u>	South	<u>1/4</u>
<u>330</u>	<u>330</u>	West	_____

LEGEND

- Location
- ☀ Gas Well
- Oil Well
- ☀ Gas - Distillate Well
- or ○ Dry Hole
- Dry Showing Oil
- ☀ Dry Showing Gas
- ⊗ Abandoned Location
- ☀ or ☀ Abandoned Gas Well
- or ● Abandoned Oil Well
- or ○ Input Well

*Brehm*



Scale \_\_\_\_\_

Remarks: \_\_\_\_\_

Submitted by CB Civil Engineer Approved by \_\_\_\_\_ Division Manager

Approved by \_\_\_\_\_ Vice-President - General Manager

