



Western Michigan University
ScholarWorks at WMU

Legacy Scout Tickets from Pure Oil Company

8-20-2021

MGRRE_PureOilScoutTickets_REEVES_2_21049127470000

MGRRE

Western Michigan University

Follow this and additional works at: <https://scholarworks.wmich.edu/pure>



Part of the Geology Commons

WMU ScholarWorks Citation

MGRRE, "MGRRE_PureOilScoutTickets_REEVES_2_21049127470000" (2021). *Legacy Scout Tickets from Pure Oil Company*. 1662.

<https://scholarworks.wmich.edu/pure/1662>

This Document is brought to you for free and open access via ScholarWorks at WMU. It has been accepted for inclusion in Legacy Scout Tickets from Pure Oil Company by an authorized administrator of ScholarWorks at WMU. See the National Digital Catalogue - Science Base Catalogue for more collections submitted by MGRRE.



MGRRE_PureOilScoutTickets_REEVES_2_21049127470000

API 21049127470000

Permit Number 12747

Lease Name REEVES

Well Number 2

County Genesee

Township 9N

Range 8E

Section 12

2021 DEQ or Pure co_name MIDSTATE EMPLOYMENT SERVICES LLC

Pure Number 39

Latitude 43.2031022

Longitude -83.4766626

THE PURE OIL COMPANY

LOCATION REPORT

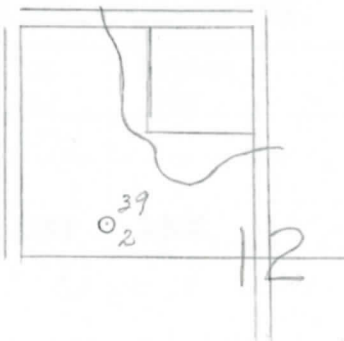
Date November 6, 1946 A.F.E. No. _____
 Division Mich. Producing District _____ Lease Reeves
 Acres _____ Lease No. _____ Elevation _____ Well No. 2 (Serial No. 39)
 Quadrangle SE SW NW Sec. 12 Twp. 9 N Rge. 8 E ~~Forest~~ Forest
 Survey _____ County Genesee State Michigan
 Operator E. Edwin Brehm Map Forest Township, Genesee County

Feet from North Line of Lease					
		"	"	East	" " "
<u>330</u>	<u>330</u>	"	"	South	" " "
<u>990</u>	<u>990</u>	"	"	West	" " "
Feet from North Line of Section					
		"	"	East	" " "
<u>330</u>	<u>330</u>	"	"	South	" <u>1/4</u> "
<u>990</u>	<u>990</u>	"	"	West	" " "

Low

LEGEND

- Location
- ☀ Gas Well
- Oil Well
- ☀ Gas - Distillate Well
- ∅ or ○ Dry Hole
- Dry Showing Oil
- ☀ Dry Showing Gas
- ⊗ Abandoned Location
- ☀ or ⊗ Abandoned Gas Well
- or ⊗ Abandoned Oil Well
- or ○ Input Well



Remarks: _____

Scale _____

Submitted by CB Civil Engineer Approved by _____ Division Manager
 Approved by _____ Vice-President - General Manager

COMPLETION RECORD OF WELLS DRILLED BY OTHER OPERATORS

Michigan Producing DIVISION

Date December 31, 1946 No. 39
 State Mich. Co. Genesee Dist. SE-SW-NW
 Twp. Forest Sec. 12 Twp. 9 N Rge. 8 E
 Well No. 2 Serial No. 39 Farm Reeves Acres _____
 Operator E. Edwin Brehm
 Date started 11-12-46 Date completed 12-2-46 Elevation 856.5

PRODUCTION RECORD

1st 24 hours natural None
 Date of shot 12-4-46 No. of quarts 35 From _____ To _____
 Date of acid _____ No. of gallons shot _____
 1st 24 hours after ~~shot~~ 8 Barrels
 Completed as: Oil Well Gas Well _____ Dry Hole _____

FORMATION AND CASING RECORD

Formation	Top	Bottom	Top Pay	Bottom Pay	Remarks	Casing	
						Size	Set at
Marshall	300	472	(1551)			10"	194
Sunbury	1456	(1599)				8-1/4"	480
Berea	1498	(1641)	1499	1502	(1642)	5-3/16"	1509
Total Depth		1510	(1653)				

Remarks _____

Signed Harry J. Gaspeny