



Western Michigan University
ScholarWorks at WMU

Legacy Scout Tickets from Pure Oil Company

8-20-2021

**MGRRE_PureOilScoutTickets_BARDWELL,
CHARLES_1_21051032190000**

MGRRE

Western Michigan University

Follow this and additional works at: <https://scholarworks.wmich.edu/pure>



Part of the Geology Commons

WMU ScholarWorks Citation

MGRRE, "MGRRE_PureOilScoutTickets_BARDWELL, CHARLES_1_21051032190000" (2021). *Legacy Scout Tickets from Pure Oil Company*. 1709.

<https://scholarworks.wmich.edu/pure/1709>

This Document is brought to you for free and open access via ScholarWorks at WMU. It has been accepted for inclusion in Legacy Scout Tickets from Pure Oil Company by an authorized administrator of ScholarWorks at WMU. See the National Digital Catalogue - Science Base Catalogue for more collections submitted by MGRRE.



MGRRE_PureOilScoutTickets_BARDWELL, CHARLES_1_21051032190000

API 21051032190000

Permit Number 3219

Lease Name BARDWELL, CHARLES

Well Number 1

County Gladwin

Township 17N

Range 2W

Section 3

2021 DEQ or Pure co_name WHITEHILL M F SR

Pure Number 34

Latitude 43.89337

Longitude -84.52643

DATE April 30, 1936

LOCATION REPORT

No. 34

STATE Michigan COUNTY Gladwin DIST. Beaverton TWP. Beaverton SEC. 3 TOWN 17N RANGE 3W

WELL No. 1 (SERIAL No. 384) FARM Charles Bardwell ACRES

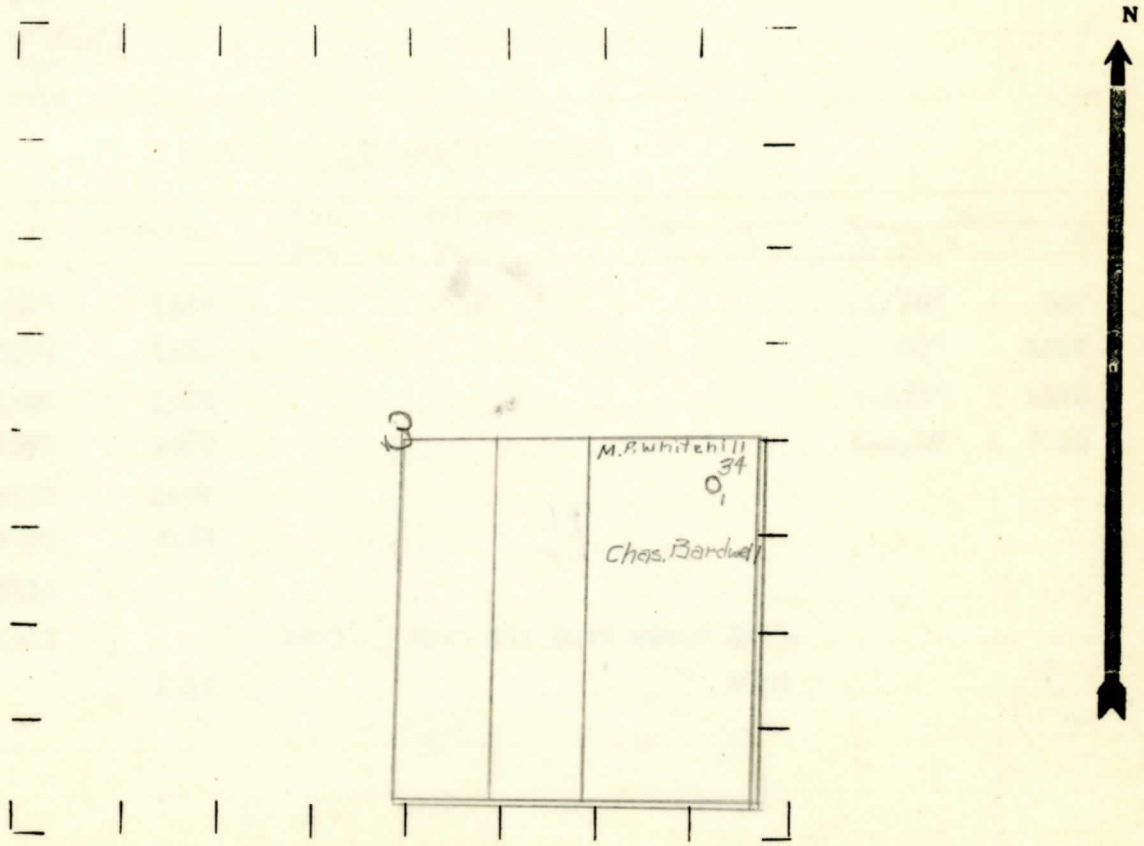
NAME OF STREAM OR WATERS QUADRANGLE NE-NE-SE

OPERATOR M. F. Whitehill Map Beaverton Township, Gladwin County

330 330 Feet from North Line of Farm
330 330 " " East " " "
" " South " " "
" " West " " "
330 330 Feet from North Line of Section
330 330 " " East " " "
" " South " " "
" " West " " "

- LEGEND
O LOCATION
D RIG
DRILLING
GAS WELL
OIL WELL
SMALL OIL WELL
DRY HOLE
DRY SHOWING OIL
DRY SHOWING GAS
ABANDONED LOCATION
ABANDONED GAS WELL
ABANDONED OIL WELL

NOTE: Below make tracing from map, (when no map is obtainable make sketch) showing farm, center of section, this location with measurements and also wells, dry holes, or other locations in the vicinity of this location.



REMARKS:

SIGNED P. J. [Signature] Superintendent or Foreman.

Michigan Producing Division

Date **August 13, 1936** No. **34**
 State **Michigan** County **Gladwin** Dist. Twp. **Beaverton** Sec. **3** Twp. **17 N** Rge. **2 W**
 Well No. **1** (Serial No.) (County No.) **34** Farm **Charles Bardwell** Acres
 Operator **M. F. Whitehill** Information secured ~~from~~ **Scouting Department**
 Date well started **6-22-36** Date well completed **8-11-36** Elevation **740.8**

PRODUCTION RECORD

1st 24 hours natural **Dry Hole**
 2nd 24 hours natural
 Date of shot No. of quarts From to From to
 Date of acid No. of gallons
 1st 24 hours after acid shot
 2nd 24 hours after acid shot

FORMATION AND CASING RECORD

Formation	Top	Bottom	Top Pay	Bottom Pay	Remarks	Casing	
						Size	Set At
Marshall	1355	1475				10"	307
Red Rock	1475	1530				8 1/2"	1010
Red Rock	1545	1565				6-5/8"	1570
Sunbury	2575	2620				5-3/16"	3850
Berea	2620	2635					
Antrim	2700	3155					
Traverse	3155						
Dundee	3846		3900		Show oil Salt water 3912-		
Total Depth		3916			3916		

Remarks **Two bailers salt water per hour 3310 - show oil 3900 - filled up 165' over night.**

Signed _____