



Western Michigan University  
ScholarWorks at WMU

---

Legacy Scout Tickets from Pure Oil Company

---

8-20-2021

**MGRRE\_PureOilScoutTickets\_BARNES, L. M.\_1\_21051034450000**

MGRRE

*Western Michigan University*

Follow this and additional works at: <https://scholarworks.wmich.edu/pure>



Part of the Geology Commons

---

#### **WMU ScholarWorks Citation**

MGRRE, "MGRRE\_PureOilScoutTickets\_BARNES, L. M.\_1\_21051034450000" (2021). *Legacy Scout Tickets from Pure Oil Company*. 1716.

<https://scholarworks.wmich.edu/pure/1716>

This Document is brought to you for free and open access via ScholarWorks at WMU. It has been accepted for inclusion in Legacy Scout Tickets from Pure Oil Company by an authorized administrator of ScholarWorks at WMU. See the National Digital Catalogue - Science Base Catalogue for more collections submitted by MGRRE.



---

**MGRRE\_PureOilScoutTickets\_BARNES, L. M.\_1\_21051034450000**

API 21051034450000

Permit Number 3445

Lease Name BARNES, L. M.

Well Number 1

County Gladwin

Township 20N

Range 1W

Section 22

2021 DEQ or Pure co\_name OLYMPIA OIL AND GAS

Pure Number 41

Latitude 44.11607

Longitude -84.42557

The Pure Oil Company  
THE PURE OIL COMPANY

DATE July 30, 1936

LOCATION REPORT

No. 41

STATE Michigan COUNTY Gladwin DIST. Butman TWP. Butman SEC. 22 TOWN 20 N RANGE 1 W

WELL No. 1 (SERIAL No. 41) FARM L. M. Barnes ACRES NW NW NW

NAME OF STREAM OR WATERS \_\_\_\_\_ QUADRANGLE NW NW NW

OPERATOR Olympia Oil and Gas Company Map Butman Township, Gladwin County

330 330 Feet from North Line of Farm

Butman - Gladwin

837.9

\_\_\_\_\_ " " East " " "

380

\_\_\_\_\_ " " South " " "

10" 321

330 330 " " West " " "

sp 7-23-36

330 330 Feet from North Line of Section

\_\_\_\_\_ " " East " " "

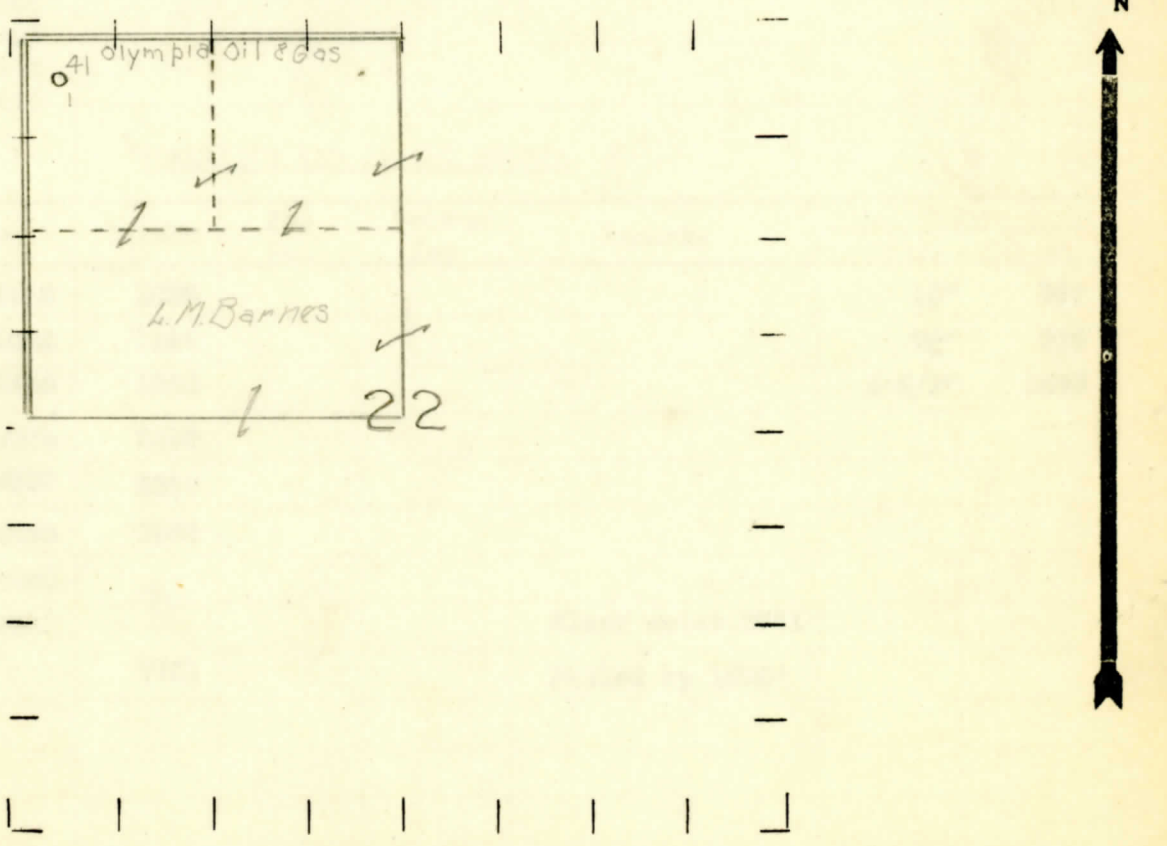
\_\_\_\_\_ " " South " " "

330 330 " " West " " "

LEGEND

- LOCATION
- ⊕ DRILLING
- ⊗ GAS WELL
- OIL WELL
- ⊖ SMALL OIL WELL
- ⊖ DRY HOLE
- ⊖ DRY SHOWING OIL
- ⊖ DRY SHOWING GAS
- ⊖ ABANDONED LOCATION
- ⊖ ABANDONED GAS WELL
- ⊖ ABANDONED OIL WELL

NOTE: Below make tracing from map, (when no map is obtainable make sketch) showing farm, center of section, this location with measurements and also wells, dry holes, or other locations in the vicinity of this location.



REMARKS: \_\_\_\_\_

SIGNED

R. L. Yag  
Superintendent or Foreman.



COMPLETION RECORD OF WELLS DRILLED BY OTHER OPERATORS

Michigan Producing Division

Date **October 8, 1936** No. **41**  
 State **Michigan** County **Gladwin** Dist. **Butman** Twp. **22** Sec. **20 N** Twp. **1 W**  
 Well No. **1** (Serial No.) **41** (County No.) Farm **L. M. Barnes** Acres  
 Operator **Olympia Oil & Gas Company** Information secured from ~~XXXX~~ **Scouting Department** by  
 Date well started **7-23-36** Date well completed **10-6-36** Elevation **837.9**

PRODUCTION RECORD

1st 24 hours natural **Dry Hole**  
 2nd 24 hours natural  
 Date of shot No. of quarts From to From to  
 Date of acid No. of gallons  
 1st 24 hours after acid shot  
 2nd 24 hours after acid shot

FORMATION AND CASING RECORD

Formation	Top	Bottom	Top Pay	Bottom Pay	Remarks	Casing	
						Size	Set At
Stray	1018	1028				10"	327
Marshall	1093	1188				8 1/4"	676
Red Rock	1188	1260				6-5/8"	1295
Sunbury	2295	2320					
Berea	2320	2395					
Antrim	2395	2880					
Traverse	2880						
Dundee	3665				Black water 3761		
Total Depth		3761			Filled up 1300'		

Remarks

Signed *G. W. Beech*