



Western Michigan University  
ScholarWorks at WMU

---

Legacy Scout Tickets from Pure Oil Company

---

8-20-2021

**MGRRE\_PureOilScoutTickets\_HALL\_2\_21051040530000**

MGRRE

*Western Michigan University*

Follow this and additional works at: <https://scholarworks.wmich.edu/pure>



Part of the Geology Commons

---

#### WMU ScholarWorks Citation

MGRRE, "MGRRE\_PureOilScoutTickets\_HALL\_2\_21051040530000" (2021). *Legacy Scout Tickets from Pure Oil Company*. 1875.

<https://scholarworks.wmich.edu/pure/1875>

This Document is brought to you for free and open access via ScholarWorks at WMU. It has been accepted for inclusion in Legacy Scout Tickets from Pure Oil Company by an authorized administrator of ScholarWorks at WMU. See the National Digital Catalogue - Science Base Catalogue for more collections submitted by MGRRE.



---

**MGRRE\_PureOilScoutTickets\_HALL\_2\_21051040530000**

API 21051040530000

Permit Number 4053

Lease Name HALL

Well Number 2

County Gladwin

Township 18N

Range 1W

Section 35

2021 DEQ or Pure co\_name SUMMIT PETROLEUM CORP

Pure Number 201

Latitude 43.9142237

Longitude -84.3869352

THE PURE OIL COMPANY

DATE April 22, 1937

LOCATION REPORT

No. 201

STATE Michigan

COUNTY Gladwin

DIST. Buckeye  
TWP. Buckeye

SEC. 35

TOWN 18 N

RANGE 1 W

WELL No. 2 (SERIAL No. 201) FARM

PREC. W. B. Hall

ACRES

NAME OF STREAM OR WATERS

QUADRANGLE NE-NE-NE  
NE NE NE

OPERATOR Rex Oil & Gas Company

Map Buckeye Township, Gladwin County

330 330 Feet from North Line of Farm

330 330 " " East " " "

" " South " " "

" " West " " "

330 330 Feet from North Line of Section

330 330 " " East " " "

" " South " " "

" " West " " "

*80' 16 Sp 4-17-37*

LEGEND

○ LOCATION

⊙ RIG

⊕ DRILLING

☀ GAS WELL

● OIL WELL

⦿ SMALL OIL WELL

⊖ DRY HOLE

⦿ DRY SHOWING OIL

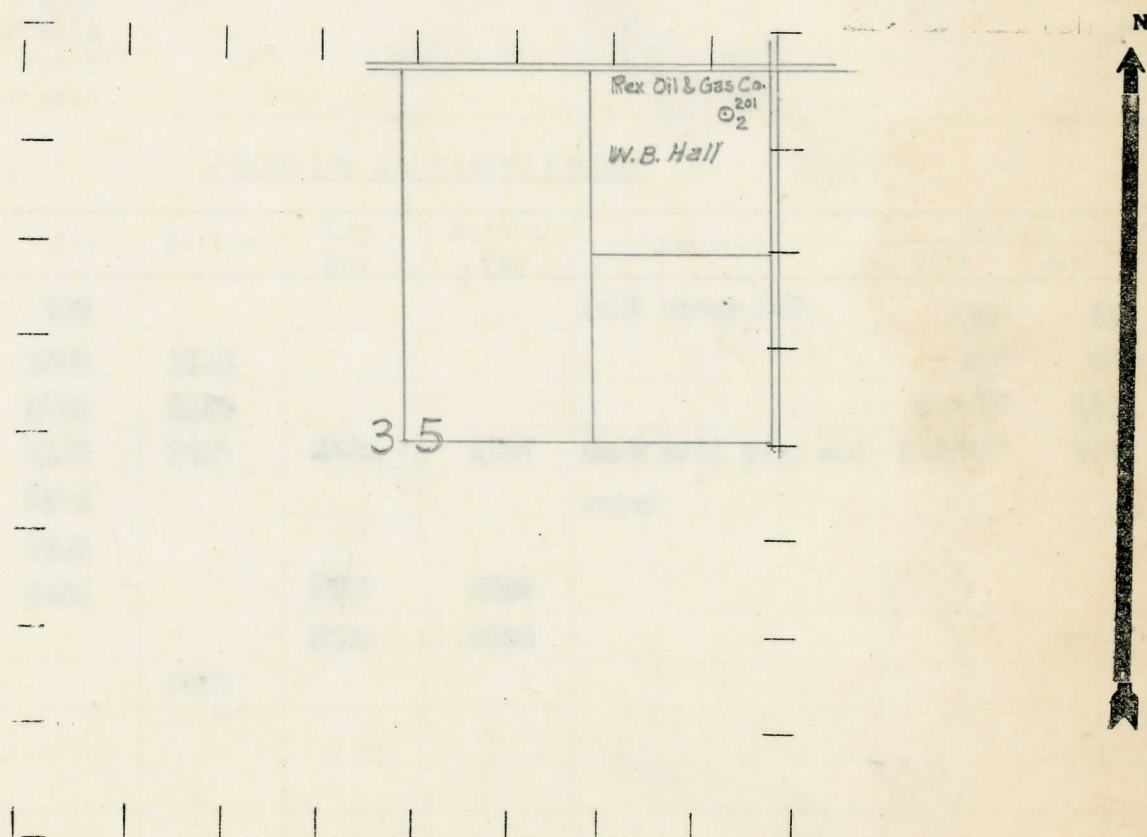
☀ DRY SHOWING GAS

⊖ ABANDONED LOCATION

☀ ABANDONED GAS WELL

⦿ ABANDONED OIL WELL

NOTE: Below make tracing from map, (when no map is obtainable make sketch) showing farm, center of section, this location with measurements and also wells, dry holes, or other locations in the vicinity of this location.



REMARKS:

SIGNED

*R. L. Yager*

Superintendent or Foreman.



COMPLETION RECORD OF WELLS DRILLED BY OTHER OPERATORS

Michigan Producing Division

Date June 10, 1937 No. 201  
 State Michigan County Gladwin Dist. \_\_\_\_\_  
 Twp. Duetoys Sec. 35 Twp. 18 N Rge. 1 W  
 Well No. 2 (Serial No.) \_\_\_\_\_  
 (County No.) 201 Farm Hall Acres \_\_\_\_\_  
 Operator Rox Oil & Gas Company Information secured by ~~from~~ Scouting Department  
 Date well started 4-17-37 Date well completed 5-28-37 Elevation 730.7

PRODUCTION RECORD

1st 24 hours natural 515 Barrels  
 2nd 24 hours natural \_\_\_\_\_  
 Date of shot \_\_\_\_\_ No. of quarts \_\_\_\_\_ From \_\_\_\_\_ to \_\_\_\_\_  
 Date of acid \_\_\_\_\_ No. of gallons \_\_\_\_\_  
 1st 24 hours after acid shot \_\_\_\_\_  
 2nd 24 hours after acid shot \_\_\_\_\_

FORMATION AND CASING RECORD

Formation	Top	Bottom	Top Pay	Bottom Pay	Remarks	Casing	
						Size	Set At
Marshall	945				Salt water 960	10"	277
Red Rock	1085	1115				8 1/4"	745
Sunbury	2160	2180				6-5/8"	1141
Berea	2180	2227	2220	2227	Show oil, gas, and	5-3/16"	3489
Antrim	2275				water		
Traverse	2742						
Dundee	3483		3559	3569			
			3601	3608			
Total Depth		3608					

Remarks \_\_\_\_\_  
 \_\_\_\_\_  
 \_\_\_\_\_

Signed Dean C. Shackelford