



Western Michigan University  
ScholarWorks at WMU

---

Legacy Scout Tickets from Pure Oil Company

---

8-20-2021

**MGRRE\_PureOilScoutTickets\_RABB, MARY\_4\_21051040580000**

MGRRE

*Western Michigan University*

Follow this and additional works at: <https://scholarworks.wmich.edu/pure>



Part of the Geology Commons

---

#### **WMU ScholarWorks Citation**

MGRRE, "MGRRE\_PureOilScoutTickets\_RABB, MARY\_4\_21051040580000" (2021). *Legacy Scout Tickets from Pure Oil Company*. 1880.

<https://scholarworks.wmich.edu/pure/1880>

This Document is brought to you for free and open access via ScholarWorks at WMU. It has been accepted for inclusion in Legacy Scout Tickets from Pure Oil Company by an authorized administrator of ScholarWorks at WMU. See the National Digital Catalogue - Science Base Catalogue for more collections submitted by MGRRE.



---

**MGRRE\_PureOilScoutTickets\_RABB, MARY\_4\_21051040580000**

API 21051040580000

Permit Number 4058

Lease Name RABB, MARY

Well Number 4

County Gladwin

Township 18N

Range 1W

Section 10

2021 DEQ or Pure co\_name T AND E INVESTMENTS CO OF MICHIGAN

Pure Number 206

Latitude 43.967015

Longitude -84.4124795

THE PURE OIL COMPANY

COMPLETION RECORD OF WELLS DRILLED BY OTHER OPERATORS

DATE April 22, 1937

LOCATION REPORT

No. 206

STATE Michigan

COUNTY Gladwin

DIST. Buckeye

TWP. Buckeye

SEC. 10

TOWN 18 N RANGE 1 W

WELL No. 4 (SERIAL No. 206) FARM

PREC. Mary Rabb

ACRES

NAME OF STREAM OR WATERS

QUADRANGLE SE-SW-NE SE SW NE

OPERATOR Sun Oil Company

Map Buckeye Township, Gladwin County

Feet from North Line of Farm

1650 1650 " " East " " "

330 330 " " South " " "

" " West " " "

Feet from North Line of Section

" " East " " "

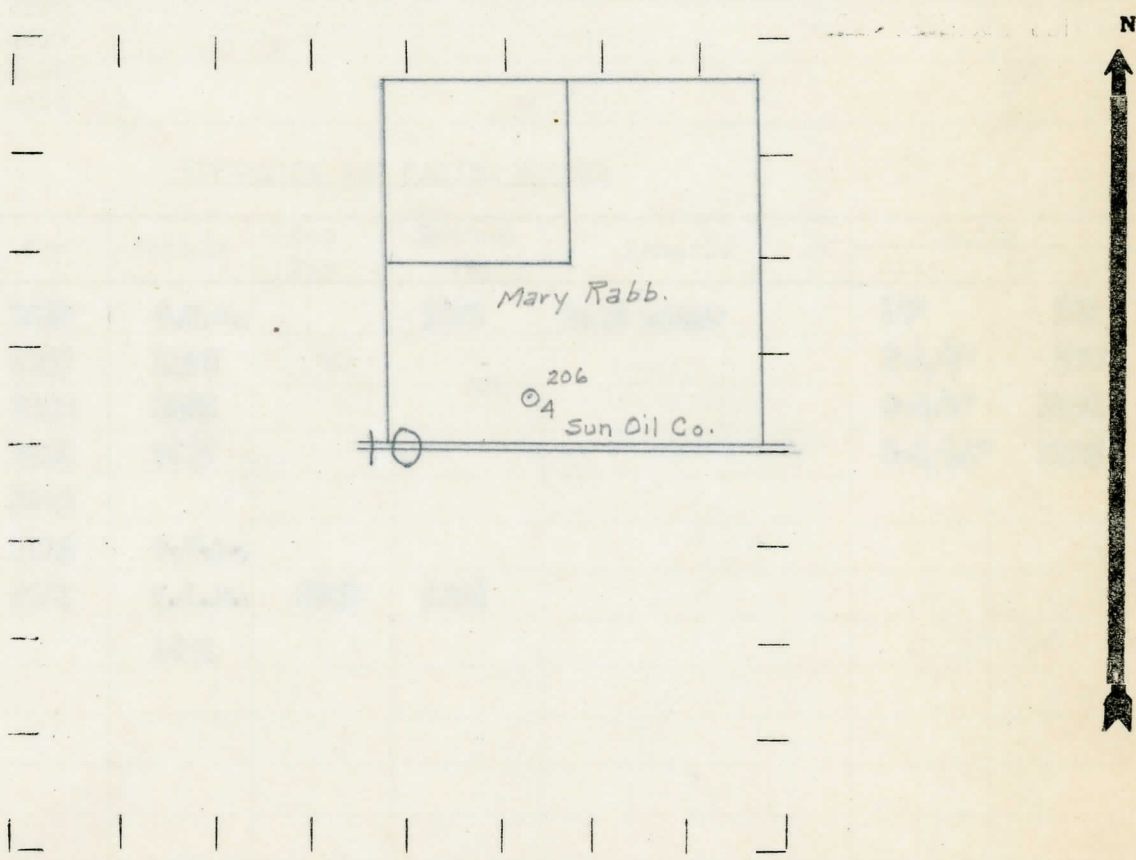
330 330 " " South " 1/4 "

990 990 " " West " 1/4 "

LEGEND

- LOCATION
- ⊕ RIG
- ⊕ DRILLING
- ☀ GAS WELL
- OIL WELL
- ⊕ SMALL OIL WELL
- ⊕ DRY HOLE
- ⊕ DRY SHOWING OIL
- ⊕ DRY SHOWING GAS
- ⊕ ABANDONED LOCATION
- ⊕ ABANDONED GAS WELL
- ⊕ ABANDONED OIL WELL

NOTE: Below make tracing from map, (when no map is obtainable make sketch) showing farm, center of section, this location with measurements and also wells, dry holes, or other locations in the vicinity of this location.



REMARKS:

SIGNED

R. L. Yeager

Superintendent or Foreman.

COMPLETION RECORD OF WELLS DRILLED BY OTHER OPERATORS

Michigan Producing Division

Date July 22, 1937 No. 206  
 State Michigan County Gladwin Dist. Buckeye  
 Twp. 10 Sec. 18 N Rge. 1 W  
 Well No. 4 (Serial No.) (County No.) 206 Farm Mary Rabb Acres \_\_\_\_\_  
 Operator Sun Oil Company Information secured by Scout Department  
 Date well started 5-19-37 Date well completed 7-13-37 Elevation 757.0

PRODUCTION RECORD

1st 24 hours natural Est. 1500 barrels  
 2nd 24 hours natural \_\_\_\_\_  
 Date of shot \_\_\_\_\_ No. of quarts \_\_\_\_\_ From \_\_\_\_\_ to \_\_\_\_\_ From \_\_\_\_\_ to \_\_\_\_\_  
 Date of acid \_\_\_\_\_ No. of gallons \_\_\_\_\_  
 1st 24 hours after acid shot \_\_\_\_\_  
 2nd 24 hours after acid shot \_\_\_\_\_

FORMATION AND CASING RECORD

Formation	Top	Bottom	Top Pay	Bottom Pay	Remarks	Casing	
						Size	Set to
Marshall	1020	C.T.M.		1048	Salt water	10"	331
Red Rock	1147	1195				8-1/4"	370
Sunbury	2220	2253				6-5/8"	1254
Berea	2253	2317				6-3/16"	3556
Antrim	2340						
Traverse	2615	C.T.M.					
Dundee	3551	S.L.M.	3608	3634			
Total Depth		3651					

Remarks \_\_\_\_\_  
 \_\_\_\_\_  
 \_\_\_\_\_

Signed D. C. Shackelford