



Western Michigan University  
ScholarWorks at WMU

---

Legacy Scout Tickets from Pure Oil Company

---

8-20-2021

**MGRRE\_PureOilScoutTickets\_STROHKIRCH  
LOUIE\_2\_21051041740000**

MGRRE

*Western Michigan University*

Follow this and additional works at: <https://scholarworks.wmich.edu/pure>



Part of the Geology Commons

---

#### **WMU ScholarWorks Citation**

MGRRE, "MGRRE\_PureOilScoutTickets\_STROHKIRCH LOUIE\_2\_21051041740000" (2021). *Legacy Scout Tickets from Pure Oil Company*. 1945.

<https://scholarworks.wmich.edu/pure/1945>

This Document is brought to you for free and open access via ScholarWorks at WMU. It has been accepted for inclusion in Legacy Scout Tickets from Pure Oil Company by an authorized administrator of ScholarWorks at WMU. See the National Digital Catalogue - Science Base Catalogue for more collections submitted by MGRRE.



---

**MGRRE\_PureOilScoutTickets\_STROHKIRCH LOUIE\_2\_21051041740000**

API 21051041740000

Permit Number 4174

Lease Name STROHKIRCH LOUIE

Well Number 2

County Gladwin

Township 18N

Range 1W

Section 3

2021 DEQ or Pure co\_name T AND E INVESTMENTS CO OF MICHIGAN

Pure Number 271

Latitude 43.97607

Longitude -84.42026

The Pure Oil Company  
THE PURE OIL COMPANY

DATE June 3, 1937

LOCATION REPORT

No. 271

STATE Michigan COUNTY Gladwin

DIST. Buckeye TWP. Buckeye SEC. 3

TOWN 18 N RANGE 1 W

WELL No. 22 (SERIAL No. 271) FARM Louie Strohkirch ACRES

NAME OF STREAM OR WATERS \_\_\_\_\_ QUADRANGLE NW-SE-SW

OPERATOR The Sun Oil Company Map Buckeye Township, Gladwin County

330 330 Feet from North Line of Farm

990 990 " " East " " "

" " South " " "

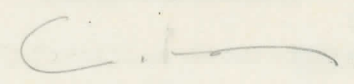
" " West " " "

Feet from North Line of Section

990 990 " " East " 1/4 "

990 990 " " South " " "

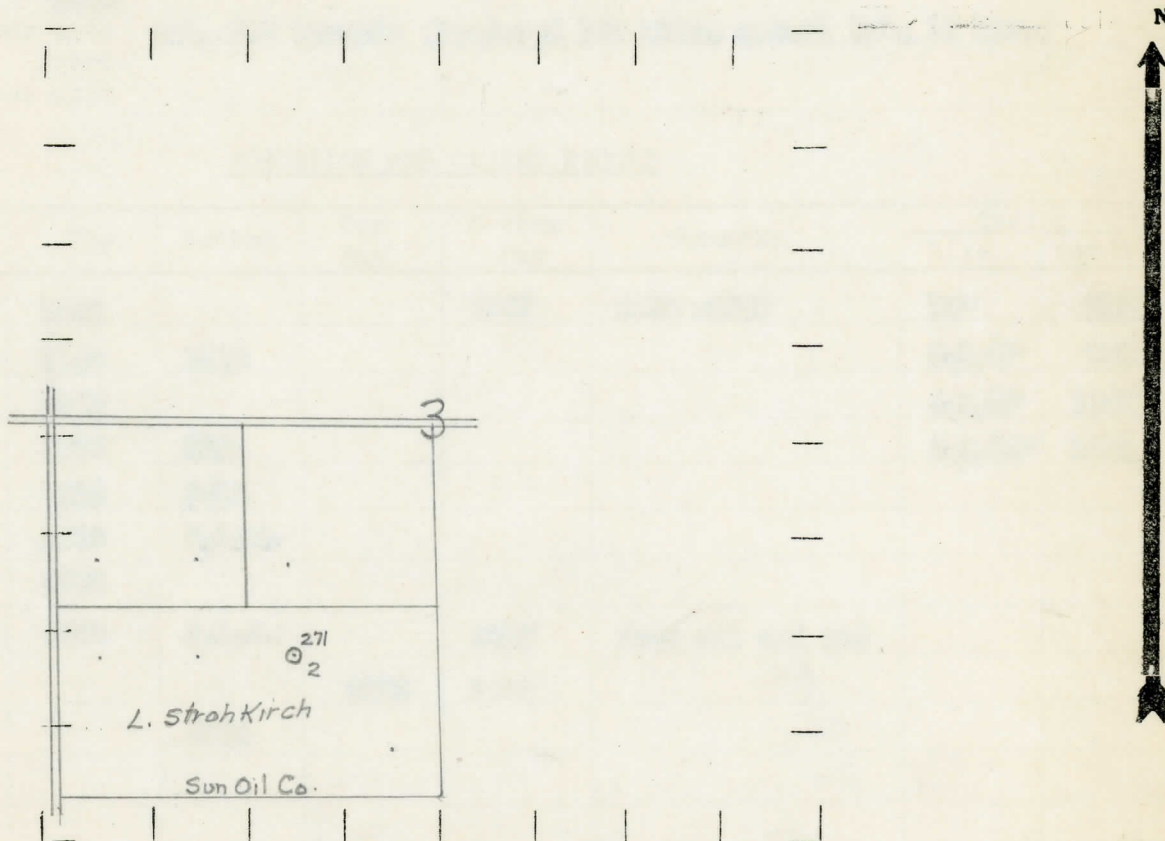
" " West " " "



LEGEND

- LOCATION
- ⊕ RIG
- ⊕ DRILLING
- ☀ GAS WELL
- OIL WELL
- SMALL OIL WELL
- ⊕ DRY HOLE
- DRY SHOWING OIL
- ☀ DRY SHOWING GAS
- ⊕ ABANDONED LOCATION
- ☀ ABANDONED GAS WELL
- ABANDONED OIL WELL

NOTE: Below make tracing from map, (when no map is obtainable make sketch) showing farm, center of section, this location with measurements and also wells, dry holes, or other locations in the vicinity of this location.



REMARKS:

SIGNED

R. L. [Signature]  
Superintendent or Foreman.

COMPLETION RECORD OF WELLS DRILLED BY OTHER OPERATORS

Michigan Producing Division

Date August 5, 1937 No. 271  
 State Michigan County Gladwin Dist. \_\_\_\_\_  
 (Serial No.) Twp. Duckeye Sec. 3 Twp. 18 N Rge. 1 W  
 Well No. 2 (County No.) 271 Farm Louie Strohkireh Acres \_\_\_\_\_  
 Operator Sun Oil Company Information secured from Scouting Department

Date well started 6-10-37 Date well completed 7-20-37 Elevation 765.2

PRODUCTION RECORD

1st 24 hours natural Filled up 3000 ft.  
 2nd 24 hours natural \_\_\_\_\_  
 Date of shot \_\_\_\_\_ No. of quarts \_\_\_\_\_ From \_\_\_\_\_ to \_\_\_\_\_ From \_\_\_\_\_ to \_\_\_\_\_  
 Date of acid 7-30-37 No. of gallons 1000  
 1st 24 hours after acid shot Est. 300 barrels (Produced 175 bbls. actual 1st. 12 hrs.)  
 2nd 24 hours after acid \_\_\_\_\_

FORMATION AND CASING RECORD

Formation	Top	Bottom	Top Pay	Bottom Pay	Remarks	Casing	
						Size	Set At
Marshall	1042			1042	Salt water	10"	208
Red Rock	1165	1210				8-1/4"	790
Sunbury	2247					6-5/8"	1240
Berea	2275	2331				5-5/16"	3564
Antrim	2355	2815					
Traverse Form.	2815	S.L.M.					
Traverse Lime	2833						
Dundee	3559	S.L.M.		3615	Show oil and gas		
			3623	3630			
Total Depth		3654					

Remarks Flowing water at 280'.

Signed D. C. Shackelford