



Western Michigan University
ScholarWorks at WMU

Legacy Scout Tickets from Pure Oil Company

8-20-2021

**MGRRE_PureOilScoutTickets_STROHKIRCH
LOUIE_3_21051041750000**

MGRRE
Western Michigan University

Follow this and additional works at: <https://scholarworks.wmich.edu/pure>



Part of the Geology Commons

WMU ScholarWorks Citation

MGRRE, "MGRRE_PureOilScoutTickets_STROHKIRCH LOUIE_3_21051041750000" (2021). *Legacy Scout Tickets from Pure Oil Company*. 1946.

<https://scholarworks.wmich.edu/pure/1946>

This Document is brought to you for free and open access via ScholarWorks at WMU. It has been accepted for inclusion in Legacy Scout Tickets from Pure Oil Company by an authorized administrator of ScholarWorks at WMU. See the National Digital Catalogue - Science Base Catalogue for more collections submitted by MGRRE.



MGRRE_PureOilScoutTickets_STROHKIRCH LOUIE_3_21051041750000

API 21051041750000

Permit Number 4175

Lease Name STROHKIRCH LOUIE

Well Number 3

County Gladwin

Township 18N

Range 1W

Section 3

2021 DEQ or Pure co_name T AND E INVESTMENTS CO OF MICHIGAN

Pure Number 272

Latitude 43.97417

Longitude -84.41775

THE PURE OIL COMPANY

LOCATION REPORT

DATE June 3, 1937

No. 272

STATE Michigan COUNTY Gladwin DIST. Buckeye TWP. Buckeye SEC. 3 TOWN 18 N RANGE 1 W

WELL No. 33 (SERIAL No. 272) FARM Louie Strohkirch ACRES

NAME OF STREAM OR WATERS QUADRANGLE SE-SE-SW

OPERATOR The Sun Oil Company Map Buckeye Township, Gladwin County

Feet from North Line of Farm

330 330 " " East " " "

330 330 " " South " " "

" " West " " "

Feet from North Line of Section

330 330 " " East 1/4 "

330 330 " " South " " "

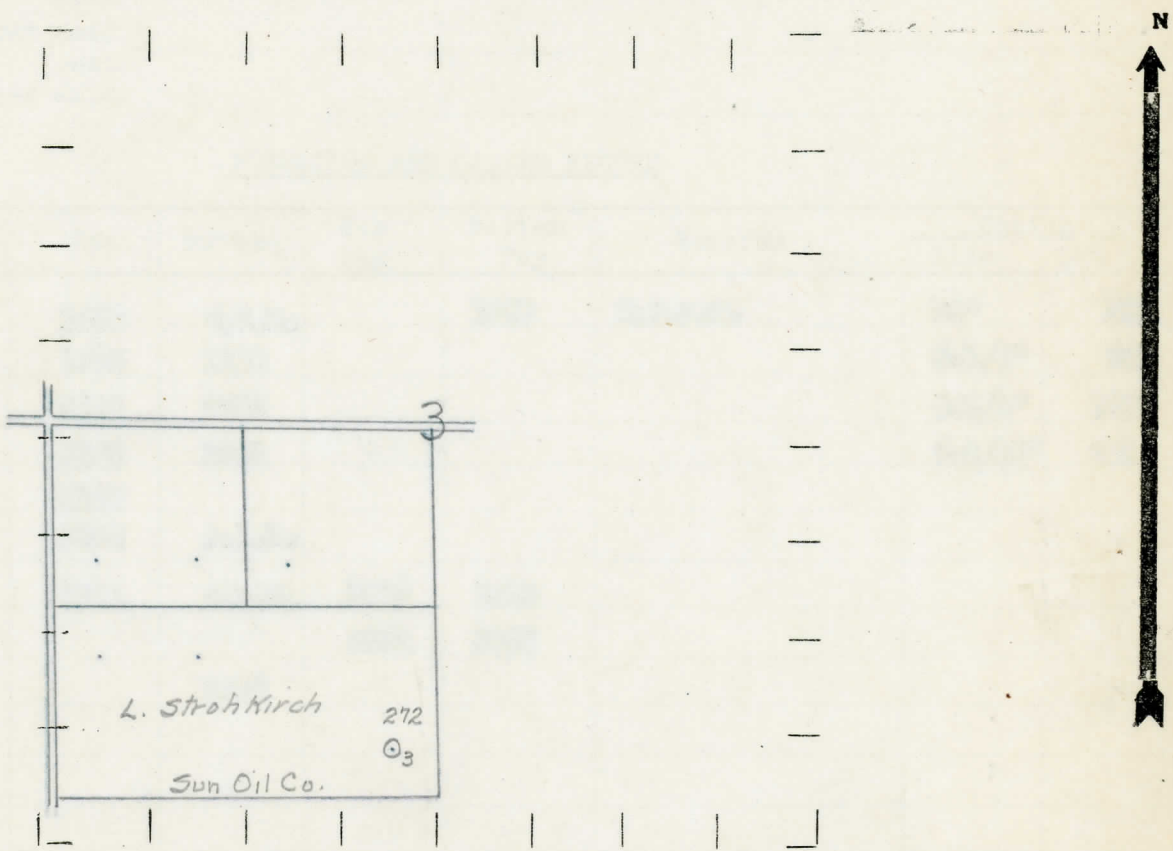
" " West " " "

Handwritten: M-84-Lp 53137

LEGEND

- LOCATION
- ⊕ RIG
- ⊕ DRILLING
- ☀ GAS WELL
- OIL WELL
- ⊕ SMALL OIL WELL
- ⊕ DRY HOLE
- ⊕ DRY SHOWING OIL
- ⊕ DRY SHOWING GAS
- ⊕ ABANDONED LOCATION
- ☀ ABANDONED GAS WELL
- ⊕ ABANDONED OIL WELL

NOTE: Below make tracing from map, (when no map is obtainable make sketch) showing farm, center of section, this location with measurements and also wells, dry holes, or other locations in the vicinity of this location.



REMARKS:

SIGNED

Handwritten signature: R. d. Young
Superintendent or Foreman.

COMPLETION RECORD OF WELLS DRILLED BY OTHER OPERATORS

Michigan Producing Division

Date July 22, 1937 No. 272
 State Michigan County Gladwin Dist. Twp. Buckeye Sec. 3 Twp. 18 N Rge. 1 W
 (Serial No.)
 Well No. 3 (County No.) 272 Farm Louis Strohkireh Acres
 Operator Sun Oil Company Information secured from Scouting Department by
 Date well started 5-31-37 Date well completed 7-15-37 Elevation 764.1

PRODUCTION RECORD

1st 24 hours natural Est. 800 barrels - .
 2nd 24 hours natural
 Date of shot No. of quarts From to From to
 Date of acid No. of gallons
 1st 24 hours after acid shot
 2nd 24 hours after acid shot

FORMATION AND CASING RECORD

Formation	Top	Bottom	Top Pay	Bottom Pay	Remarks	Casing	
						Size	Set
Marshall	1040	C.T.M.		1040	H.F.S.W.	10"	206
Red Rock	1156	1210				8-1/4"	801
Sunbury	2242	2265				6-5/8"	1243
Berea	2265	2320				5-3/16"	3557
Antrim	2340						
Traverse	2803	S.L.M.					
Dundee	3551	S.L.M.	3606	3615			
			3635	3652			
Total Depth		3652					

Remarks H.F.W. at 306' - flowed - actual - 612 barrels 1st. 18 hrs. natural.

Signed D. C. Shackelford