



Western Michigan University
ScholarWorks at WMU

Legacy Scout Tickets from Pure Oil Company

8-20-2021

MGRRE_PureOilScoutTickets_LUKS BLAZEY_1_21051041760000

MGRRE

Western Michigan University

Follow this and additional works at: <https://scholarworks.wmich.edu/pure>



Part of the Geology Commons

WMU ScholarWorks Citation

MGRRE, "MGRRE_PureOilScoutTickets_LUKS BLAZEY_1_21051041760000" (2021). *Legacy Scout Tickets from Pure Oil Company*. 1947.

<https://scholarworks.wmich.edu/pure/1947>

This Document is brought to you for free and open access via ScholarWorks at WMU. It has been accepted for inclusion in Legacy Scout Tickets from Pure Oil Company by an authorized administrator of ScholarWorks at WMU. See the National Digital Catalogue - Science Base Catalogue for more collections submitted by MGRRE.



MGRRE_PureOilScoutTickets_LUKS BLAZEY_1_21051041760000

API 21051041760000

Permit Number 4176

Lease Name LUKS BLAZEY

Well Number 1

County Gladwin

Township 18N

Range 1W

Section 10

2021 DEQ or Pure co_name T AND E INVESTMENTS CO OF MICHIGAN

Pure Number 273

Latitude 43.9724499

Longitude -84.415202

THE PURE OIL COMPANY

COMPLETION RECORD OF WELLS DRILLED BY OTHER OPERATORS

DATE June 3, 1937

LOCATION REPORT

No. 273

STATE Michigan COUNTY Gladwin DIST. Buckeye TWP. Buckeye SEC. 10 TOWN 18 N RANGE 1 W
WELL No. 1 (SERIAL No. 273) FARM Blazey Luks ACRES

NAME OF STREAM OR WATERS QUADRANGLE NW NW NE

OPERATOR The Sun Oil Company Map Buckeye Township, Gladwin County

320 330 Feet from North Line of Farm

East

South

320 330 West

330 330 Feet from North Line of Section

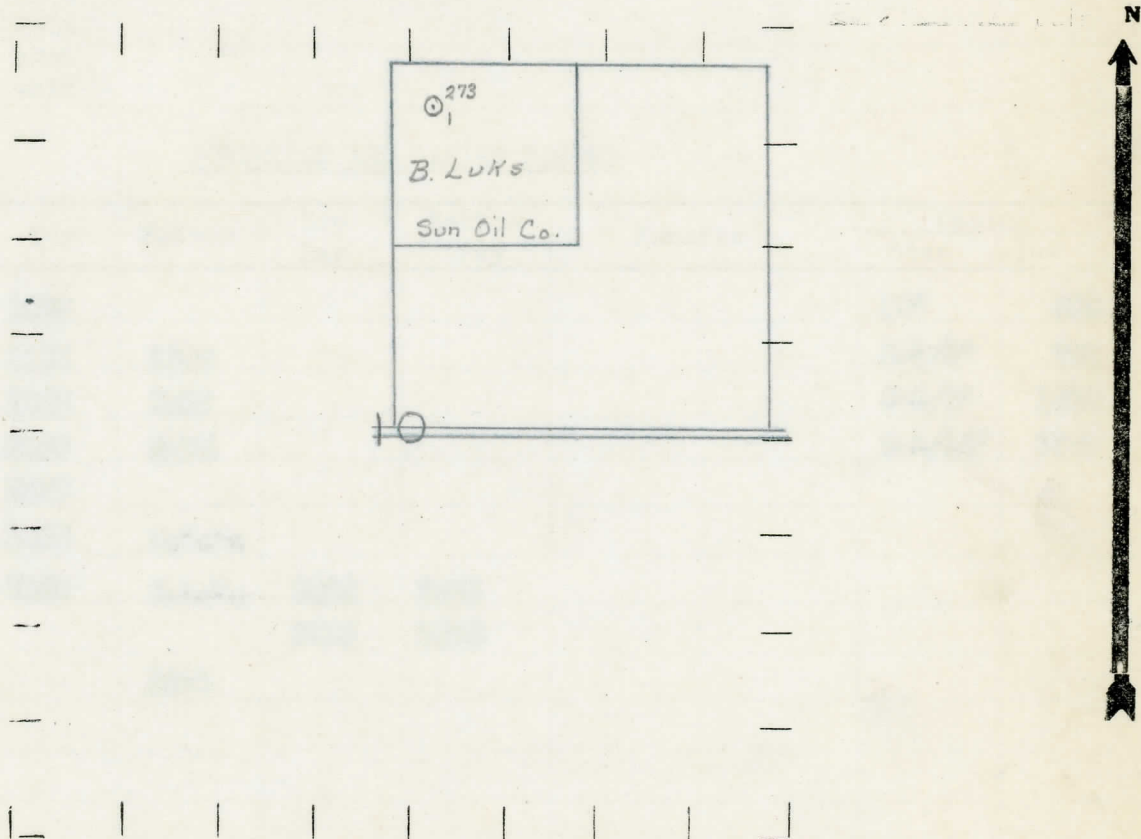
East

South

330 330 West 1/4

- LEGEND
- LOCATION
 - ⊕ RIG
 - ⊕ DRILLING
 - ☀ GAS WELL
 - OIL WELL
 - ⊕ SMALL OIL WELL
 - DRY HOLE
 - ⊕ DRY SHOWING OIL
 - DRY SHOWING GAS
 - ⊕ ABANDONED LOCATION
 - ☀ ABANDONED GAS WELL
 - ⊕ ABANDONED OIL WELL

NOTE: Below make tracing from map, (when no map is obtainable make sketch) showing farm, center of section, this location with measurements and also wells, dry holes, or other locations in the vicinity of this location.



REMARKS:

SIGNED R. A. Page Superintendent or Foreman.

Michigan Producing Division

Date July 22, 1937 No. 273
 State Michigan County Gladwin Dist. Buckeye
 (Serial No.) Twp. 18 N Sec. 10 Rge. 1 W
 Well No. 1 (County No.) 273 Farm Blazey Luks Acres _____
 Operator Sun Oil Company Information secured from Scouting Department
 Date well started 6-2-37 Date well completed 7-16-37 Elevation 760.7

PRODUCTION RECORD

1st 24 hours natural Est. 1200 barrels
 2nd 24 hours natural _____
 Date of shot _____ No. of quarts _____
 From _____ to _____ From _____ to _____
 Date of acid _____ No. of gallons _____
 shot _____
 1st 24 hours after acid _____
 shot _____
 2nd 24 hours after acid _____

FORMATION AND CASING RECORD

Formation	Top	Bottom	Top Pay	Bottom Pay	Remarks	Casing	
						Size	Set
Marshall	1027					10"	205
Red Rock	1152	1208				8-1/4"	791
Sunbury	2232	2257				6-5/8"	1238
Berea	2257	2290				5-3/16"	3557
Antrim	2347						
Traverse	2805	C.T.M.					
Dundee	3548	S.L.M.	3608	3633			
			3635	3648			
Total Depth		3648					

Remarks _____

Signed D. C. Shackelford