



Western Michigan University
ScholarWorks at WMU

Legacy Scout Tickets from Pure Oil Company

8-20-2021

MGRRE_PureOilScoutTickets_MARY RABB_B-5_21051041780000

MGRRE

Western Michigan University

Follow this and additional works at: <https://scholarworks.wmich.edu/pure>



Part of the Geology Commons

WMU ScholarWorks Citation

MGRRE, "MGRRE_PureOilScoutTickets_MARY RABB_B-5_21051041780000" (2021). *Legacy Scout Tickets from Pure Oil Company*. 1949.

<https://scholarworks.wmich.edu/pure/1949>

This Document is brought to you for free and open access via ScholarWorks at WMU. It has been accepted for inclusion in Legacy Scout Tickets from Pure Oil Company by an authorized administrator of ScholarWorks at WMU. See the National Digital Catalogue - Science Base Catalogue for more collections submitted by MGRRE.



MGRRE_PureOilScoutTickets_MARY RABB_B-5_21051041780000

API 21051041780000

Permit Number 4178

Lease Name MARY RABB

Well Number B-5

County Gladwin

Township 18N

Range 1W

Section 10

2021 DEQ or Pure co_name ORYX ENERGY CO

Pure Number 275

Latitude 43.9722589

Longitude -84.4079967

THE PURE OIL COMPANY

LOCATION REPORT

No. 275

DATE June 3, 1937

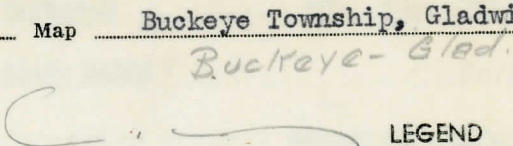
STATE Michigan COUNTY Gladwin DIST. TWP. Buckeye PREC. Mary Rabb SEC. 10 TOWN 18 N RANGE 1 W

WELL No. 5 (SERIAL No. 275) FARM ACRES

NAME OF STREAM OR WATERS QUADRANGLE NE-NE-NE

OPERATOR The Sun Oil Company Map Buckeye Township, Gladwin County

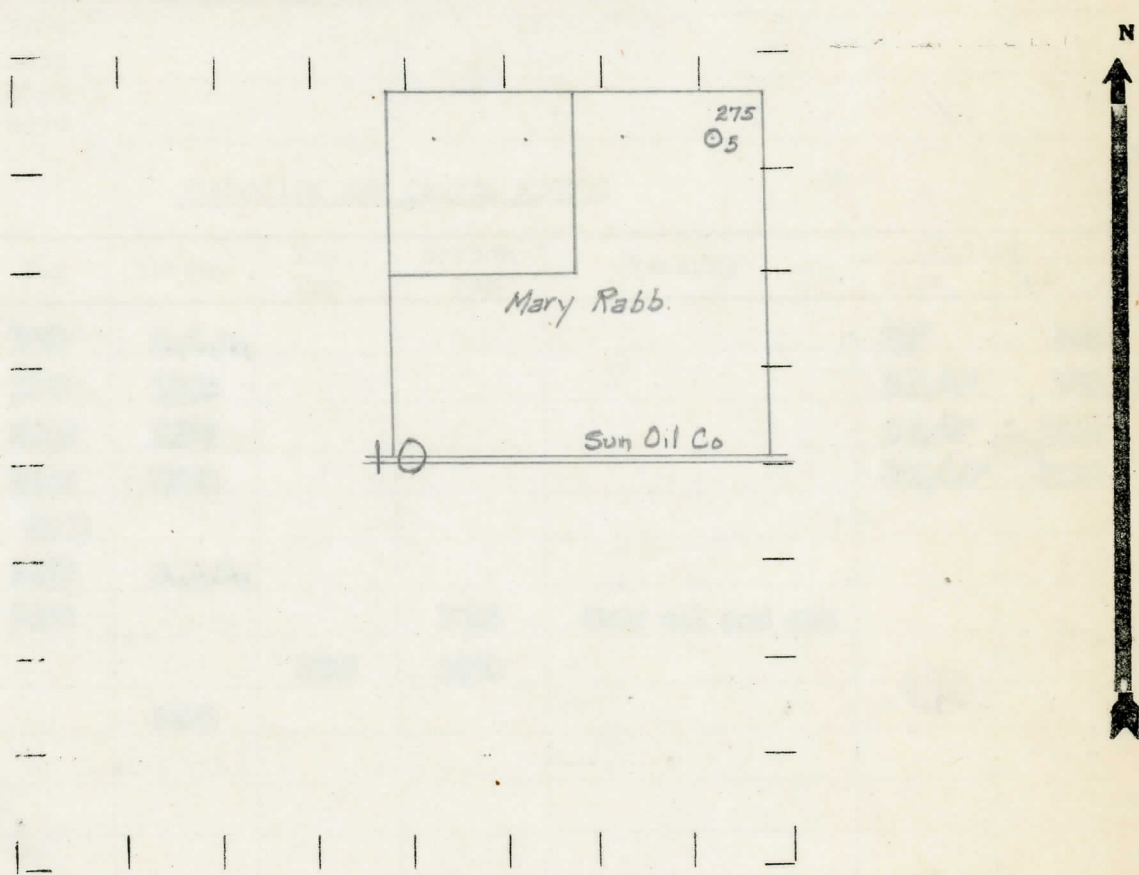
330 330 Feet from North Line of Farm
330 330 East
330 330 South
330 330 West
330 330 Feet from North Line of Section
330 330 East
330 330 South
330 330 West



LEGEND

- O LOCATION
O RIG
+ DRILLING
* GAS WELL
● OIL WELL
● SMALL OIL WELL
O DRY HOLE
* DRY SHOWING OIL
* DRY SHOWING GAS
O ABANDONED LOCATION
* ABANDONED GAS WELL
● ABANDONED OIL WELL

NOTE: Below make tracing from map, (when no map is obtainable make sketch) showing farm, center of section, this location with measurements and also wells, dry holes, or other locations in the vicinity of this location.



REMARKS:

SIGNED

R. d. [Signature] Superintendent or Foreman.

COMPLETION RECORD OF WELLS DRILLED BY OTHER OPERATORS

Michigan Producing Division

Date July 29, 1937 No. 275
 State Michigan County Gladwin Dist. Duckeye
 (Serial No.) Twp. Duckeye Sec. 10 Twp. 18 N Rge. 1 W
 Well No. 5 (County No.) 275 Farm Mary Rabb Acres _____
 Operator Sun Oil Company Information secured ~~from~~ Scouting Department by _____
 Date well started 6-4-37 Date well completed 7-24-37 Elevation 758.0

PRODUCTION RECORD

1st 24 hours natural 888 barrels
 2nd 24 hours natural _____
 Date of shot _____ No. of quarts _____ From _____ to _____ From _____ to _____
 Date of acid _____ No. of gallons _____
 1st 24 hours after acid shot _____
 2nd 24 hours after acid shot _____

FORMATION AND CASING RECORD

Formation	Top	Bottom	Top Pay	Bottom Pay	Remarks	Casing	
						Size	Set At
Marshall	1049	C.T.M.				10"	205
Red Rock	1167	1209				8-1/4"	785
Sunbury	2232	2262				6-5/8"	1241
Berea	2262	2332				5-3/16"	3558
Antrim	2350						
Traverse	2325	C.T.M.					
Dundee	3552			3613	Show oil and gas		
			3613	3620			
Total Depth		3652					

Remarks _____

Signed D. C. Shackelford