



Western Michigan University
ScholarWorks at WMU

Legacy Scout Tickets from Pure Oil Company

8-20-2021

MGRRE_PureOilScoutTickets_RABB, MARY_6_21051041790000

MGRRE

Western Michigan University

Follow this and additional works at: <https://scholarworks.wmich.edu/pure>



Part of the Geology Commons

WMU ScholarWorks Citation

MGRRE, "MGRRE_PureOilScoutTickets_RABB, MARY_6_21051041790000" (2021). *Legacy Scout Tickets from Pure Oil Company*. 1950.

<https://scholarworks.wmich.edu/pure/1950>

This Document is brought to you for free and open access via ScholarWorks at WMU. It has been accepted for inclusion in Legacy Scout Tickets from Pure Oil Company by an authorized administrator of ScholarWorks at WMU. See the National Digital Catalogue - Science Base Catalogue for more collections submitted by MGRRE.



MGRRE_PureOilScoutTickets_RABB, MARY_6_21051041790000

API 21051041790000

Permit Number 4179

Lease Name RABB, MARY

Well Number 6

County Gladwin

Township 18N

Range 1W

Section 10

2021 DEQ or Pure co_name T AND E INVESTMENTS CO OF MICHIGAN

Pure Number 276

Latitude 43.9723701

Longitude -84.4102697

The Pure Oil Company
THE PURE OIL COMPANY

DATE June 3, 1937

LOCATION REPORT

No. 276

STATE Michigan COUNTY Gladwin DIST. Buckeye TWP. Buckeye SEC. 10 TOWN 18 N RANGE 1 W

WELL No. 6 (SERIAL No. 276) FARM Mary Rabb ACRES

NAME OF STREAM OR WATERS QUADRANGLE NW-NE-NE

OPERATOR The Sun Oil Company Map Buckeye Township, Gladwin County

330 330 Feet from North Line of Farm
" " East " " "
" " South " " "
330 330 " " West " " "
330 330 Feet from North Line of Section
990 990 " " East " " "
" " South " " "
" " West " " "

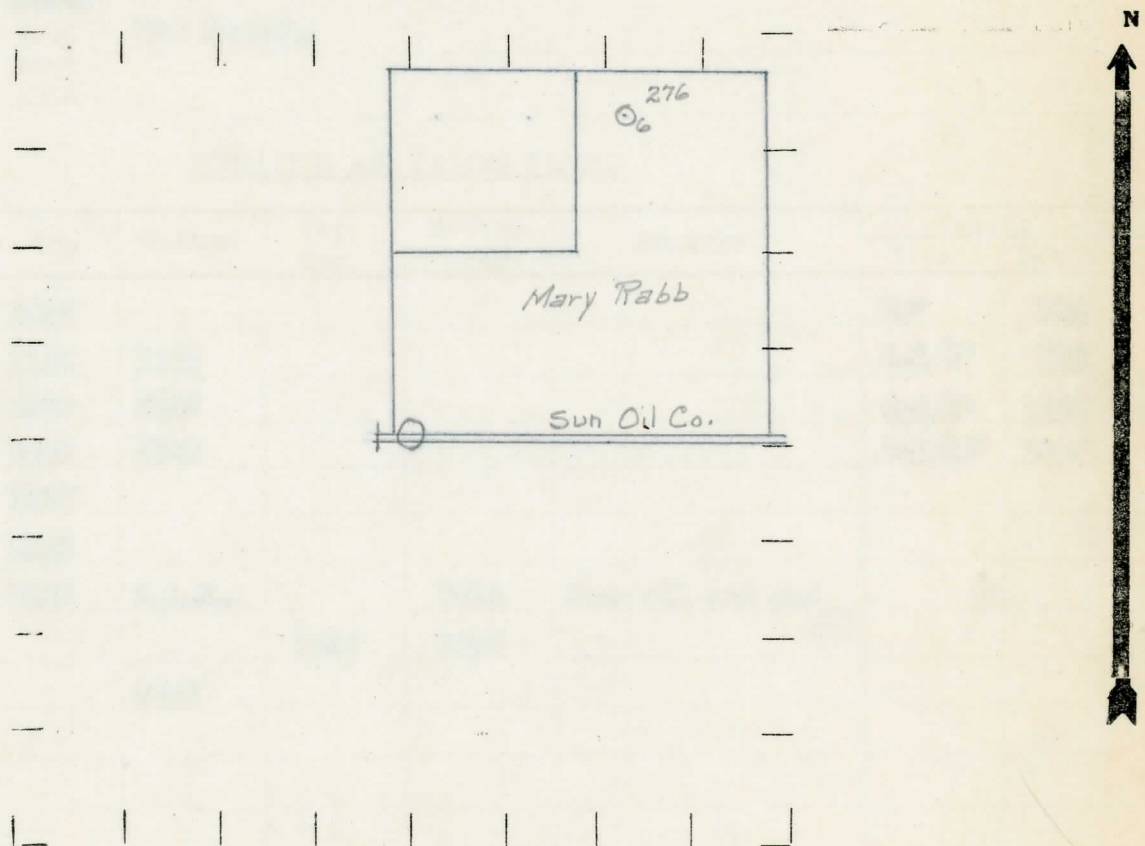
Low

- LOCATION
- ⊙ RIG
- ⊕ DRILLING
- ☀ GAS WELL
- OIL WELL
- ⊖ SMALL OIL WELL

LEGEND

- ⊙ DRY HOLE
- ⊖ DRY SHOWING OIL
- ⊖ DRY SHOWING GAS
- ⊙ ABANDONED LOCATION
- ☀ ABANDONED GAS WELL
- ⊖ ABANDONED OIL WELL

NOTE: Below make tracing from map, (when no map is obtainable make sketch) showing farm, center of section, this location with measurements and also wells, dry holes, or other locations in the vicinity of this location.



REMARKS:

SIGNED

R. d. Young
Superintendent or Foreman.

COMPLETION RECORD OF WELLS DRILLED BY OTHER OPERATORS

Michigan Producing Division

Date September 2, 1937 No. 276
 State Michigan County Gladwin Dist. _____
 (Serial No.) Twp. Buckeye Sec. 10 Twp. 18 N Rge. 1 W
 Well No. 6 (County No.) 276 Farm Mary Rabb Acres _____
 Operator Sam Oil Company Information secured ~~from~~ Scouting Department by _____
 Date well started 7-9-37 Date well completed 8-21-37 Elevation 759.9

PRODUCTION RECORD

1st 24 hours natural Hole filled up with oil.
 2nd 24 hours natural _____
 Date of shot _____ No. of quarts _____ From _____ to _____ From _____ to _____
 Date of acid 8-26-37 No. of gallons 1000
~~shot~~
 1st 24 hours after acid 290 Barrels
 shot
 2nd 24 hours after acid _____

FORMATION AND CASING RECORD

Formation	Top	Bottom	Top Pay	Bottom Pay	Remarks	Casing	
						Size	Set
Marshall	1925					10"	204
Red Rock	1160	1198				8-1/4"	790
Sunbury	2240	2265				6-5/8"	1244
Berea	2265	2328				5-3/16"	3557
Antrim	2356						
Traverse	2816						
Dundee	3553	S.L.M.		3614	Show oil and gas		
			3614	3620			
Total Depth		3652					

Remarks _____

Signed D. C. Shackelford