



Western Michigan University
ScholarWorks at WMU

Legacy Scout Tickets from Pure Oil Company

8-20-2021

MGRRE_PureOilScoutTickets_ASHLEY, PECK_2_21051042020000

MGRRE

Western Michigan University

Follow this and additional works at: <https://scholarworks.wmich.edu/pure>



Part of the Geology Commons

WMU ScholarWorks Citation

MGRRE, "MGRRE_PureOilScoutTickets_ASHLEY, PECK_2_21051042020000" (2021). *Legacy Scout Tickets from Pure Oil Company*. 1963.

<https://scholarworks.wmich.edu/pure/1963>

This Document is brought to you for free and open access via ScholarWorks at WMU. It has been accepted for inclusion in Legacy Scout Tickets from Pure Oil Company by an authorized administrator of ScholarWorks at WMU. See the National Digital Catalogue - Science Base Catalogue for more collections submitted by MGRRE.



MGRRE_PureOilScoutTickets_ASHLEY, PECK_2_21051042020000

API 21051042020000

Permit Number 4202

Lease Name ASHLEY, PECK

Well Number 2

County Gladwin

Township 17N

Range 1E

Section 4

2021 DEQ or Pure co_name GORDON OIL CO

Pure Number 289

Latitude 43.90203

Longitude -84.36474

THE PURE OIL COMPANY

LOCATION REPORT

No. 289

DATE June 3, 1937

STATE Michigan COUNTY Gladwin DIST. Billings TWP. Billings SEC. 4 TOWN 17 N RANGE 1 E. PREC. Aleck Ashley

WELL No. 22 (SERIAL No. 289) FARM Aleck Ashley ACRES QUADRANGLE SW-SW-SW SW SW SW

NAME OF STREAM OR WATERS OPERATOR Gordon Oil Company Map Billings Township, Gladwin County

Feet from North Line of Farm

330 330 East " " "

275 275 South " " "

275 275 West " " "

Feet from North Line of Section

330 330 East " " "

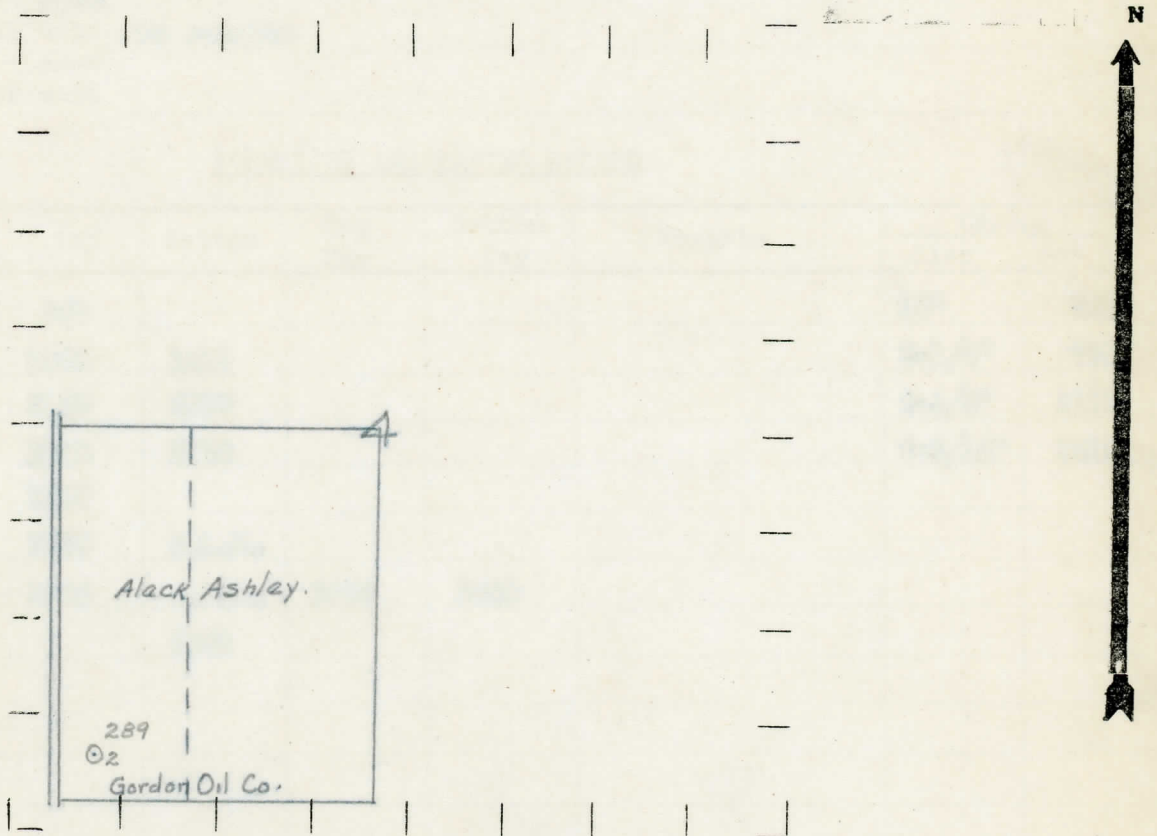
275 275 South " " "

275 275 West " " "

LEGEND

- LOCATION, RIG, DRILLING, GAS WELL, OIL WELL, SMALL OIL WELL, DRY HOLE, DRY SHOWING OIL, DRY SHOWING GAS, ABANDONED LOCATION, ABANDONED GAS WELL, ABANDONED OIL WELL

NOTE: Below make tracing from map, (when no map is obtainable make sketch) showing farm, center of section, this location with measurements and also wells, dry holes, or other locations in the vicinity of this location.



REMARKS:

SIGNED

R. A. Jagan Superintendent or Foreman

THE PURE OIL COMPANY
The Pure Oil Company

COMPLETION RECORD OF WELLS DRILLED BY OTHER OPERATORS

Michigan Producing Division

Date September 16, 1937 No. 289
 State Michigan County Gladwin Dist. _____
 (Serial No.) _____ Twp. Billings Sec. 4 Twp. 17 N Rge. 1 E
 Well No. 2 (County No.) 289 Farm Aleck Ashley Acres _____
 Operator Gordon Oil Company Information secured ~~xxxxxx~~ by Scouting Department
 Date well started 7-6-37 Date well completed 8-17-37 Elevation 730.2

PRODUCTION RECORD

1st 24 hours natural Filled up 100 ft. - Dry Hole -

2nd 24 hours natural _____

Date of shot _____ No. of quarts _____ From _____ to _____ From _____ to _____

Date of acid 8-24-37 No. of gallons 1000
~~Shot~~

1st 24 hours after acid No results
 shot _____

2nd 24 hours after acid _____

FORMATION AND CASING RECORD

Formation	Top	Bottom	Top Pay	Bottom Pay	Remarks	Casing	
						Size	Set As
Marshall	960					10"	263
Red Rock	1085	1125				8-1/4"	792
Sunbury	2185	2200				6-5/8"	1176
Berea	2200	2230				5-3/16"	3515
Antrim	2310						
Traverse	2760	S.L.M.					
Dundee	3506	S.L.M.	3595	3600			
Total Depth		3622					

Remarks _____

Signed _____

D. C. Shackelford