



Western Michigan University
ScholarWorks at WMU

Legacy Scout Tickets from Pure Oil Company

8-20-2021

**MGRRE_PureOilScoutTickets_STROHKIRCH
AMELIA_1_21051042060000**

MGRRE

Western Michigan University

Follow this and additional works at: <https://scholarworks.wmich.edu/pure>



Part of the Geology Commons

WMU ScholarWorks Citation

MGRRE, "MGRRE_PureOilScoutTickets_STROHKIRCH AMELIA_1_21051042060000" (2021). *Legacy Scout Tickets from Pure Oil Company*. 1964.

<https://scholarworks.wmich.edu/pure/1964>

This Document is brought to you for free and open access via ScholarWorks at WMU. It has been accepted for inclusion in Legacy Scout Tickets from Pure Oil Company by an authorized administrator of ScholarWorks at WMU. See the National Digital Catalogue - Science Base Catalogue for more collections submitted by MGRRE.



MGRRE_PureOilScoutTickets_STROHKIRCH AMELIA_1_21051042060000

API 21051042060000

Permit Number 4206

Lease Name STROHKIRCH AMELIA

Well Number 1

County Gladwin

Township 18N

Range 1W

Section 10

2021 DEQ or Pure co_name T AND E INVESTMENTS CO OF MICHIGAN

Pure Number 290

Latitude 43.97236

Longitude -84.41774

The Pure Oil Company
THE PURE OIL COMPANY

DATE June 3, 1937

LOCATION REPORT

No. 290

STATE Michigan COUNTY Gladwin DIST. Buckeye TWP. Buckeye SEC. 10 TOWN 18 N RANGE 1 W

WELL No. 1 (SERIAL No. 290) FARM Amelia Strohkirch ACRES

NAME OF STREAM OR WATERS QUADRANGLE NE-NE-NW, NE NE NW

OPERATOR The Sun Oil Company Map Buckeye Township, Gladwin County

330 330 Feet from North Line of Farm

330 330 " " East " " "

" " South " " "

" " West " " "

330 330 Feet from North Line of Section

330 330 " " East "1/4"

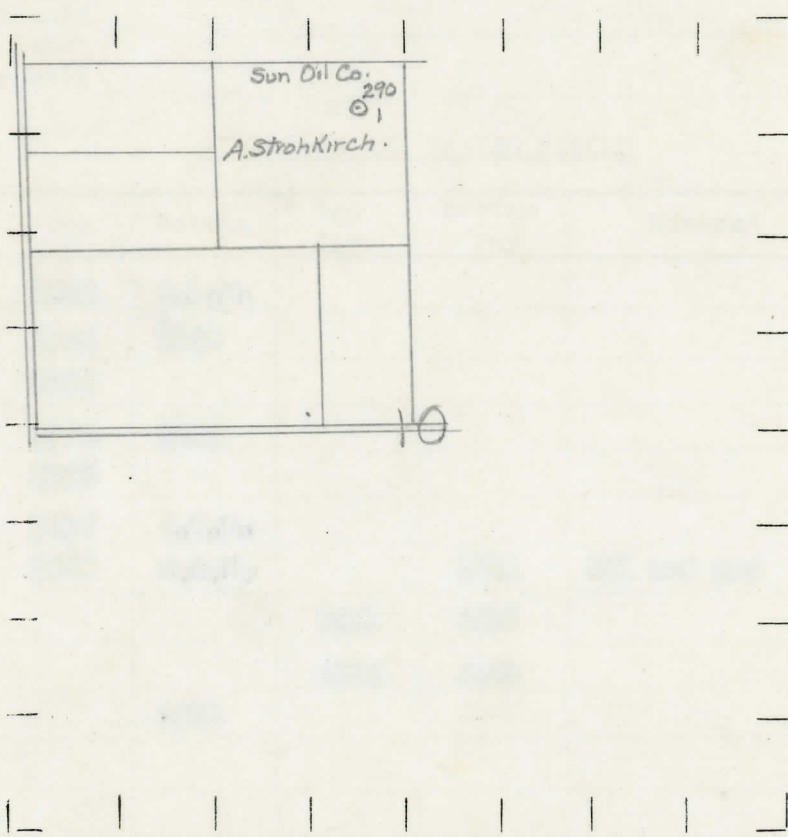
" " South " " "

" " West " " "

Loc.

- LEGEND**
- LOCATION
 - ⊕ RIG
 - ⊕ DRILLING
 - ☀ GAS WELL
 - OIL WELL
 - SMALL OIL WELL
 - ⊙ DRY HOLE
 - ⊙ DRY SHOWING OIL
 - ⊙ DRY SHOWING GAS
 - ⊙ ABANDONED LOCATION
 - ☀ ABANDONED GAS WELL
 - ABANDONED OIL WELL

NOTE: Below make tracing from map, (when no map is obtainable make sketch) showing farm, center of section, this location with measurements and also wells, dry holes, or other locations in the vicinity of this location.



REMARKS:

SIGNED R. L. Yager
Superintendent or Foreman.

COMPLETION RECORD OF WELLS DRILLED BY OTHER OPERATORS

Michigan Producing Division

Date August 19, 1937 No. 290
 State Michigan County Gladwin Dist. Duckeye Twp. 10 Sec. 10 Twp. 13 N Rge. 1 W
 Well No. 1 (Serial No.) (County No.) 290 Farm Amelia Strohkirch Acres _____
 Operator Sun Oil Company Information secured ~~from~~ Scouting Department by _____
 Date well started 6-23-37 Date well completed 8-11-37 Elevation 762.0

PRODUCTION RECORD

1st 24 hours natural Est. 800 barrels-flowed 422 bbls.-actual-1st. 14 hrs.

2nd 24 hours natural _____

Date of shot _____ No. of quarts _____ From _____ to _____ From _____ to _____

Date of acid _____ No. of gallons _____

1st 24 hours after acid shot _____

2nd 24 hours after acid shot _____

FORMATION AND CASING RECORD

Formation	Top	Bottom	Top Pay	Bottom Pay	Remarks	Casing	
						Size	Set At
Marshall	1026	S.L.M.				10"	225
Red Rock	1164	1209				8-1/4"	790
Sunbury	2259					6-5/8"	1239
Berea	2270	2340				5-3/16"	3559
Antrim	2350						
Traverse	2817	C.T.M.					
Dundee	3550	S.L.M.		3611	Oil and gas		
			3611	3621			
			3634	3639			
Total Depth		3650					

Remarks _____

Signed D. C. Shackelford