



Western Michigan University  
ScholarWorks at WMU

---

Legacy Scout Tickets from Pure Oil Company

---

8-20-2021

**MGRRE\_PureOilScoutTickets\_MCMAHON,  
GEORGE\_1\_21051043340000**

MGRRE  
*Western Michigan University*

Follow this and additional works at: <https://scholarworks.wmich.edu/pure>



Part of the Geology Commons

---

#### **WMU ScholarWorks Citation**

MGRRE, "MGRRE\_PureOilScoutTickets\_MCMAHON, GEORGE\_1\_21051043340000" (2021). *Legacy Scout Tickets from Pure Oil Company*. 2011.  
<https://scholarworks.wmich.edu/pure/2011>

This Document is brought to you for free and open access via ScholarWorks at WMU. It has been accepted for inclusion in Legacy Scout Tickets from Pure Oil Company by an authorized administrator of ScholarWorks at WMU. See the National Digital Catalogue - Science Base Catalogue for more collections submitted by MGRRE.



---

**MGRRE\_PureOilScoutTickets\_MCMAHON, GEORGE\_1\_21051043340000**

API 21051043340000

Permit Number 4334

Lease Name MCMAHON, GEORGE

Well Number 1

County Gladwin

Township 18N

Range 1W

Section 36

2021 DEQ or Pure co\_name TURNER PETROLEUM CORP

Pure Number 337

Latitude 43.9015

Longitude -84.372

The Pure Oil Company  
THE PURE OIL COMPANY

DATE July 22, 1937

LOCATION REPORT

No. 337

STATE Michigan COUNTY Gladwin

DIST. Buckeye TWP. Buckeye SEC. 36 TOWN 18 N RANGE 1 W

WELL No. 1 (SERIAL No. 337) FARM

PREC. Geo. McMahon George McMahon ACRES

NAME OF STREAM OR WATERS QUADRANGLE SE-SW-SE  
SE SW SE

OPERATOR Turner Petroleum Company Map Buckeye Township, Gladwin County

Feet from North Line of Farm  
330 330 " " East " " "  
330 330 " " South " " "  
" " West " " "

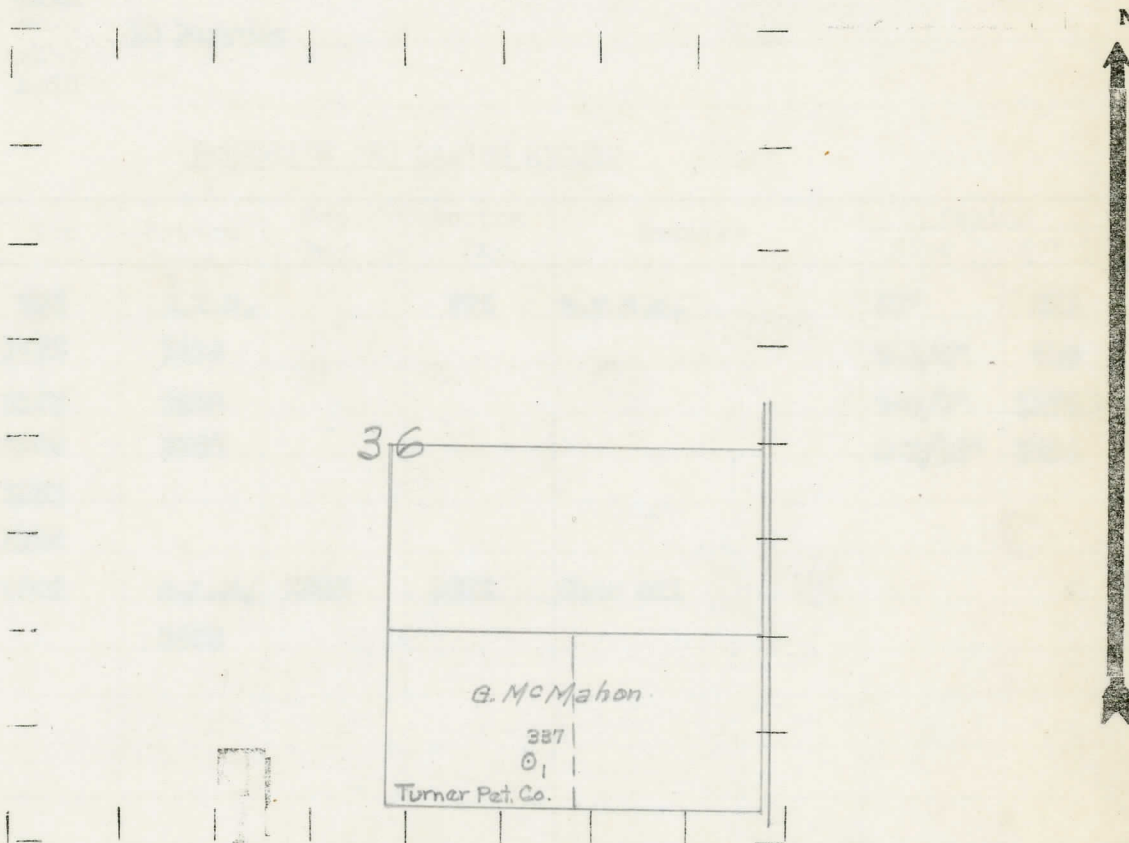
Feet from North Line of Section  
" " East " " "  
330 330 " " South " " "  
990 990 " " West 1/4 " "



LEGEND

- LOCATION
- ⊕ RIG
- ⊕ DRILLING
- ☀ GAS WELL
- OIL WELL
- ⊕ SMALL OIL WELL
- ⊕ DRY HOLE
- ⊕ DRY SHOWING OIL
- ⊕ DRY SHOWING GAS
- ⊕ ABANDONED LOCATION
- ☀ ABANDONED GAS WELL
- ⊕ ABANDONED OIL WELL

NOTE: Below make tracing from map, (when no map is obtainable make sketch) showing farm, center of section, this location with measurements and also wells, dry holes, or other locations in the vicinity of this location.



REMARKS:

SIGNED

Superintendent or Foreman.

THE BUREAU OF COMMERCE

COMPLETION RECORD OF WELLS DRILLED BY OTHER OPERATORS

Michigan Producing Division

Date November 11, 1937 No. 337  
 State Michigan County Gladwin Dist. Twp. Buckeye Sec. 36 Twp. 18 N Rge. 1 W  
 (Serial No.)  
 Well No. 1 (County No.) 337 Farm George McMahon Acres \_\_\_\_\_  
 Operator Turner Petroleum Corporation Information secured ~~from~~ Scouting Department by \_\_\_\_\_  
 Date well started 7-29-37 Date well completed 9-8-37 Elevation 727.4

PRODUCTION RECORD

1st 24 hours natural \_\_\_\_\_  
 2nd 24 hours natural \_\_\_\_\_  
 Date of shot \_\_\_\_\_ No. of quarts \_\_\_\_\_ From \_\_\_\_\_ to \_\_\_\_\_ From \_\_\_\_\_ to \_\_\_\_\_  
 Date of acid 11-3-37 No. of gallons 1000  
 1st 24 hours after acid shot 10 Barrels  
 2nd 24 hours after acid shot \_\_\_\_\_

FORMATION AND CASING RECORD

Formation	Top	Bottom	Top Pay	Bottom Pay	Remarks	Casing	
						Size	Set At
Marshall	965	C.T.M.		970	H.F.S.W.	10"	312
Red Rock	1078	1114				8-1/4"	780
Sunbury	2175	2205				6-5/8"	1175
Berea	2205	2260				5-3/16"	3526
Antrim	2291						
Traverse	2758						
Dundee	3509	S.L.M.	3592	3602	Show oil		
Total Depth		3602					

Remarks This well filled up with 400 ft. fluid which included 1 bailer of salt water in six days before treating.

Signed D. C. Shackelford