



Western Michigan University
ScholarWorks at WMU

Legacy Scout Tickets from Pure Oil Company

8-20-2021

MGRRE_PureOilScoutTickets_PETERS_1_21051043930000

MGRRE

Western Michigan University

Follow this and additional works at: <https://scholarworks.wmich.edu/pure>



Part of the Geology Commons

WMU ScholarWorks Citation

MGRRE, "MGRRE_PureOilScoutTickets_PETERS_1_21051043930000" (2021). *Legacy Scout Tickets from Pure Oil Company*. 2042.

<https://scholarworks.wmich.edu/pure/2042>

This Document is brought to you for free and open access via ScholarWorks at WMU. It has been accepted for inclusion in Legacy Scout Tickets from Pure Oil Company by an authorized administrator of ScholarWorks at WMU. See the National Digital Catalogue - Science Base Catalogue for more collections submitted by MGRRE.



MGRRE_PureOilScoutTickets_PETERS_1_21051043930000

API 21051043930000

Permit Number 4393

Lease Name PETERS

Well Number 1

County Gladwin

Township 18N

Range 1W

Section 34

2021 DEQ or Pure co_name ROSE LOUIS

Pure Number 368

Latitude 43.90351

Longitude -84.41203

DATE August 12, 1937

LOCATION REPORT

No. 368

STATE Michigan COUNTY Gladwin DIST. Buckeye TWP. Buckeye SEC. 34 TOWN 18 N RANGE 1 W

WELL No. 1 (SERIAL No. 368) FARM Peters ACRES

NAME OF STREAM OR WATERS QUADRANGLE NE SW SE

OPERATOR Louis Rose Map Buckeye Township, Gladwin County

330330 Feet from North Line of Farm

320330 " " East " " "

" " South " " "

" " West " " "

Feet from North Line of Section

990990 " " East " " "

990990 " " South " " "

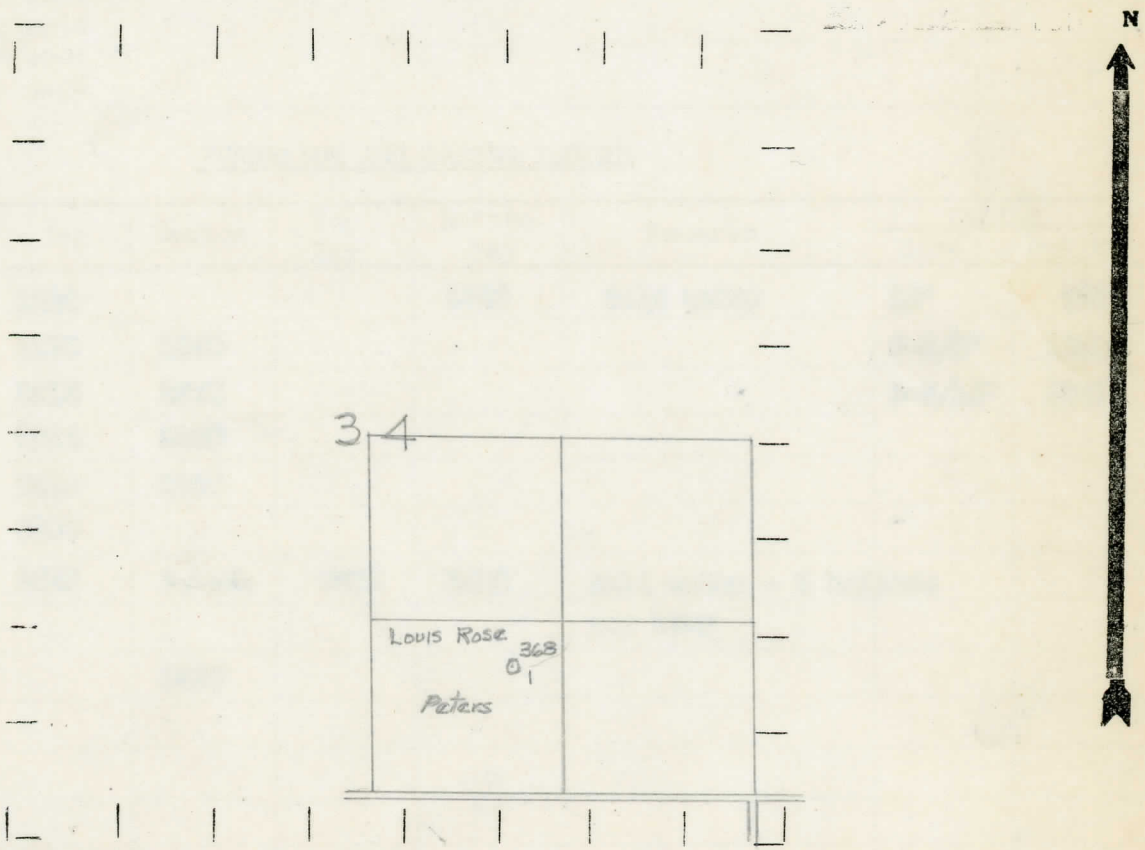
" " West " 1/4 "

Buckeye - Glad.

LEGEND

- LOCATION
- ⊕ RIG
- ⊕ DRILLING
- ☀ GAS WELL
- OIL WELL
- ⬮ SMALL OIL WELL
- ⊖ DRY HOLE
- ⬮ DRY SHOWING OIL
- ⊖ DRY SHOWING GAS
- ⊖ ABANDONED LOCATION
- ☀ ABANDONED GAS WELL
- ⬮ ABANDONED OIL WELL

NOTE: Below make tracing from map, (when no map is obtainable make sketch) showing farm, center of section, this location with measurements and also wells, dry holes, or other locations in the vicinity of this location.



REMARKS:

SIGNED

R. d. Yeager

Superintendent or Foreman.

COMPLETION RECORD OF WELLS DRILLED BY OTHER OPERATORS

Michigan Producing Division

Date **October 7, 1937** No. **368**
 State **Michigan** County **Gladwin** Dist. **Duckeye** Twp. **18 N** Rge. **1 W**
 Well No. **1** (Serial No.) (County No.) **368** Farm **Peters** Acres
 Operator **Louis Rose** Information secured ~~from~~ **Scouting Department** by
 Date well started **8-20-37** Date well completed **9-29-37** Elevation **732.0**

PRODUCTION RECORD

1st 24 hours natural **Dry Hole**
 2nd 24 hours natural
 Date of shot No. of quarts From to From to
 Date of acid No. of gallons
 1st 24 hours after acid shot
 2nd 24 hours after acid shot

FORMATION AND CASING RECORD

Formation	Top	Bottom	Top Pay	Bottom Pay	Remarks	Casing	
						Size	Set At
Marshall	1010			1050	Salt water	10"	238
Red Rock	1170	1240				6-5/8"	1290
Sunbury	2315	2325				5-3/16"	3549
Berea	2325	2400					
Antrim	2440	2750					
Traverse	2905						
Dundee	3612	S.L.M.	3675	3680	Salt water - 5 bailers per hour		
Total Depth		3680					

Remarks

Signed **D. C. Shackelford**