



Western Michigan University  
ScholarWorks at WMU

---

Legacy Scout Tickets from Pure Oil Company

---

8-20-2021

**MGRRE\_PureOilScoutTickets\_HENDERSON, BURT  
C\_1\_21051043940000**

MGRRE  
*Western Michigan University*

Follow this and additional works at: <https://scholarworks.wmich.edu/pure>



Part of the Geology Commons

---

#### WMU ScholarWorks Citation

MGRRE, "MGRRE\_PureOilScoutTickets\_HENDERSON, BURT C\_1\_21051043940000" (2021). *Legacy Scout Tickets from Pure Oil Company*. 2043.  
<https://scholarworks.wmich.edu/pure/2043>

This Document is brought to you for free and open access via ScholarWorks at WMU. It has been accepted for inclusion in Legacy Scout Tickets from Pure Oil Company by an authorized administrator of ScholarWorks at WMU. See the National Digital Catalogue - Science Base Catalogue for more collections submitted by MGRRE.



---

**MGRRE\_PureOilScoutTickets\_HENDERSON, BURT C\_1\_21051043940000**

API 21051043940000

Permit Number 4394

Lease Name HENDERSON, BURT C

Well Number 1

County Gladwin

Township 18N

Range 1W

Section 4

2021 DEQ or Pure co\_name ORYX ENERGY CO

Pure Number 369

Latitude 43.97988

Longitude -84.43258

The Pure Oil Company  
THE PURE OIL COMPANY

DATE August 12, 1937

LOCATION REPORT

No. 369

STATE Michigan COUNTY Gladwin

DIST. Buckeye TWP. Buckeye SEC. 4

TOWN 18 N RANGE 1 W

WELL No. 11 (SERIAL No. 369) FARM

PREC. Burt C. Henderson

ACRES

NAME OF STREAM OR WATERS

QUADRANGLE NE NW SE

OPERATOR Sun Oil Company

Map Buckeye Township, Gladwin County

33330 Feet from North Line of Farm

33330 " " East " " "

" " South " " "

" " West " " "

330330 Feet from North Line of Section

" " East " " "

" " South " " "

990990 " " West 1/4 " "

LEGEND

○ LOCATION

⊙ DRY HOLE

⊕ RIG

⊙ DRY SHOWING OIL

⊕ DRILLING

⊙ DRY SHOWING GAS

⊙ GAS WELL

⊙ ABANDONED LOCATION

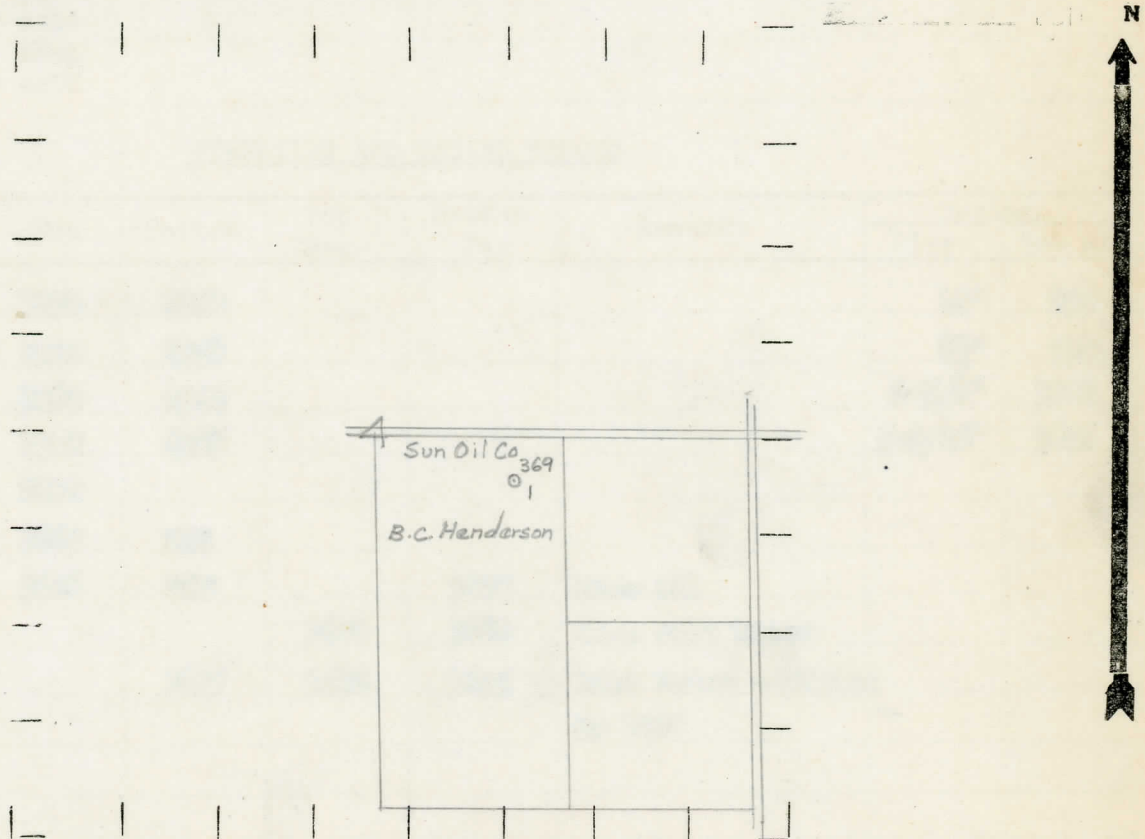
⊙ OIL WELL

⊙ ABANDONED GAS WELL

⊙ SMALL OIL WELL

⊙ ABANDONED OIL WELL

NOTE: Below make tracing from map, (when no map is obtainable make sketch) showing farm, center of section, this location with measurements and also wells, dry holes, or other locations in the vicinity of this location.



REMARKS:

SIGNED

R. L. Kaga  
Superintendent or Foreman.

COMPLETION RECORD OF WELLS DRILLED BY OTHER OPERATORS

Michigan Producing Division

Date September 30, 1937 No. 369  
 State Mich. County Gladwin Dist. Duckeye Twp. Duckeye Sec. 4 Twp. 18N Rge. 1W  
 Well No. 1 (Serial No.) (County No.) 369 Farm Hurt C. Henderson Acres \_\_\_\_\_  
 Operator Sun Oil Co. Information secured from Scouting Dept. by \_\_\_\_\_  
 Date well started 8-16-37 Date well completed 9-29-37 Elevation 770.1'

PRODUCTION RECORD

1st 24 hours natural Dry Hole  
 2nd 24 hours natural \_\_\_\_\_  
 Date of shot \_\_\_\_\_ No. of quarts \_\_\_\_\_ From \_\_\_\_\_ to \_\_\_\_\_ From \_\_\_\_\_ to \_\_\_\_\_  
 Date of acid \_\_\_\_\_ No. of gallons \_\_\_\_\_  
 1st 24 hours after acid shot \_\_\_\_\_  
 2nd 24 hours after acid shot \_\_\_\_\_

FORMATION AND CASING RECORD

Formation	Top	Bottom	Top Pay	Bottom Pay	Remarks	Casing	
						Size	Set At
Marshall	1092	1200				10"	233
Red Rock	1200	1258				8 1/2"	790
Sunbury	2289	2322				6-5/8"	1288
Berea	2322	2355				5-3/16"	3618
Antrim	2400						
Traverse	2863	SLM					
Dundee	3608	SLM		3667	Show Oil		
			3680	3684	Show Salt Water		
Total Depth		3693	3684	3693	Salt Water - filled up 700'		

Remarks \_\_\_\_\_  
 \_\_\_\_\_  
 \_\_\_\_\_

Signed Dean C. Shackelford