



Western Michigan University
ScholarWorks at WMU

Legacy Scout Tickets from Pure Oil Company

8-20-2021

MGRRE_PureOilScoutTickets_RABB, MARY_8_21051044620000

MGRRE

Western Michigan University

Follow this and additional works at: <https://scholarworks.wmich.edu/pure>



Part of the Geology Commons

WMU ScholarWorks Citation

MGRRE, "MGRRE_PureOilScoutTickets_RABB, MARY_8_21051044620000" (2021). *Legacy Scout Tickets from Pure Oil Company*. 2071.

<https://scholarworks.wmich.edu/pure/2071>

This Document is brought to you for free and open access via ScholarWorks at WMU. It has been accepted for inclusion in Legacy Scout Tickets from Pure Oil Company by an authorized administrator of ScholarWorks at WMU. See the National Digital Catalogue - Science Base Catalogue for more collections submitted by MGRRE.



MGRRE_PureOilScoutTickets_RABB, MARY_8_21051044620000

API 21051044620000

Permit Number 4462

Lease Name RABB, MARY

Well Number 8

County Gladwin

Township 18N

Range 1W

Section 10

2021 DEQ or Pure co_name T AND E INVESTMENTS CO OF MICHIGAN

Pure Number 397

Latitude 43.9704812

Longitude -84.4080429

DATE September 9, 1937

LOCATION REPORT

No. 397

STATE Michigan COUNTY Gladwin DIST. Buckeye TWP. Buckeye SEC. 10 TOWN 18 N RANGE 1 W

WELL No. 8 (SERIAL No. 397) FARM Mary Rabb ACRES

NAME OF STREAM OR WATERS QUADRANGLE SE NE NE

OPERATOR Sun Oil Company Map Buckeye Township, Gladwin County

99 990 Feet from North Line of Farm

33 330 " " East " " "

" " South " " "

" " West " " "

99 990 Feet from North Line of Section

33 330 " " East " " "

" " South " " "

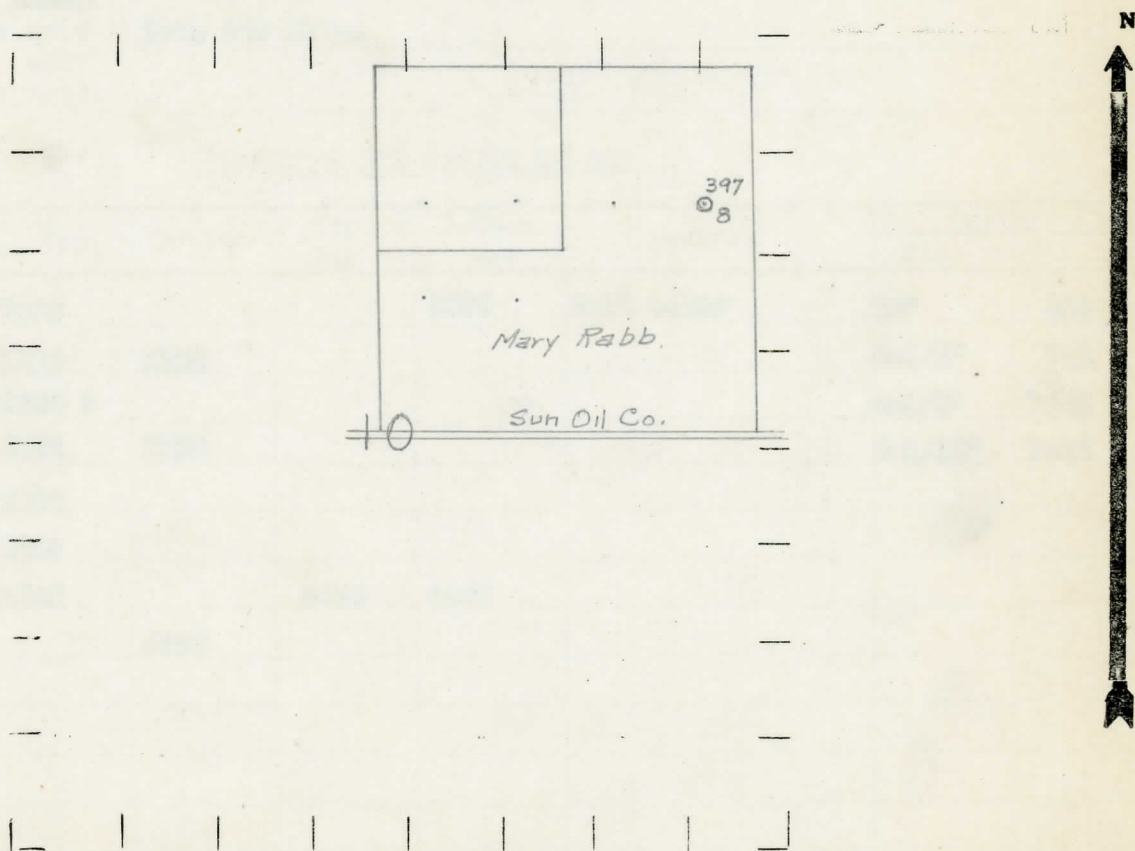
" " West " " "

Loc

LEGEND

- LOCATION
- ⊕ RIG
- ⊕ DRILLING
- ☀ GAS WELL
- OIL WELL
- ⊕ SMALL OIL WELL
- ⊕ DRY HOLE
- DRY SHOWING OIL
- ☀ DRY SHOWING GAS
- ⊕ ABANDONED LOCATION
- ☀ ABANDONED GAS WELL
- ⊕ ABANDONED OIL WELL

NOTE: Below make tracing from map, (when no map is obtainable make sketch) showing farm, center of section, this location with measurements and also wells, dry holes, or other locations in the vicinity of this location.



REMARKS:

SIGNED

Superintendent or Foreman.

COMPLETION RECORD OF WELLS DRILLED BY OTHER OPERATORS

Michigan Producing Division

Date November 24, 1937 No. 397
 State Michigan County Gladwin Dist. Twp. Buckeye Sec. 10 Twp. 18 N Rge. 1 W
 Well No. 8 (Serial No.) (County No.) 397 Farm Mary Rabb Acres
 Operator Sun Oil Company Information secured ~~from~~ Scouting Department by
 Date well started 10-6-37 Date well completed 11-13-37 Elevation 756.3

PRODUCTION RECORD

1st 24 hours natural 154 Bbls.
 2nd 24 hours natural
 Date of shot No. of quarts From to From to
 Date of acid 11-18-37 No. of gallons 1000
 1st 24 hours after acid Est. 580 Bbls.
 shot
 2nd 24 hours after acid

FORMATION AND CASING RECORD

Formation	Top	Bottom	Top Pay	Bottom Pay	Remarks	Casing	
						Size	Set At
Marshall	1035			1035	Salt water	10"	204
Red Rock	1158	1204				8-1/4"	787
Sunbury	2220 ?					6-5/8"	1243
Berea	2255	2350				5-3/16"	3566
Antrim	2350						
Traverse	2805						
Dundee	3560		3620	3627			
Total Depth		3660					

Remarks

Signed D. C. Shackelford