



Western Michigan University
ScholarWorks at WMU

Legacy Scout Tickets from Pure Oil Company

8-20-2021

MGRRE_PureOilScoutTickets_RABB, MARY_9_21051044630000

MGRRE

Western Michigan University

Follow this and additional works at: <https://scholarworks.wmich.edu/pure>



Part of the Geology Commons

WMU ScholarWorks Citation

MGRRE, "MGRRE_PureOilScoutTickets_RABB, MARY_9_21051044630000" (2021). *Legacy Scout Tickets from Pure Oil Company*. 2072.

<https://scholarworks.wmich.edu/pure/2072>

This Document is brought to you for free and open access via ScholarWorks at WMU. It has been accepted for inclusion in Legacy Scout Tickets from Pure Oil Company by an authorized administrator of ScholarWorks at WMU. See the National Digital Catalogue - Science Base Catalogue for more collections submitted by MGRRE.



MGRRE_PureOilScoutTickets_RABB, MARY_9_21051044630000

API 21051044630000

Permit Number 4463

Lease Name RABB, MARY

Well Number 9

County Gladwin

Township 18N

Range 1W

Section 10

2021 DEQ or Pure co_name T AND E INVESTMENTS

Pure Number 398

Latitude 43.9705567

Longitude -84.4103517

The Pure Oil Company
THE PURE OIL COMPANY

DATE September 9, 1937

LOCATION REPORT

No. 398

STATE Michigan COUNTY Gladwin DIST. Buckeye SEC. 10 TOWN 18 N RANGE 1 W

WELL No. 99 (SERIAL No. 398) FARM Mary Rabb ACRES

NAME OF STREAM OR WATERS QUADRANGLE SW NE NE

OPERATOR Sun Oil Company Map Buckeye Township, Gladwin County

99 990 Feet from North Line of Farm
" " East " " "
" " South " " "
33 330 " " West " " "
99 990 Feet from North Line of Section
99 990 " " East " " "
" " South " " "
" " West " " "

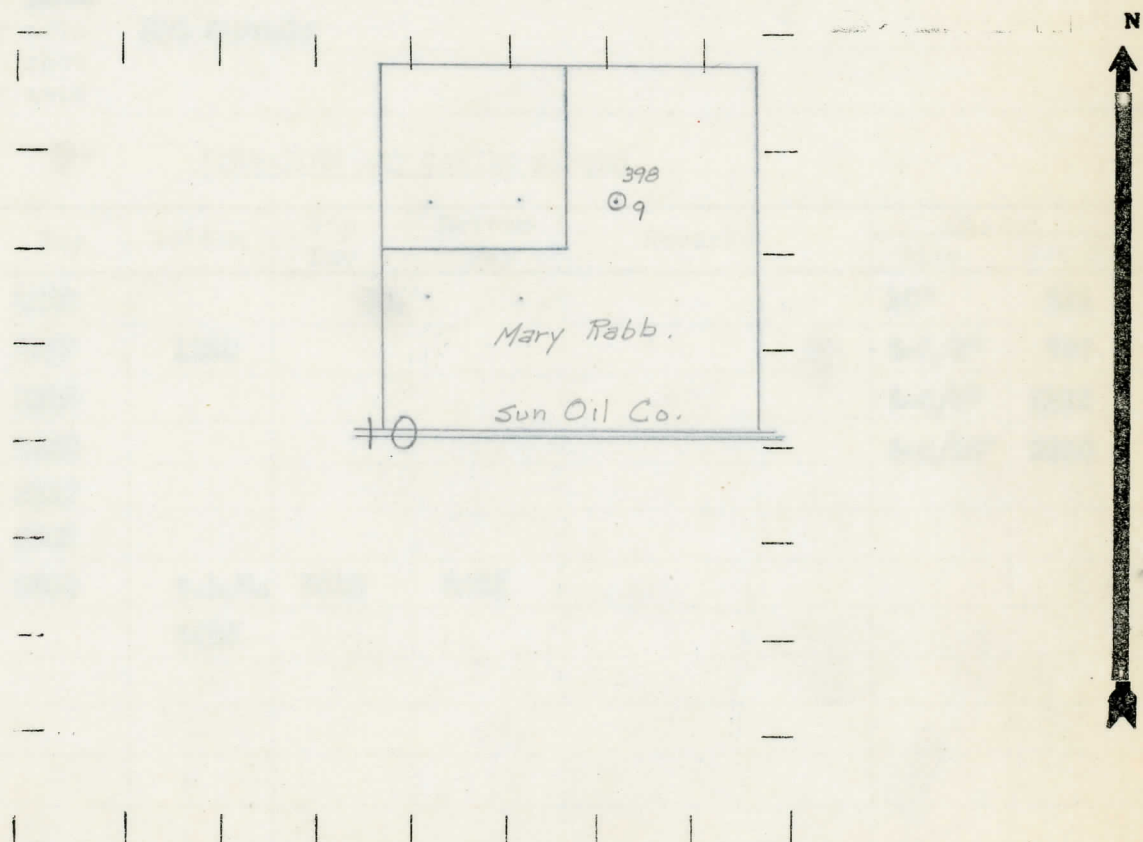
Low

- LOCATION
- ⊙ RIG
- ⊕ DRILLING
- ☀ GAS WELL
- OIL WELL
- ⊖ SMALL OIL WELL

LEGEND

- ⊖ DRY HOLE
- ⊖ DRY SHOWING OIL
- ☀ DRY SHOWING GAS
- ⊖ ABANDONED LOCATION
- ☀ ABANDONED GAS WELL
- ⊖ ABANDONED OIL WELL

NOTE: Below make tracing from map, (when no map is obtainable make sketch) showing farm, center of section, this location with measurements and also wells, dry holes, or other locations in the vicinity of this location.



REMARKS:

SIGNED

Superintendent or Foreman.

COMPLETION RECORD OF WELLS DRILLED BY OTHER OPERATORS

Michigan Producing Division

Date November 11, 1937 No. 398
 State Michigan County Gladwin Dist. Buckeye
 Twp. 10 Sec. 18 N Rge. 1 W
 Well No. 9 (Serial No.) 398 Farm Mary Rabb Acres _____
 Operator Sun Oil Company Information secured ~~from~~ Scouting Department by _____
 Date well started 9-21-37 Date well completed 11-3-37 Elevation 757.7

PRODUCTION RECORD

1st 24 hours natural 47 Barrels
 2nd 24 hours natural _____
 Date of shot _____ No. of quarts _____ From _____ to _____ From _____ to _____
 Date of acid 11-5-37 No. of gallons 1000
 1st 24 hours after acid ~~shot~~ 200 Barrels
 2nd 24 hours after acid _____

FORMATION AND CASING RECORD

Formation	Top	Bottom	Top Pay	Bottom Pay	Remarks	Casing	
						Size	Set At
Marshall	1020					10"	224
Red Rock	1137	1190				8-1/4"	767
Sunbury	2210					6-5/8"	1225
Berea	2230					5-3/16"	3565
Antrim	2317						
Traverse	2802						
Dundee	3558	S.L.M.	3613	3622			
Total Depth		3658					

Remarks _____

Signed D. C. Shackelford