



Western Michigan University
ScholarWorks at WMU

Legacy Scout Tickets from Pure Oil Company

8-20-2021

MGRRE_PureOilScoutTickets_RABB, MARY_12_21051044660000

MGRRE

Western Michigan University

Follow this and additional works at: <https://scholarworks.wmich.edu/pure>



Part of the Geology Commons

WMU ScholarWorks Citation

MGRRE, "MGRRE_PureOilScoutTickets_RABB, MARY_12_21051044660000" (2021). *Legacy Scout Tickets from Pure Oil Company*. 2075.

<https://scholarworks.wmich.edu/pure/2075>

This Document is brought to you for free and open access via ScholarWorks at WMU. It has been accepted for inclusion in Legacy Scout Tickets from Pure Oil Company by an authorized administrator of ScholarWorks at WMU. See the National Digital Catalogue - Science Base Catalogue for more collections submitted by MGRRE.



MGRRE_PureOilScoutTickets_RABB, MARY_12_21051044660000

API 21051044660000

Permit Number 4466

Lease Name RABB, MARY

Well Number 12

County Gladwin

Township 18N

Range 1W

Section 10

2021 DEQ or Pure co_name T AND E INVESTMENTS

Pure Number 401

Latitude 43.9688417

Longitude -84.4176608

THE PURE OIL COMPANY

LOCATION REPORT

DATE September 9, 1937

No. 401

STATE Michigan COUNTY Gladwin DIST. Buckeye SEC. 10 TOWN 18 N RANGE 1 W

WELL No. 12 (SERIAL No. 401) FARM Mary Rabb ACRES

NAME OF STREAM OR WATERS QUADRANGLE NE SE NW

OPERATOR Sun Oil Company Map Buckeye Township, Gladwin County

330 Feet from North Line of Farm

" " East " " "

" " South " " "

330 " " West " " "

Feet from North Line of Section

330 " " East " 1/4 "

990 " " South " 1/4 "

" " West " " "

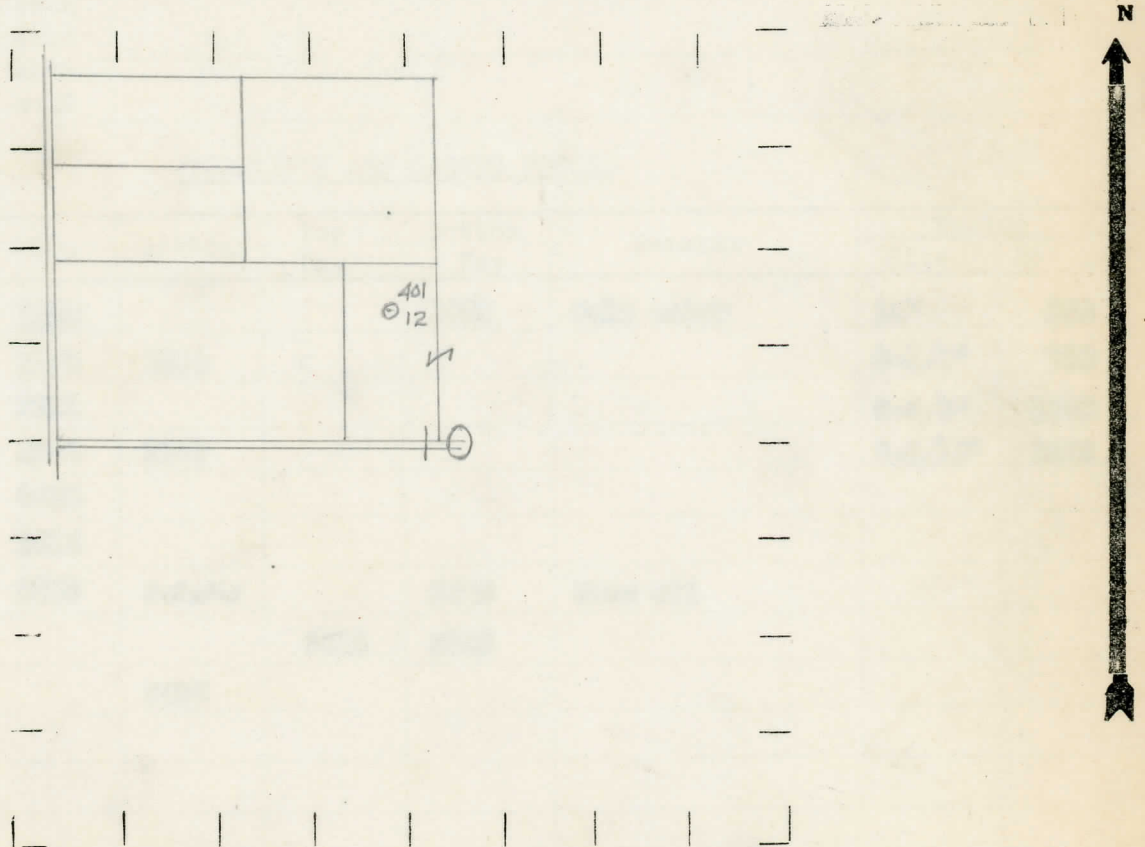
Loc

- LOCATION
- ⊙ RIG
- ⊕ DRILLING
- ☀ GAS WELL
- OIL WELL
- ⊖ SMALL OIL WELL

LEGEND

- ⊖ DRY HOLE
- ⊖ DRY SHOWING OIL
- ☀ DRY SHOWING GAS
- ⊖ ABANDONED LOCATION
- ☀ ABANDONED GAS WELL
- ⊖ ABANDONED OIL WELL

NOTE: Below make tracing from map, (when no map is obtainable make sketch) showing farm, center of section, this location with measurements and also wells, dry holes, or other locations in the vicinity of this location.



REMARKS:

SIGNED

Superintendent or Foreman.

COMPLETION RECORD OF WELLS DRILLED BY OTHER OPERATORS

Michigan Producing Division

Date January 8, 1938 No. 401
 State Michigan County Gladwin Dist. Buckeye Twp. 10 Sec. 18 N Rge. 1 W
 Well No. 12 (Serial No.) (County No.) 401 Farm Mary Rabb Acres _____
 Operator Sun Oil Company Information secured by Scouting Department
 Date well started 10-9-37 Date well completed 11-21-37 Elevation 759.2

PRODUCTION RECORD

1st 24 hours natural Est. 300 Barrels
 2nd 24 hours natural _____
 Date of shot _____ No. of quarts _____ From _____ to _____ From _____ to _____
 Date of acid _____ No. of gallons _____
 1st 24 hours after acid shot
 2nd 24 hours after acid shot

FORMATION AND CASING RECORD

Formation	Top	Bottom	Top Pay	Bottom Pay	Remarks	Casing	
						Size	Set
Marshall	1020			1023	Salt water	10"	258
Red Rock	1140	1200				8-1/4"	750
Sunbury	2221					6-5/8"	1250
Berea	2248	2330				5-3/16"	3572
Antrim	2335						
Traverse	2815						
Dundee	3555	S.L.M.		3609	Show oil		
			3615	3625			
Total Depth		3655					

Remarks _____

Signed D. C. Shackelford