



Western Michigan University
ScholarWorks at WMU

Legacy Scout Tickets from Pure Oil Company

8-20-2021

**MGRRE_PureOilScoutTickets_DORMA,
STEVE_1_21051045040000**

MGRRE
Western Michigan University

Follow this and additional works at: <https://scholarworks.wmich.edu/pure>



Part of the Geology Commons

WMU ScholarWorks Citation

MGRRE, "MGRRE_PureOilScoutTickets_DORMA, STEVE_1_21051045040000" (2021). *Legacy Scout Tickets from Pure Oil Company*. 2091.
<https://scholarworks.wmich.edu/pure/2091>

This Document is brought to you for free and open access via ScholarWorks at WMU. It has been accepted for inclusion in Legacy Scout Tickets from Pure Oil Company by an authorized administrator of ScholarWorks at WMU. See the National Digital Catalogue - Science Base Catalogue for more collections submitted by MGRRE.



MGRRE_PureOilScoutTickets_DORMA, STEVE_1_21051045040000

API 21051045040000

Permit Number 4504

Lease Name DORMA, STEVE

Well Number 1

County Gladwin

Township 18N

Range 1W

Section 4

2021 DEQ or Pure co_name VOORHEES DRILLING CO

Pure Number 417

Latitude 43.98459

Longitude -84.43264

The Pure Oil Company
THE PURE OIL COMPANY

DATE Sept. 23, 1937

LOCATION REPORT

No. 417

STATE Michigan COUNTY Gladwin

DIST. Buckeye

SEC. 4

TOWN 18-N RANGE 1-W

WELL No. 1 (SERIAL No. 417) FARM

TWP. Buckeye
PREC. Steve Dorma
Steve Dorma

ACRES

NAME OF STREAM OR WATERS

QUADRANGLE SE-NW-NE
SE-NW-NE

OPERATOR Voorhees Drlg. Co.

Map Buckeye Twp., Gladwin County

Voorhees-Drlg. Co.

Buckeye-Glad.

Feet from North Line of Farm

330 330 " " East " " "

330 330 " " South " " "

" " West " " "

Feet from North Line of Section

" " East " " "

" " South " " "

990 990 " " West " 1/4 "

LEGEND

○ LOCATION

⊙ DRY HOLE

⊕ RIG

● DRY SHOWING OIL

⊕ DRILLING

⊙ DRY SHOWING GAS

☀ GAS WELL

⊙ ABANDONED LOCATION

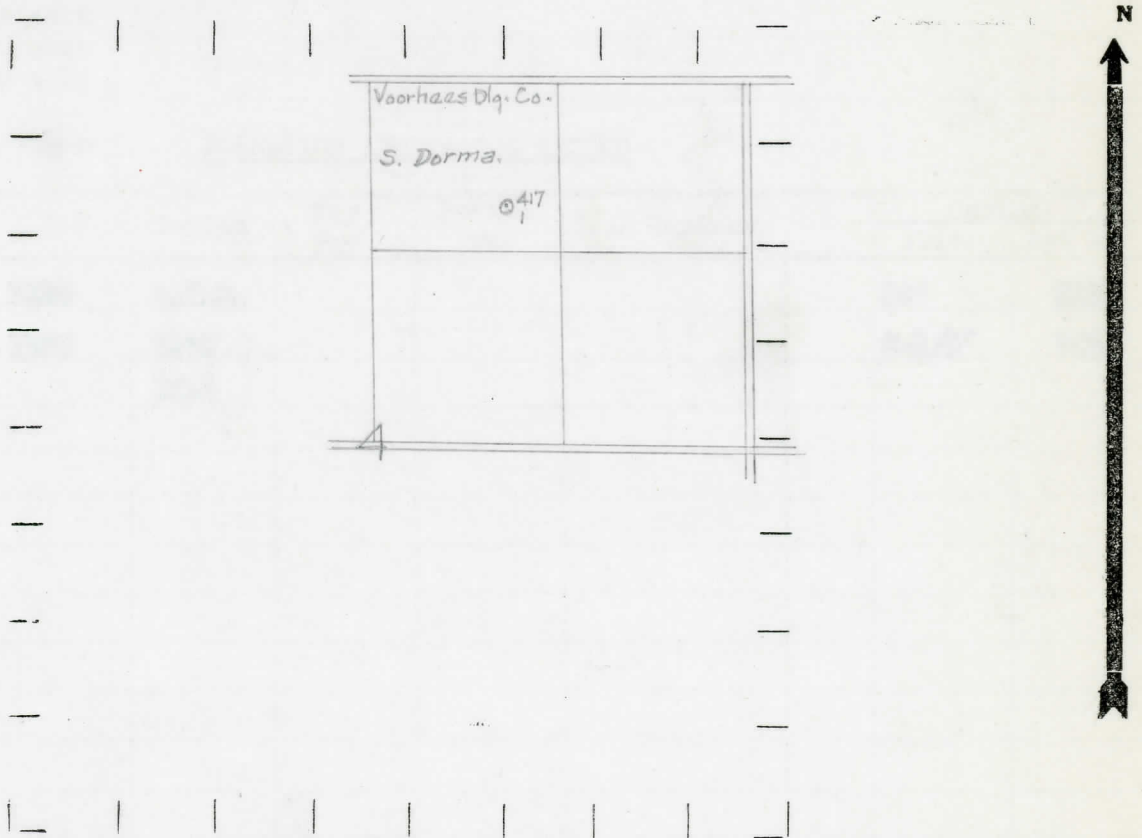
● OIL WELL

☀ ABANDONED GAS WELL

⬮ SMALL OIL WELL

● ABANDONED OIL WELL

NOTE: Below make tracing from map, (when no map is obtainable make sketch) showing farm, center of section, this location with measurements and also wells, dry holes, or other locations in the vicinity of this location.



REMARKS:

SIGNED

R. L. Yeager

Superintendent or Foreman.

