



Western Michigan University
ScholarWorks at WMU

Legacy Scout Tickets from Pure Oil Company

8-20-2021

**MGRRE_PureOilScoutTickets_KINYON, CHARLES
W._1_21051045160000**

MGRRE
Western Michigan University

Follow this and additional works at: <https://scholarworks.wmich.edu/pure>



Part of the Geology Commons

WMU ScholarWorks Citation

MGRRE, "MGRRE_PureOilScoutTickets_KINYON, CHARLES W._1_21051045160000" (2021). *Legacy Scout Tickets from Pure Oil Company*. 2094.
<https://scholarworks.wmich.edu/pure/2094>

This Document is brought to you for free and open access via ScholarWorks at WMU. It has been accepted for inclusion in Legacy Scout Tickets from Pure Oil Company by an authorized administrator of ScholarWorks at WMU. See the National Digital Catalogue - Science Base Catalogue for more collections submitted by MGRRE.



MGRRE_PureOilScoutTickets_KINYON, CHARLES W._1_21051045160000

API 21051045160000

Permit Number 4516

Lease Name KINYON, CHARLES W.

Well Number 1

County Gladwin

Township 18N

Range 2E

Section 18

2021 DEQ or Pure co_name ROSS W E

Pure Number 420

Latitude 43.9698781

Longitude -84.274954

The Pure Oil Company
THE PURE OIL COMPANY

DATE Sept. 30, 1937

LOCATION REPORT

No. 420

STATE Michigan

COUNTY Gladwin

DIST. Crimm

SEC. 18

TOWN 18 N

RANGE 2 E

WELL No. 1 (SERIAL No. 420) FARM

PREC. Chas. W. Kinyon

ACRES

NAME OF STREAM OR WATERS

QUADRANGLE NW-NW-NE

OPERATOR W. E. Ross, Tr.

Map Crimm Twp., Gladwin County

330 330 Feet from North Line of Farm

“ “ East “ “ “

“ “ South “ “ “

330 330 “ “ West “ “ “

330 330 Feet from North Line of Section

“ “ East “ “ “

“ “ South “ “ “

330 330 “ “ West “ “ $\frac{1}{4}$ “

LEGEND

○ LOCATION

⊕ RIG

⊕ DRILLING

☼ GAS WELL

● OIL WELL

● SMALL OIL WELL

○ DRY HOLE

● DRY SHOWING OIL

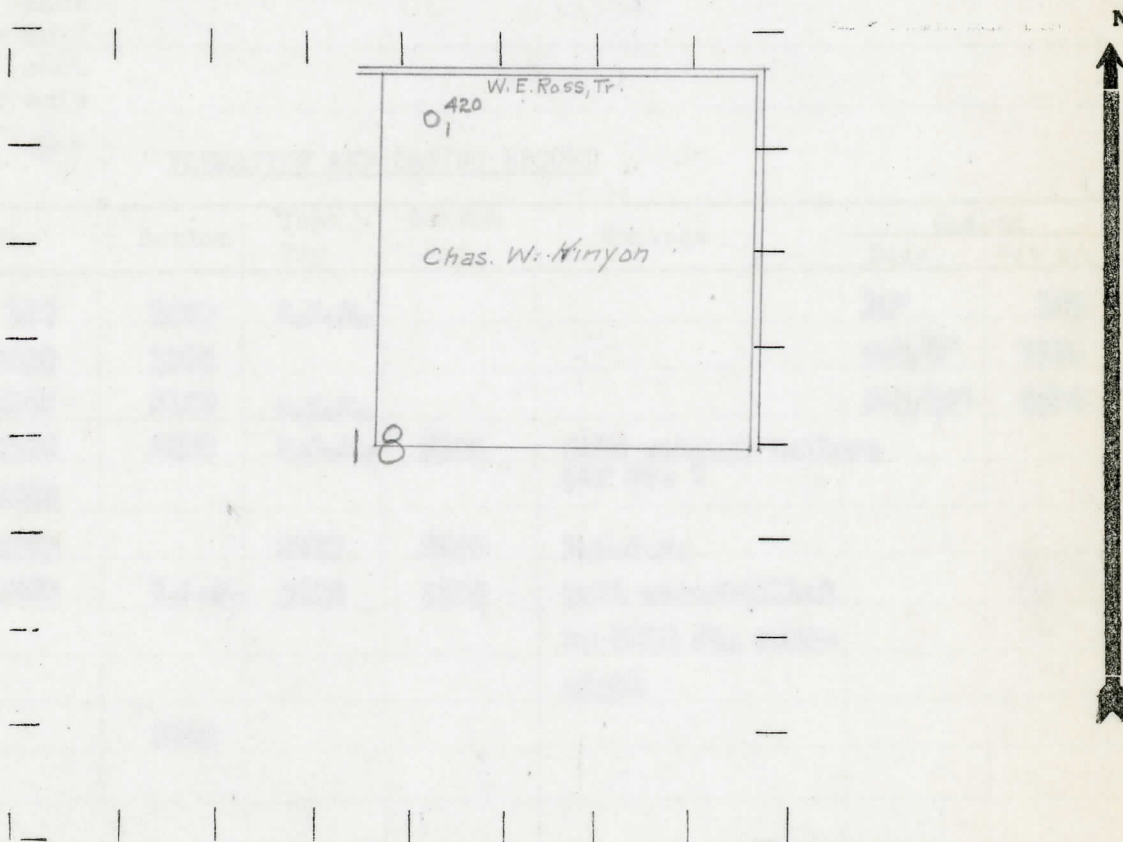
○ DRY SHOWING GAS

○ ABANDONED LOCATION

☼ ABANDONED GAS WELL

● ABANDONED OIL WELL

NOTE: Below make tracing from map, (when no map is obtainable make sketch) showing farm, center of section, this location with measurements and also wells, dry holes, or other locations in the vicinity of this location.



REMARKS:

SIGNED

R. A. [Signature]

Superintendent of Foreman.

COMPLETION RECORD OF WELLS DRILLED BY OTHER OPERATORS

Michigan Producing Division

Date June 23, 1938 No. 420
 State Mich. County Gladwin Dist. Grin Twp. 18 N Rge. 2 E
 (Serial No.)
 Well No. 1 (County No.) 420 Farm Chas. W. Kinyon Acres _____
 Operator W. E. Ross, Trustee Information secured From Scouting Department
 Date well started 12-15-37 Date well completed 6-21-38 Elevation 726.5

PRODUCTION RECORD

1st 24 hours natural Dry Hole
 2nd 24 hours natural _____
 Date of shot _____ No. of quarts _____ From _____ to _____ From _____ to _____
 Date of acid _____ No. of gallons _____
 shot _____
 1st 24 hours after acid _____
 shot _____
 2nd 24 hours after acid _____

FORMATION AND CASING RECORD

Formation	Top	Bottom	Top Pay	Bottom Pay	Remarks	Casing	
						Size	Set at
Marshall	910	1020	S.L.M.			10"	156
Red Rock	1020	1069				6-5/8"	1113
Sunbury	2143	2156	S.L.M.			5-3/16"	3505
Berea	2156	2263	S.L.M.	2200	Salt water-2 bailers per hr. ?		
Antrim	2263						
Traverse	2720		2910	2920	H.F.S.W.		
Dundee	3500	S.L.M.	3595	3609	Salt water-filled up 3000 ft. overnight		
Total Depth		3609					

Remarks Salt water 3104-3111' - salt water 3111'-3117'. This well had a flow of salt water in the Traverse amounting to 20,000 barrels daily.

Signed D. C. Shackelford