



Western Michigan University  
ScholarWorks at WMU

---

Legacy Scout Tickets from Pure Oil Company

---

8-20-2021

**MGRRE\_PureOilScoutTickets\_WOODRING\_4\_21051045800000**

MGRRE

*Western Michigan University*

Follow this and additional works at: <https://scholarworks.wmich.edu/pure>



Part of the Geology Commons

---

#### **WMU ScholarWorks Citation**

MGRRE, "MGRRE\_PureOilScoutTickets\_WOODRING\_4\_21051045800000" (2021). *Legacy Scout Tickets from Pure Oil Company*. 2120.

<https://scholarworks.wmich.edu/pure/2120>

This Document is brought to you for free and open access via ScholarWorks at WMU. It has been accepted for inclusion in Legacy Scout Tickets from Pure Oil Company by an authorized administrator of ScholarWorks at WMU. See the National Digital Catalogue - Science Base Catalogue for more collections submitted by MGRRE.



---

**MGRRE\_PureOilScoutTickets\_WOODRING\_4\_21051045800000**

API 21051045800000

Permit Number 4580

Lease Name WOODRING

Well Number 4

County Gladwin

Township 18N

Range 1W

Section 23

2021 DEQ or Pure co\_name SUMMIT PETROLEUM CORP

Pure Number 446

Latitude 43.9306187

Longitude -84.3893894

The Pure Oil Company  
THE PURE OIL COMPANY

DATE October 21, 1937

LOCATION REPORT

No. 446

STATE Michigan COUNTY Gladwin DIST. Buckeye TWP. Buckeye SEC. 23 TOWN 18 N RANGE 1 W

WELL No. 44 (SERIAL No. 446) FARM A. Woodring ACRES

NAME OF STREAM OR WATERS QUADRANGLE SW-SE-SE

OPERATOR Elzie S. Beaver, Trustee Map Buckeye Township, Gladwin County  
Elzie S. Beaver, Tr. Buckeye - Glad

Feet from North Line of Farm

990 990 " " East " " "

330 330 " " South " " "

" " West " " "

Feet from North Line of Section

990 990 " " East " " "

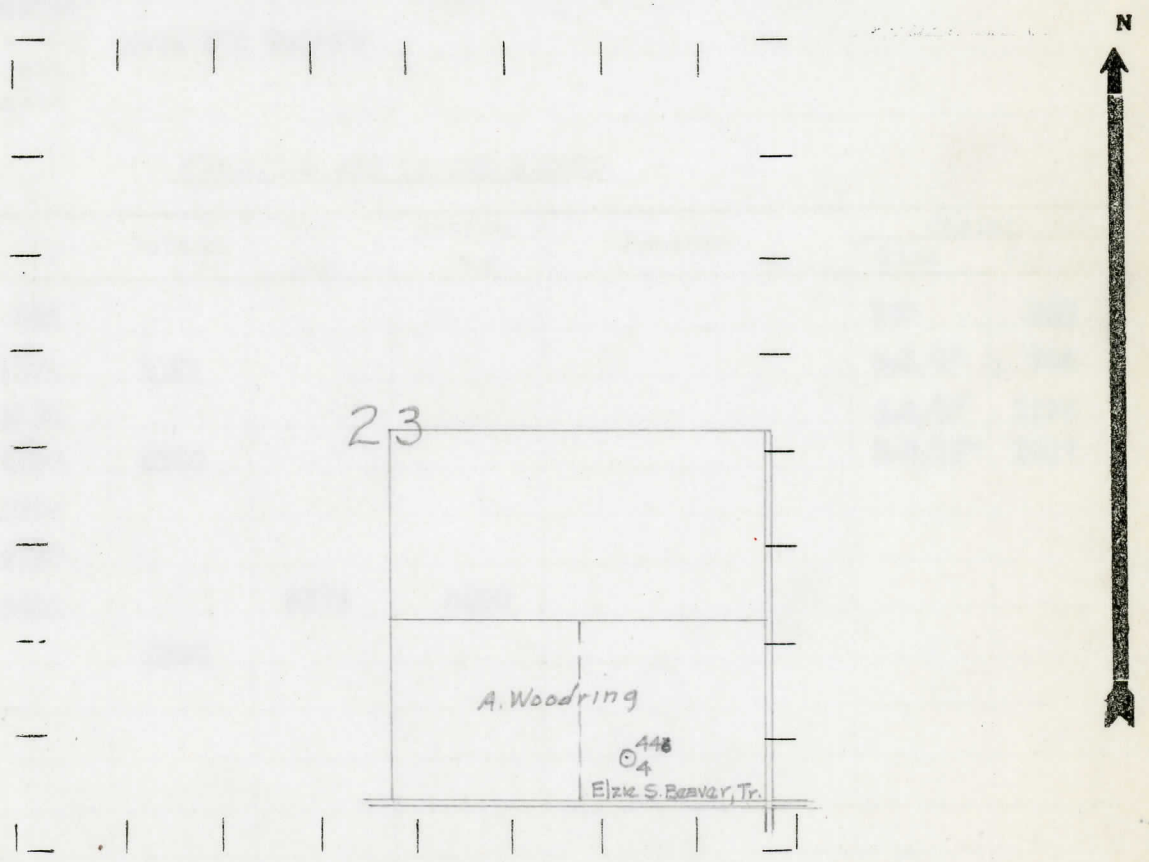
330 330 " " South " " "

" " West " " "

LEGEND

- LOCATION
- ⊙ RIG
- ⊕ DRILLING
- ☀ GAS WELL
- OIL WELL
- ⦿ SMALL OIL WELL
- ⊖ DRY HOLE
- ⦿ DRY SHOWING OIL
- ⊖ DRY SHOWING GAS
- ⊖ ABANDONED LOCATION
- ☀ ABANDONED GAS WELL
- ⦿ ABANDONED OIL WELL

NOTE: Below make tracing from map, (when no map is obtainable make sketch) showing farm, center of section, this location with measurements and also wells, dry holes, or other locations in the vicinity of this location.



REMARKS:

SIGNED

Superintendent or Foreman.

