



Western Michigan University
ScholarWorks at WMU

Legacy Scout Tickets from Pure Oil Company

8-20-2021

**MGRRE_PureOilScoutTickets_STROHKIRCH,
AMELIA_4_21051045990000**

MGRRE

Western Michigan University

Follow this and additional works at: <https://scholarworks.wmich.edu/pure>



Part of the Geology Commons

WMU ScholarWorks Citation

MGRRE, "MGRRE_PureOilScoutTickets_STROHKIRCH, AMELIA_4_21051045990000" (2021). *Legacy Scout Tickets from Pure Oil Company*. 2130.

<https://scholarworks.wmich.edu/pure/2130>

This Document is brought to you for free and open access via ScholarWorks at WMU. It has been accepted for inclusion in Legacy Scout Tickets from Pure Oil Company by an authorized administrator of ScholarWorks at WMU. See the National Digital Catalogue - Science Base Catalogue for more collections submitted by MGRRE.



MGRRE_PureOilScoutTickets_STROHKIRCH, AMELIA_4_21051045990000

API 21051045990000

Permit Number 4599

Lease Name STROHKIRCH, AMELIA

Well Number 4

County Gladwin

Township 18N

Range 1W

Section 10

2021 DEQ or Pure co_name T AND E INVESTMENTS CO OF MICHIGAN

Pure Number 456

Latitude 43.97063

Longitude -84.42022

THE PURE OIL COMPANY
LOCATION REPORT

DATE October 28, 1937

No. 456

STATE Michigan COUNTY Gladwin DIST. Buckeye TWP. Buckeye SEC. 10 TOWN 18 N RANGE 1 W

WELL No. 44 (SERIAL No. 456) FARM Amelia Strohkirch ACRES

NAME OF STREAM OR WATERS _____ QUADRANGLE SW NE NW

OPERATOR Sun Oil Company Map Buckeye Township, Gladwin County

Feet from North Line of Farm

99990 " " East " " "

330330 " " South " " "

990990 " " West " " "

Feet from North Line of Section

990990 " " East "1/4"

" " South " " "

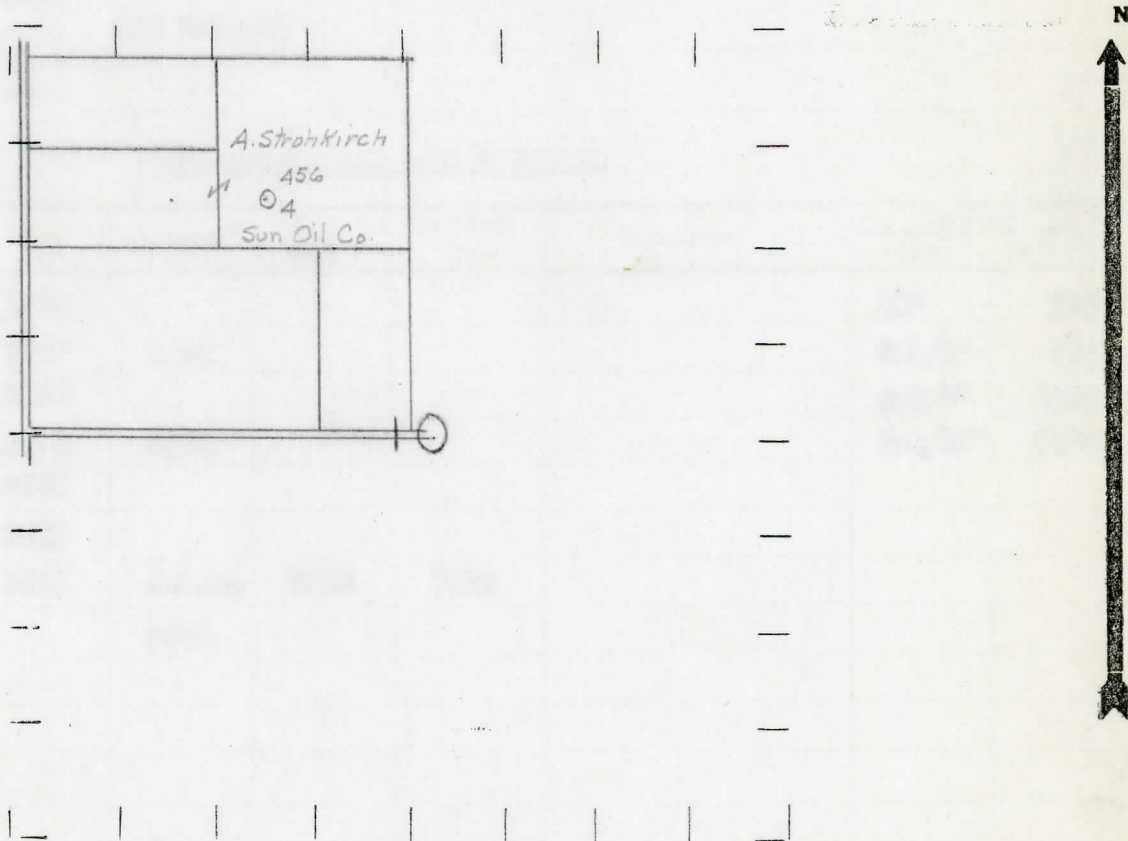
" " West " " "

Sp 10-27-37

LEGEND

- LOCATION
- ⊕ RIG
- ⊕ DRILLING
- ☀ GAS WELL
- OIL WELL
- SMALL OIL WELL
- ⊙ DRY HOLE
- ⊙ DRY SHOWING OIL
- ⊙ DRY SHOWING GAS
- ⊙ ABANDONED LOCATION
- ☀ ABANDONED GAS WELL
- ABANDONED OIL WELL

NOTE: Below make tracing from map, (when no map is obtainable make sketch) showing farm, center of section, this location with measurements and also wells, dry holes, or other locations in the vicinity of this location.



REMARKS:

SIGNED

R. L. Younger

Superintendent or Foreman.

COMPLETION RECORD OF WELLS DRILLED BY OTHER OPERATORS

Michigan Producing Division

Date December 22, 1937 No. 456
 State Michigan County Gladwin Dist. Buckeye Twp. 10 Sec. 10 Twp. 18 N Rge. 1 W
 Well No. 4 (Serial No.) (County No.) 456 Farm Amelia Strohdireh Acres _____
 Operator Sun Oil Company Information secured ~~from~~ Scouting Department by _____
 Date well started 10-27-37 Date well completed 12-15-37 Elevation 761.9

PRODUCTION RECORD

1st 24 hours natural 60 Barrels
 2nd 24 hours natural _____
 Date of shot _____ No. of quarts _____ From _____ to _____ From _____ to _____
 Date of acid 12-15-37 No. of gallons 1000
 1st 24 hours after acid 300 Barrels shot
 2nd 24 hours after acid _____ shot

FORMATION AND CASING RECORD

Formation	Top	Bottom	Top Pay	Bottom Pay	Remarks	Casing	
						Size	Set As
Marshall	1034					10"	210
Red Rock	1157	1196				8-1/4"	754
Sunbury	2250					6-5/8"	1250
Berea	2270	2335				5-3/16"	3576
Antrim	2360						
Traverse	2825						
Dundee	3568	S.L.M.	3625	3636			
Total Depth		3668					

Remarks _____

Signed D. C. Shackelford