



Western Michigan University
ScholarWorks at WMU

Legacy Scout Tickets from Pure Oil Company

8-20-2021

**MGRRE_PureOilScoutTickets_STROHKIRCH,
LOUIE_7_21051046790000**

MGRRE
Western Michigan University

Follow this and additional works at: <https://scholarworks.wmich.edu/pure>



Part of the Geology Commons

WMU ScholarWorks Citation

MGRRE, "MGRRE_PureOilScoutTickets_STROHKIRCH, LOUIE_7_21051046790000" (2021). *Legacy Scout Tickets from Pure Oil Company*. 2167.
<https://scholarworks.wmich.edu/pure/2167>

This Document is brought to you for free and open access via ScholarWorks at WMU. It has been accepted for inclusion in Legacy Scout Tickets from Pure Oil Company by an authorized administrator of ScholarWorks at WMU. See the National Digital Catalogue - Science Base Catalogue for more collections submitted by MGRRE.



MGRRE_PureOilScoutTickets_STROHKIRCH, LOUIE_7_21051046790000

API 21051046790000

Permit Number 4679

Lease Name STROHKIRCH, LOUIE

Well Number 7

County Gladwin

Township 18N

Range 1W

Section 10

2021 DEQ or Pure co_name T AND E INVESTMENTS CO OF MICHIGAN

Pure Number 493

Latitude 43.97252

Longitude -84.42257

The Pure Oil Company
THE PURE OIL COMPANY
COMPLETION RECORD OF WELLS DRILLED BY OTHER OPERATORS

DATE December 2, 1937

LOCATION REPORT

No. 493

STATE Michigan COUNTY Gladwin DIST. Buckeye TWP. Buckeye SEC. 10 TOWN 18 N RANGE 1 W

WELL No. 7 (SERIAL No. 493) FARM Louie Strohkirch ACRES

NAME OF STREAM OR WATERS QUADRANGLE NE NW NW

OPERATOR Sun Oil Company Map Buckeye Township, Gladwin County

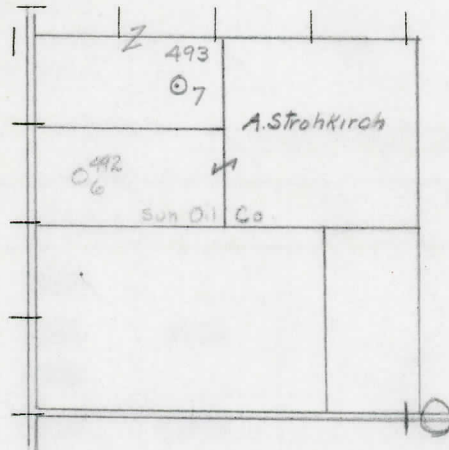
Sun Oil Co.
Feet from North Line of Farm
330 330 " " East " " "
330 330 " " South " " "
" " West " " "
330 330 Feet from North Line of Section
" " East " " "
" " South " " "
990 990 " " West " " "

Loc.

LEGEND

- LOCATION
- ⊕ RIG
- ⊕ DRILLING
- ☀ GAS WELL
- OIL WELL
- ⊕ SMALL OIL WELL
- ⊕ DRY HOLE
- ⊕ DRY SHOWING OIL
- ⊕ DRY SHOWING GAS
- ⊕ ABANDONED LOCATION
- ☀ ABANDONED GAS WELL
- ⊕ ABANDONED OIL WELL

NOTE: Below make tracing from map, (when no map is obtainable make sketch) showing farm, center of section, this location with measurements and also wells, dry holes, or other locations in the vicinity of this location.



REMARKS:

SIGNED

R. L. Yeager

Superintendent or Foreman.

DATE December 5th 1931

PRODUCTION RECORD

No. 403

COMPLETION RECORD OF WELLS DRILLED BY OTHER OPERATORS

Michigan Producing Division

Date March 3, 1938 No. 493
 State Michigan County Gladwin Twp. Buckeye Sec. 10 Twp. 18 N Rge. 1 W
 Well No. 7 (Serial No.) (County No.) 493 Farm Louie Strohkirch Acres _____
 Operator Sun Oil Company Information secured ~~from~~ Scouting Department by _____
 Date well started 1-8-38 Date well completed 2-28-38 Elevation 764.4

PRODUCTION RECORD

1st 24 hours natural Est. 700 Barrels (512 Bbls. in 16 hrs.)
 2nd 24 hours natural _____
 Date of shot _____ No. of quarts _____ From _____ to _____ From _____ to _____
 Date of acid _____ No. of gallons _____
 1st 24 hours after acid shot _____
 2nd 24 hours after acid shot _____

FORMATION AND CASING RECORD

Formation	Top	Bottom	Top Pay	Bottom Pay	Remarks	Casing	
						Size	Set At
Marshall	1023					10"	234
Red Rock	1150	1199				8-1/4"	770
Sunbury	2232					6-5/8"	1250
Berea	2275	2344				5-3/16"	3564
Antrim	2344						
Traverse	2818						
Dundee	3557	S.L.M.	3615	3629	(Corrected)		
			3637	3644	"		
Total Depth		3657					

Remarks _____

Signed D. G. Shackelford