



Western Michigan University  
ScholarWorks at WMU

---

Legacy Scout Tickets from Pure Oil Company

---

8-20-2021

**MGRRE\_PureOilScoutTickets\_STROHKIRCH,  
LOUIE\_8\_21051046800000**

MGRRE

*Western Michigan University*

Follow this and additional works at: <https://scholarworks.wmich.edu/pure>



Part of the Geology Commons

---

#### **WMU ScholarWorks Citation**

MGRRE, "MGRRE\_PureOilScoutTickets\_STROHKIRCH, LOUIE\_8\_21051046800000" (2021). *Legacy Scout Tickets from Pure Oil Company*. 2168.

<https://scholarworks.wmich.edu/pure/2168>

This Document is brought to you for free and open access via ScholarWorks at WMU. It has been accepted for inclusion in Legacy Scout Tickets from Pure Oil Company by an authorized administrator of ScholarWorks at WMU. See the National Digital Catalogue - Science Base Catalogue for more collections submitted by MGRRE.



---

**MGRRE\_PureOilScoutTickets\_STROHKIRCH, LOUIE\_8\_21051046800000**

API 21051046800000

Permit Number 4680

Lease Name STROHKIRCH, LOUIE

Well Number 8

County Gladwin

Township 18N

Range 1W

Section 3

2021 DEQ or Pure co\_name ORYX ENERGY CO

Pure Number 494

Latitude 43.97426

Longitude -84.42026

The Pure Oil Company  
COMPLETION RECORD THE PURE OIL COMPANY OTHER OPERATORS

DATE December 2, 1937

LOCATION REPORT

No. 494

STATE Michigan

COUNTY Gladwin

DIST. Buckeye  
TWP. Buckeye

SEC. 3

TOWN 18 N

RANGE 1 W

WELL No. 8 (SERIAL No. 494) FARM

Louie Strohkirch

ACRES

NAME OF STREAM OR WATERS

QUADRANGLE SW SE SW

OPERATOR Sun Oil Company

Map Buckeye Township, Gladwin County

Feet from North Line of Farm

990990 " " East " " "

330 330 " " South " " "

Feet from North Line of Section

990990 " " East 1/4 " "

330 330 " " South " " "

" " West " " "

LEGEND

○ LOCATION

⊙ DRY HOLE

⊕ RIG

⊙ DRY SHOWING OIL

⊕ DRILLING

⊙ DRY SHOWING GAS

⊙ GAS WELL

⊙ ABANDONED LOCATION

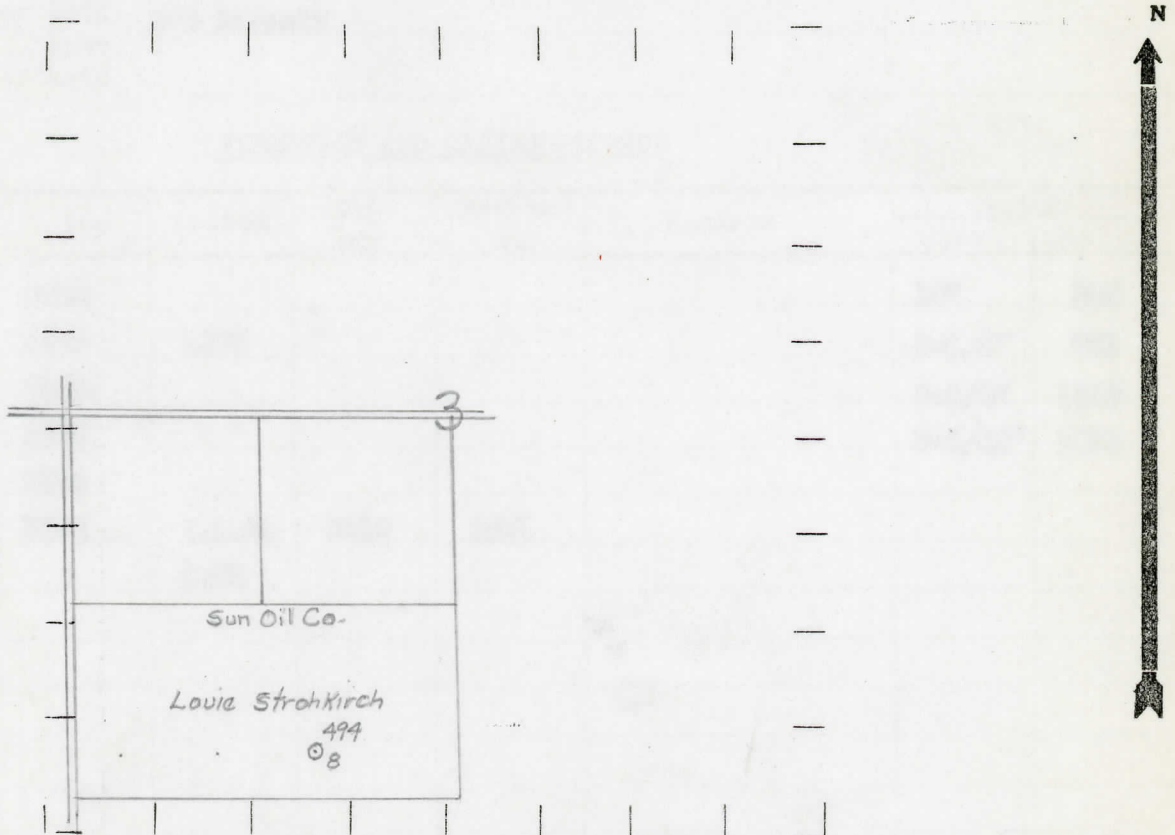
● OIL WELL

⊙ ABANDONED GAS WELL

⊙ SMALL OIL WELL

⊙ ABANDONED OIL WELL

NOTE: Below make tracing from map, (when no map is obtainable make sketch) showing farm, center of section, this location with measurements and also wells, dry holes, or other locations in the vicinity of this location.



REMARKS:

SIGNED

R. L. Yeager  
Superintendent or Foreman.

