



Western Michigan University
ScholarWorks at WMU

Legacy Scout Tickets from Pure Oil Company

8-20-2021

MGRRE_PureOilScoutTickets_State Bank of Beaverton _1_na

MGRRE

Western Michigan University

Follow this and additional works at: <https://scholarworks.wmich.edu/pure>



Part of the Geology Commons

WMU ScholarWorks Citation

MGRRE, "MGRRE_PureOilScoutTickets_State Bank of Beaverton _1_na" (2021). *Legacy Scout Tickets from Pure Oil Company*. 2176.

<https://scholarworks.wmich.edu/pure/2176>

This Document is brought to you for free and open access via ScholarWorks at WMU. It has been accepted for inclusion in Legacy Scout Tickets from Pure Oil Company by an authorized administrator of ScholarWorks at WMU. See the National Digital Catalogue - Science Base Catalogue for more collections submitted by MGRRE.



MGRRE_PureOilScoutTickets_State Bank of Beaverton _1_na

API na

Permit Number na

Lease Name State Bank of Beaverton

Well Number 1

County Gladwin

Township 18N

Range 1E

Section 16

2021 DEQ or Pure co_name Rowman Corp Swanson Oil Co

Pure Number 502

Latitude 43.9647513

Longitude -84.3567699

DATE December 2, 1937

LOCATION REPORT

No. 502

STATE Michigan COUNTY Gladwin DIST. Hay TWP. Hay SEC. 16 TOWN. 18 N RANGE 1 E

WELL No. 1 (SERIAL No. 502) FARM State Bank of Beaverton ACRES

NAME OF STREAM OR WATERS _____ QUADRANGLE NW SE SW

OPERATOR Swanson Consolidated Oil Company Map Hay Township, Gladwin County

330 330 Feet from North Line of Farm
" " East " " "

330 330 " " South " " "
" " West " " "

Feet from North Line of Section
990 990 " " East 1/4 "

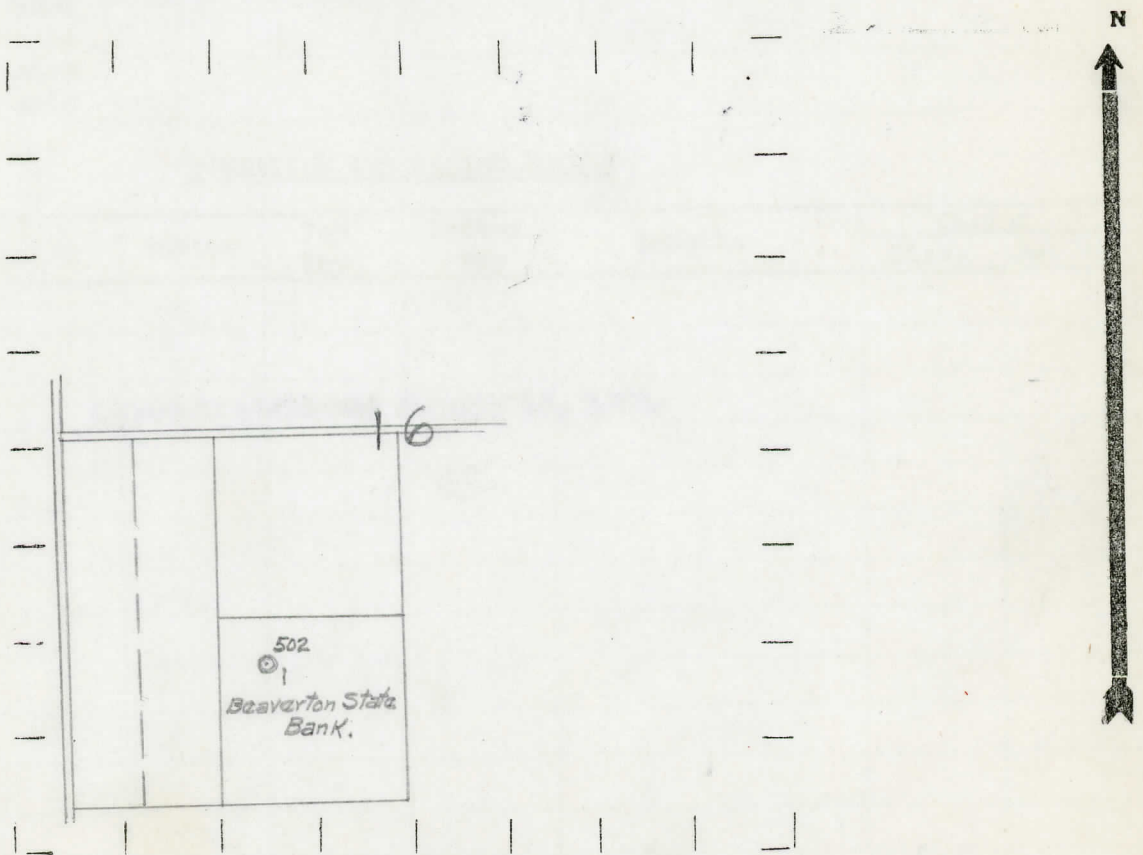
990 990 " " South " " "
" " West " " "



LEGEND

- LOCATION
- ⊙ RIG
- ⊕ DRILLING
- ☀ GAS WELL
- OIL WELL
- ⦿ SMALL OIL WELL
- ⊖ DRY HOLE
- ⦿ DRY SHOWING OIL
- ⊖ DRY SHOWING GAS
- ⊖ ABANDONED LOCATION
- ☀ ABANDONED GAS WELL
- ⦿ ABANDONED OIL WELL

NOTE: Below make tracing from map. (when no map is obtainable make sketch) showing farm, center of section, this location with measurements and also wells, dry holes, or other locations in the vicinity of this location.



REMARKS:

SIGNED

R. H. Yeager
Superintendent or Foreman.

