



Western Michigan University
ScholarWorks at WMU

Legacy Scout Tickets from Pure Oil Company

8-20-2021

**MGRRE_PureOilScoutTickets_JOHNSON ET
AL_1_21051048810000**

MGRRE
Western Michigan University

Follow this and additional works at: <https://scholarworks.wmich.edu/pure>



Part of the Geology Commons

WMU ScholarWorks Citation

MGRRE, "MGRRE_PureOilScoutTickets_JOHNSON ET AL_1_21051048810000" (2021). *Legacy Scout Tickets from Pure Oil Company*. 2238.
<https://scholarworks.wmich.edu/pure/2238>

This Document is brought to you for free and open access via ScholarWorks at WMU. It has been accepted for inclusion in Legacy Scout Tickets from Pure Oil Company by an authorized administrator of ScholarWorks at WMU. See the National Digital Catalogue - Science Base Catalogue for more collections submitted by MGRRE.



MGRRE_PureOilScoutTickets_JOHNSON ET AL_1_21051048810000

API 21051048810000

Permit Number 4881

Lease Name JOHNSON ET AL

Well Number 1

County Gladwin

Township 18N

Range 1W

Section 23

2021 DEQ or Pure co_name OVESHIRE L L

Pure Number 564

Latitude 43.93776

Longitude -84.38698

The Pure Oil Company
THE PURE OIL COMPANY

DATE March 24, 1938

LOCATION REPORT

No. 564

STATE Michigan COUNTY Gladwin DIST. Buckeye TWP. Buckeye SEC. 23 TOWN 18 N RANGE 1 W

WELL No. 1 (SERIAL No. 564) FARM Caryl F. Johnson, et al ACRES

NAME OF STREAM OR WATERS _____ QUADRANGLE SE-SE-NE SE SE NE

OPERATOR L. L. Ovenshire Map Buckeye Township, Gladwin County

L.L. Ovenshire
Feet from North Line of Farm

330330 " " East " " "

330330 " " South " " "

" " West " " "

Feet from North Line of Section

330330 " " East " " "

330330 " " South " 1/4 "

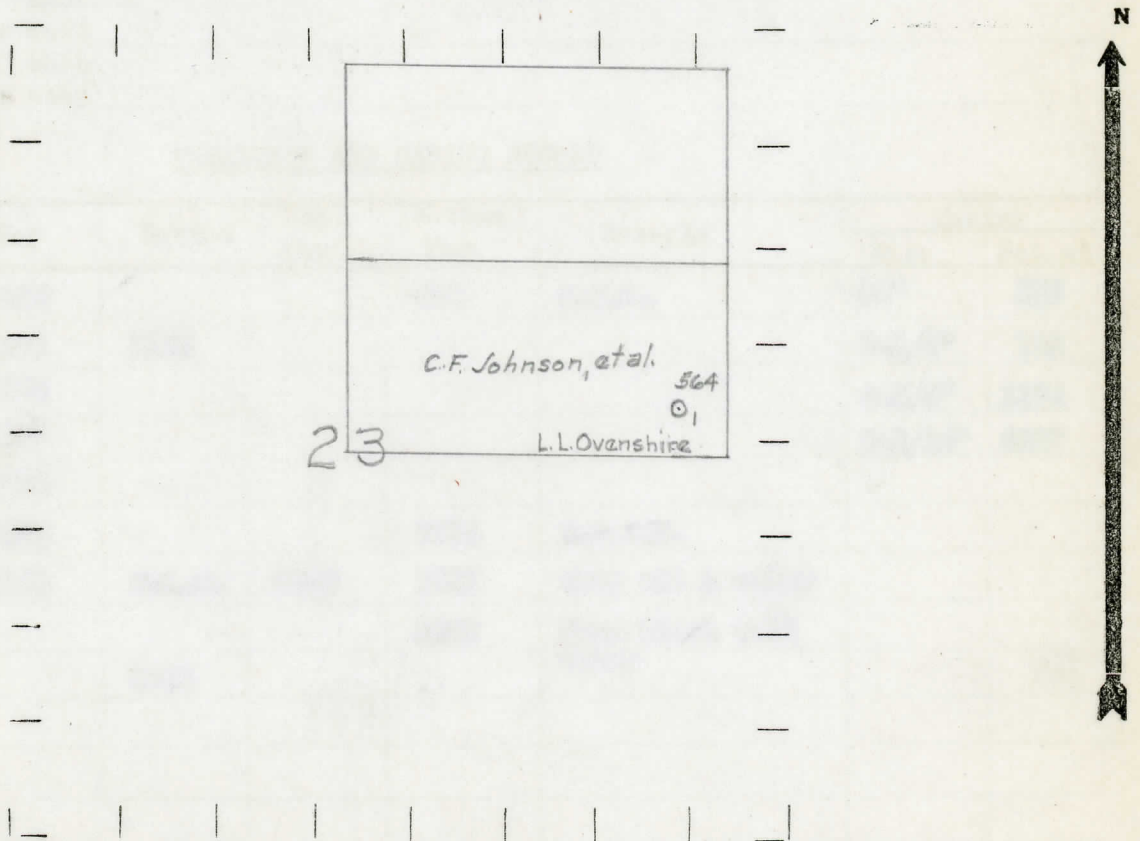
" " West " " "

- LOCATION
- ⊕ RIG
- ⊕ DRILLING
- ☀ GAS WELL
- OIL WELL
- ⊕ SMALL OIL WELL

LEGEND

- ⊕ DRY HOLE
- ⊕ DRY SHOWING OIL
- ⊕ DRY SHOWING GAS
- ⊕ ABANDONED LOCATION
- ☀ ABANDONED GAS WELL
- ⊕ ABANDONED OIL WELL

NOTE: Below make tracing from map, (when no map is obtainable make sketch) showing farm, center of section, this location with measurements and also wells, dry holes, or other locations in the vicinity of this location.



REMARKS:

SIGNED

R. L. Yeager
Superintendent or Foreman.

COMPLETION RECORD OF WELLS DRILLED BY OTHER OPERATORS

Michigan Producing Division

Date July 14, 1938 No. 564
 State Michigan County Gladwin Dist. Buckeye Twp. 13 N Sec. 23 Rge. 1 W
 (Serial No.)
 Well No. 1 (County No.) 564 Farm Carl F. Johnson, et al Acres
 Operator L. L. Owenshire Information secured By Scouting Department
 Date well started 6-1-38 Date well completed 7-5-38 Elevation 737.5

PRODUCTION RECORD

1st 24 hours natural Dry Hole
 2nd 24 hours natural
 Date of shot No. of quarts From to From to
 Date of acid No. of gallons
 shot
 1st 24 hours after acid
 shot
 2nd 24 hours after acid

FORMATION AND CASING RECORD

Formation	Top	Bottom	Top Pay	Bottom Pay	Remarks	Casing	
						Size	Set at
Marshall	966			970	H.F.W.	10"	212
Red Rock	1091	1148				8-1/4"	752
Sunbury	2173					6-5/8"	1174
Berea	2197					5-3/16"	3557
Antrim	2292						
Traverse	2774			2914	H.F.S.W.		
Dundee	3551	S.L.M.	3626	3627	Show oil & water		
				3662	Show black salt water		
Total Depth		3700					

Remarks

Signed D. C. Shackelford