



Western Michigan University  
ScholarWorks at WMU

---

Legacy Scout Tickets from Pure Oil Company

---

8-20-2021

**MGRRE\_PureOilScoutTickets\_WINEMAN  
ESTATE\_1\_21051050170000**

MGRRE

*Western Michigan University*

Follow this and additional works at: <https://scholarworks.wmich.edu/pure>



Part of the Geology Commons

---

#### **WMU ScholarWorks Citation**

MGRRE, "MGRRE\_PureOilScoutTickets\_WINEMAN ESTATE\_1\_21051050170000" (2021). *Legacy Scout Tickets from Pure Oil Company*. 2266.

<https://scholarworks.wmich.edu/pure/2266>

This Document is brought to you for free and open access via ScholarWorks at WMU. It has been accepted for inclusion in Legacy Scout Tickets from Pure Oil Company by an authorized administrator of ScholarWorks at WMU. See the National Digital Catalogue - Science Base Catalogue for more collections submitted by MGRRE.



---

**MGRRE\_PureOilScoutTickets\_WINEMAN ESTATE\_1\_21051050170000**

API 21051050170000

Permit Number 5017

Lease Name WINEMAN ESTATE

Well Number 1

County Gladwin

Township 17N

Range 1E

Section 4

2021 DEQ or Pure co\_name MCCLANAHAN OIL CO

Pure Number 593

Latitude 43.90375

Longitude -84.35363

The Pure Oil Company  
 COMPLETION RECORD OF WELLS DRILLED BY OTHER OPERATORS

DATE May 12, 1938

LOCATION REPORT

No. 593

STATE Michigan COUNTY Gladwin DIST. Billings TWP. Billings SEC. 4 TOWN 17 N RANGE 1 E

WELL No. 1 (SERIAL No. 593) FARM Wineman Estate ACRES \_\_\_\_\_

NAME OF STREAM OR WATERS \_\_\_\_\_ QUADRANGLE NE SW SE

OPERATOR McClanahan Oil Company Map Billings Township, Gladwin County

330 330 Feet from North Line of Farm

" " East " " "

" " South " " "

990 990 " " West " " "

Feet from North Line of Section

" " East " " "

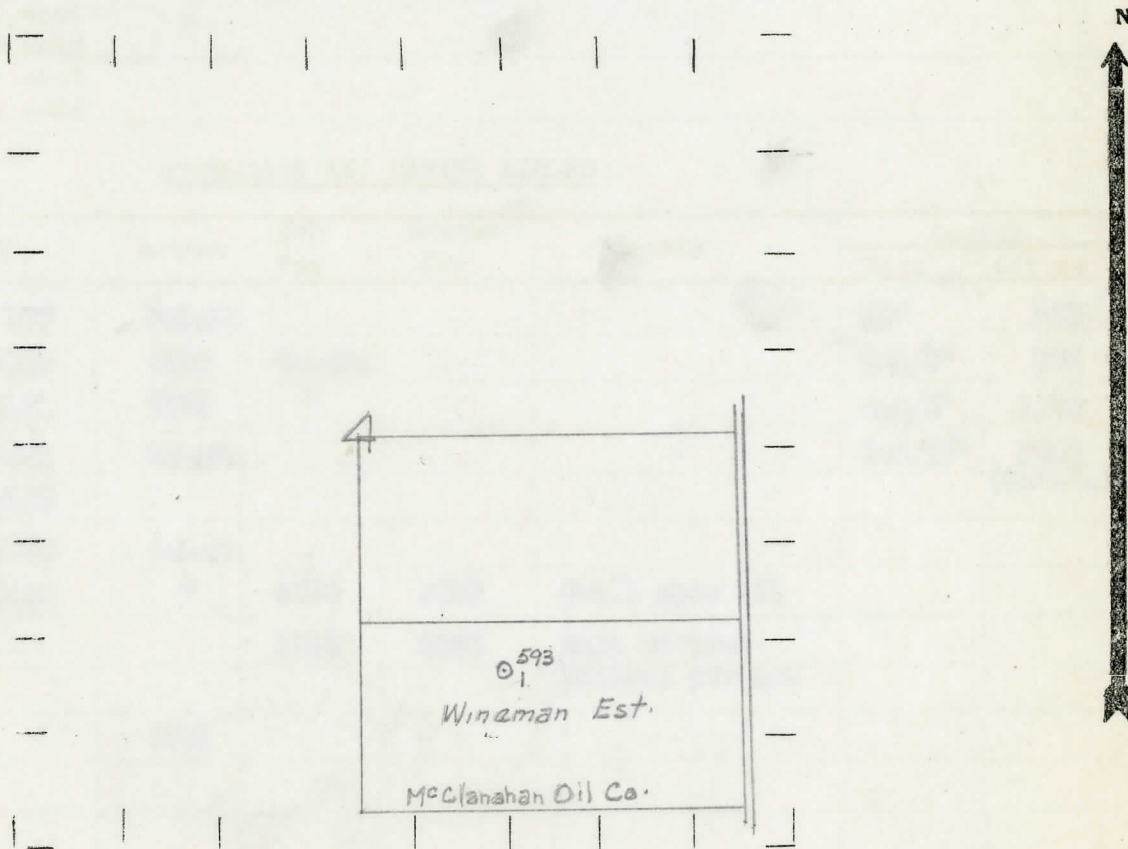
990 990 " " South " " "

990 990 " " West "1/4"

- LEGEND
- LOCATION
  - ⊙ RIG
  - ⊕ DRILLING
  - ☀ GAS WELL
  - OIL WELL
  - ⦿ SMALL OIL WELL

- ⊖ DRY HOLE
- ⦿ DRY SHOWING OIL
- ⦿ DRY SHOWING GAS
- ⦿ ABANDONED LOCATION
- ☀ ABANDONED GAS WELL
- ⦿ ABANDONED OIL WELL

NOTE: Below make tracing from map, (when no map is obtainable make sketch) showing farm, center of section, this location with measurements and also wells, dry holes, or other locations in the vicinity of this location.



REMARKS:

SIGNED \_\_\_\_\_

Superintendent or Foreman.

Michigan Producing Division

Date June 23, 1938 No. 593  
 State Michigan County Gladwin Dist. Billings Twp. 17 N Rge. 1 E  
 Well No. 1 (Serial No.) 593 Farm Wineman Estate Acres \_\_\_\_\_  
 Operator McClanahan Oil Company Information secured By Scouting Department  
 Date well started 5-17-38 Date well completed 6-21-38 Elevation 725.3

PRODUCTION RECORD

1st 24 hours natural Dry Hole  
 2nd 24 hours natural \_\_\_\_\_  
 Date of shot \_\_\_\_\_ No. of quarts \_\_\_\_\_ From \_\_\_\_\_ to \_\_\_\_\_ From \_\_\_\_\_ to \_\_\_\_\_  
 Date of acid \_\_\_\_\_ No. of gallons \_\_\_\_\_  
 shot \_\_\_\_\_  
 1st 24 hours after acid \_\_\_\_\_  
 shot \_\_\_\_\_  
 2nd 24 hours after acid \_\_\_\_\_

FORMATION AND CASING RECORD

Formation	Top	Bottom	Top Pay	Bottom Pay	Remarks	Casing	
						Size	Set at
Marshall	956	S.L.M.				10"	208
Red Rock	1073	1116	S.L.M.			8-1/4"	796
Sunbury	2161	2191	"			6-5/8"	1170
Berea	2191	S.L.M.				5-3/16"	3505 (S.L.M.)
Antrim	2290						
Traverse	2746	S.L.M.					
Dundee	3495	"	3588	3590	Small show oil		
			3812	3822	Salt water-3 bailers per hr.		
Total Depth		3822					

Remarks \_\_\_\_\_  
 \_\_\_\_\_  
 \_\_\_\_\_

Signed D. C. Shackelford