



Western Michigan University
ScholarWorks at WMU

Legacy Scout Tickets from Pure Oil Company

8-20-2021

MGRRE_PureOilScoutTickets_DAVIS_1_21051082840000

MGRRE

Western Michigan University

Follow this and additional works at: <https://scholarworks.wmich.edu/pure>



Part of the Geology Commons

WMU ScholarWorks Citation

MGRRE, "MGRRE_PureOilScoutTickets_DAVIS_1_21051082840000" (2021). *Legacy Scout Tickets from Pure Oil Company*. 2341.

<https://scholarworks.wmich.edu/pure/2341>

This Document is brought to you for free and open access via ScholarWorks at WMU. It has been accepted for inclusion in Legacy Scout Tickets from Pure Oil Company by an authorized administrator of ScholarWorks at WMU. See the National Digital Catalogue - Science Base Catalogue for more collections submitted by MGRRE.



MGRRE_PureOilScoutTickets_DAVIS_1_21051082840000

API 21051082840000

Permit Number 8284

Lease Name DAVIS

Well Number 1

County Gladwin

Township 17N

Range 2E

Section 17

2021 DEQ or Pure co_name BENTLEY OIL CO

Pure Number 679

Latitude 43.87889

Longitude -84.26405

THE PURE OIL COMPANY

DATE December 18, 1940

LOCATION REPORT

No. 679

STATE Michigan

COUNTY Gladwin

DIST. Bentley

TWP Bentley

SEC. 17

TOWN 17 N RANGE 3 E

WELL No. 1 (SERIAL No. 679) FARM

PREC. Davis

ACRES

NAME OF STREAM OR WATERS

QUADRANGLE C S 2 SW NW - NW

OPERATOR Bentley Oil Company

Map Bentley Township, Gladwin County

Bentley Oil Co

Bentley - Gladwin

Feet from North Line of Farm

660 660 " " East " " "

330 330 " " South " " "

660 660 " " West " " "

Feet from North Line of Section

" " East " " "

330 330 " " South " 1 1/4 "

660 660 " " West " " "

LEGEND

○ LOCATION

⊙ DRY HOLE

⊕ RIG

● DRY SHOWING OIL

⊕ DRILLING

⊙ DRY SHOWING GAS

☀ GAS WELL

⊙ ABANDONED LOCATION

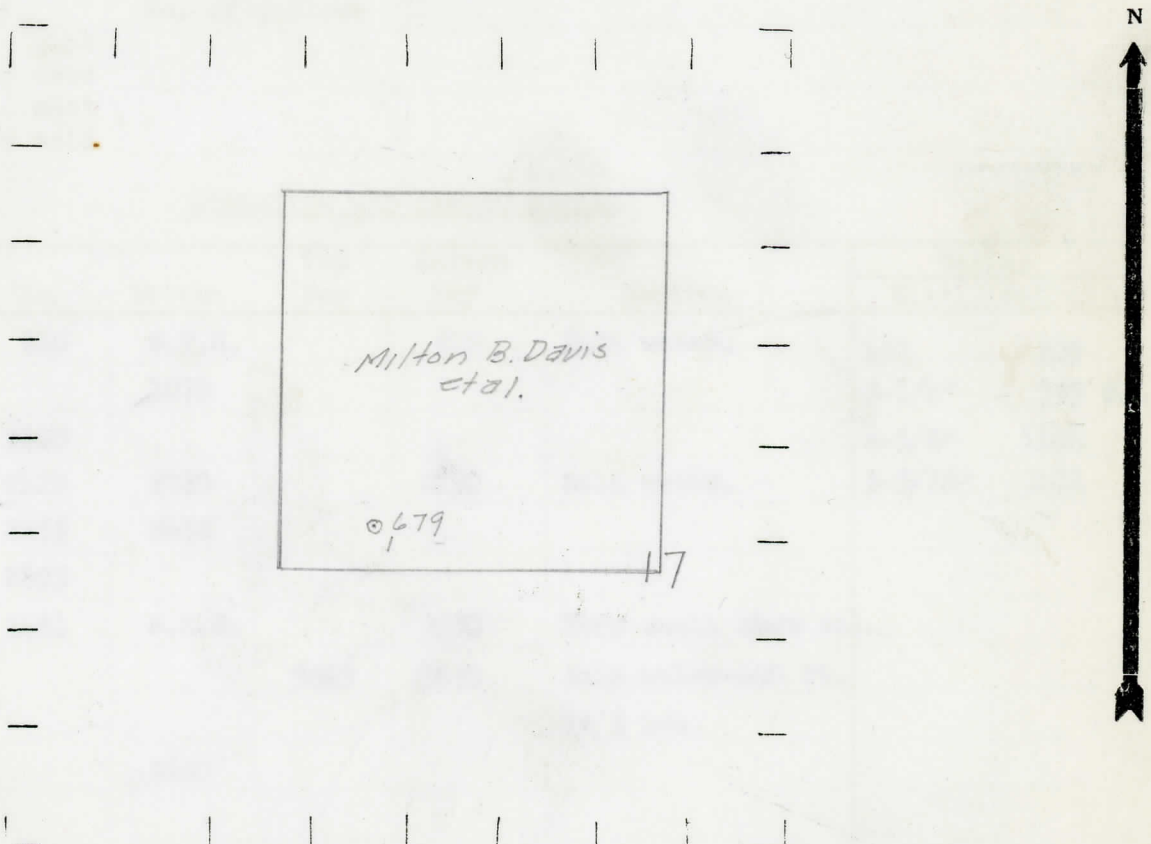
● OIL WELL

☀ ABANDONED GAS WELL

● SMALL OIL WELL

● ABANDONED OIL WELL

NOTE: Below make tracing from map, (when no map is obtainable make sketch) showing farm, center of section, this location with measurements and also wells, dry holes, or other locations in the vicinity of this location.



REMARKS:

SIGNED

W

Superintendent or Foreman.

Michigan Producing Division

Date **February 12, 1941** No. **679**
 State **Mich.** County **Gladwin** Dist. **Bentley**
 Twp. **Bentley** Sec. **17** Twp. **17 N** Rge. **2 E**
 Well No. **1** (Serial No. **679**) Farm **Davis** Acres
 Operator **Bentley Oil Company** Information secured ~~XXXX~~ By **Scouting Department**
 Date well started **1-2-41** Dated well completed **2-8-41** Elevation **717.3**

PRODUCTION RECORD

1st 24 hours natural **Dry Hole**
 2nd 24 hours natural
 Date of shot No. of quarts From to From to
 Date of acid No. of gallons
 1st 24 hours after acid shot
 2nd 24 hours after acid shot

FORMATION AND CASING RECORD

Formation	Top	Bottom	Top Pay	Bottom Pay	Remarks	Casing	
						Size	Set at
Marshall	910	C.T.M.		910	Salt water.	10"	207
Red Rock		1070				8-1/4"	755 S.L.M.
Sunbury	2100					6-5/8"	1104
Berea	2120	2220		2190	Salt water.	5-3/16"	3471
Antrim	2255	2688					
Traverse Line	2695						
Dundee	3461	S.L.M.		3550	Very small show oil.		
			3643	3650	Salt water-400 ft. in 5 hrs.		
Total Depth		3650					

Remarks **3442' C.T.M. equals 3453' S.L.M.**

Signed **D. C. Shackelford**