



Western Michigan University
ScholarWorks at WMU

Legacy Scout Tickets from Pure Oil Company

8-20-2021

**MGRRE_PureOilScoutTickets_CALDWELL STATE
HAY_1_21051099430000**

MGRRE
Western Michigan University

Follow this and additional works at: <https://scholarworks.wmich.edu/pure>



Part of the Geology Commons

WMU ScholarWorks Citation

MGRRE, "MGRRE_PureOilScoutTickets_CALDWELL STATE HAY_1_21051099430000" (2021). *Legacy Scout Tickets from Pure Oil Company*. 2374.
<https://scholarworks.wmich.edu/pure/2374>

This Document is brought to you for free and open access via ScholarWorks at WMU. It has been accepted for inclusion in Legacy Scout Tickets from Pure Oil Company by an authorized administrator of ScholarWorks at WMU. See the National Digital Catalogue - Science Base Catalogue for more collections submitted by MGRRE.



MGRRE_PureOilScoutTickets_CALDWELL STATE HAY_1_21051099430000

API 21051099430000

Permit Number 9943

Lease Name CALDWELL STATE HAY

Well Number 1

County Gladwin

Township 18N

Range 1E

Section 21

2021 DEQ or Pure co_name CALDWELL T F

Pure Number 712

Latitude 43.95223

Longitude -84.35517

THE PURE OIL COMPANY

LOCATION REPORT

A.F.E. No. _____

Caldwell State - Hay
Caldwell - State-Hay

Date 1-6-43

Division Mich. Producing

District _____

Lease _____

Acres _____ Lease No. _____

Elevation _____

Well No. 1

(Serial No. 712)

Quadrangle CW 1/2 SW NE

Sec. 21

Twp. 18 N

Rge. 1 E

Twp. Hay

Survey _____ County Gladwin

State Michigan

Operator T. F. Caldwell, Inc.

Map Hay Twp - Gladwin Co.

Feet from North Line of Lease

660	660	"	"	East	"	"	"
510	510	"	"	South	"	"	"
		"	"	West	"	"	"

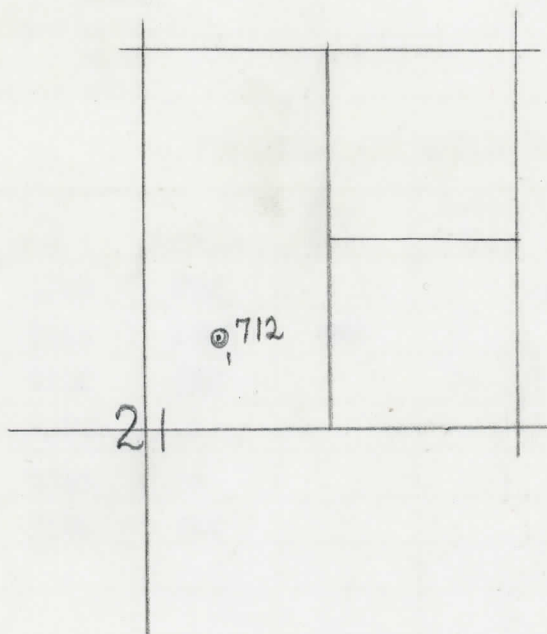
Feet from North Line of Section

660	660	"	"	East	"	"	"
510	510	"	"	South	"	1/4	"
		"	"	West	"	"	"

Loop

LEGEND

- Location
- ☀ Gas Well
- Oil Well
- ☀ Gas - Distillate Well
- or ○ Dry Hole
- Dry Showing Oil
- ☀ Dry Showing Gas
- ⊗ Abandoned Location
- ☀ or ☀ Abandoned Gas Well
- or ● Abandoned Oil Well
- or ○ Input Well



Scale _____

Remarks: _____

Submitted by N _____
 Civil Engineer

Approved by _____
 Division Manager

Approved by _____
 Vice-President - General Manager

COMPLETION RECORD OF WELLS DRILLED BY OTHER OPERATORS

Michigan Producing Division

Date June 30, 1943 No. 712
 State Mich. County Gladwin Dist. Hay Twp. Hay Sec. 21 Twp. 18 N Rge. 1 E
 Well No. 1 (Serial No.) 712 Farm Caldwell-State Hay Acres _____
 Operator T. F. Caldwell, Inc. Information secured ~~from~~ Scouting Department
 Date well started 3-17-43 Date well completed 5-29-43 Elevation 736.7

PRODUCTION RECORD

1st 24 hours natural Dry Hole
 2nd 24 hours natural _____
 Date of shot _____ No. of quarts _____ From _____ to _____ From _____ to _____
 Date of acid _____ No. of gallons _____
 1st 24 hours after acid shot _____
 2nd 24 hours after acid shot _____

FORMATION AND CASING RECORD

Formation	Top	Bottom	Top Pay	Bottom Pay	Remarks	Casing	
						Size	Set at
Marshall	1018	CTM				10"	259
Red Rock	1144	1218	CTM			8-1/4"	801
Sunbury	2230	CTM				6-5/8"	1234
Antrim	2385	"				5-3/16"	3569 SLM
Traverse Lime	2805	"					
Dundee	3564	SLM			Show oil 3633-3641. Show salt water at 3643.		
Total Depth		3654					
Plugged back:		3640					

Remarks 2662' CTM equals 2630' SLM.; 3390' CTM equals 3379' SLM; 3595' CTM equals 3569' SLM.

Signed D. C. Shackelford